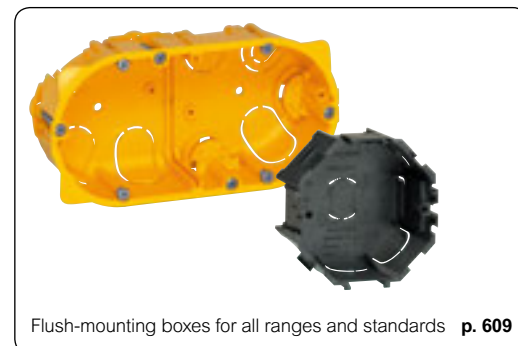
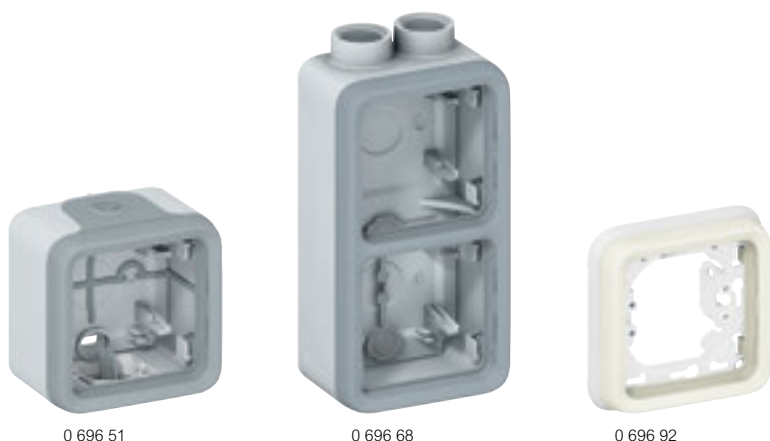


Plexo™ surface-mounting boxes and support frames IP 55



Flush-mounting boxes for all ranges and standards **p. 609**

To be equipped with modular Plexo mechanisms (p. 594-596)

Pack	Cat.Nos	Surface-mounting boxes with membrane glands
		Equipped with removable membrane glands Direct entry of cables (no need to be cut)
		1 gang - 1 entry
10	0 696 89	○ White
10	0 696 51	● Grey
10	0 707 41	○ White antimicrobial
		2 gang - 2 entries
		No separation between compartments, in order to facilitate the cabling operations and to allow the installation of pre-wired socket outlets
5	0 696 90	○ White - horizontal mounting
5	0 696 72	● Grey - horizontal mounting
1	0 707 42	○ White antimicrobial - horizontal mounting
5	0 696 91	○ White - vertical mounting
5	0 696 61	● Grey - vertical mounting
1	0 707 43	○ White antimicrobial - vertical mounting

Pack	Cat.Nos	Surface-mounting boxes for cable glands
		1 gang - 1 entry
5	0 696 56	● Grey
		2 gang - 2 entries (2 top)
5	0 696 78	● Grey - horizontal mounting
5	0 696 68	● Grey - vertical mounting

Pack	Cat.Nos	Flush-mounting support frames
		Used for flush-mounting version for German and French standard boxes only
		1 gang
		Can be equipped with claws Cat.Nos 0 849 00/01
10	0 696 92	○ White
10	0 696 81	● Grey
10	0 707 92	○ White antimicrobial
		2 gang - 2 entries
		71 mm fixing centres
5	0 696 94	○ White - horizontal mounting
5	0 696 83	● Grey - horizontal mounting
1	0 707 94	○ White antimicrobial - horizontal mounting
5	0 696 96	○ White - vertical mounting
5	0 696 85	● Grey - vertical mounting
1	0 707 49	○ White antimicrobial - vertical mounting