



EMERSON[™]
Industrial Automation

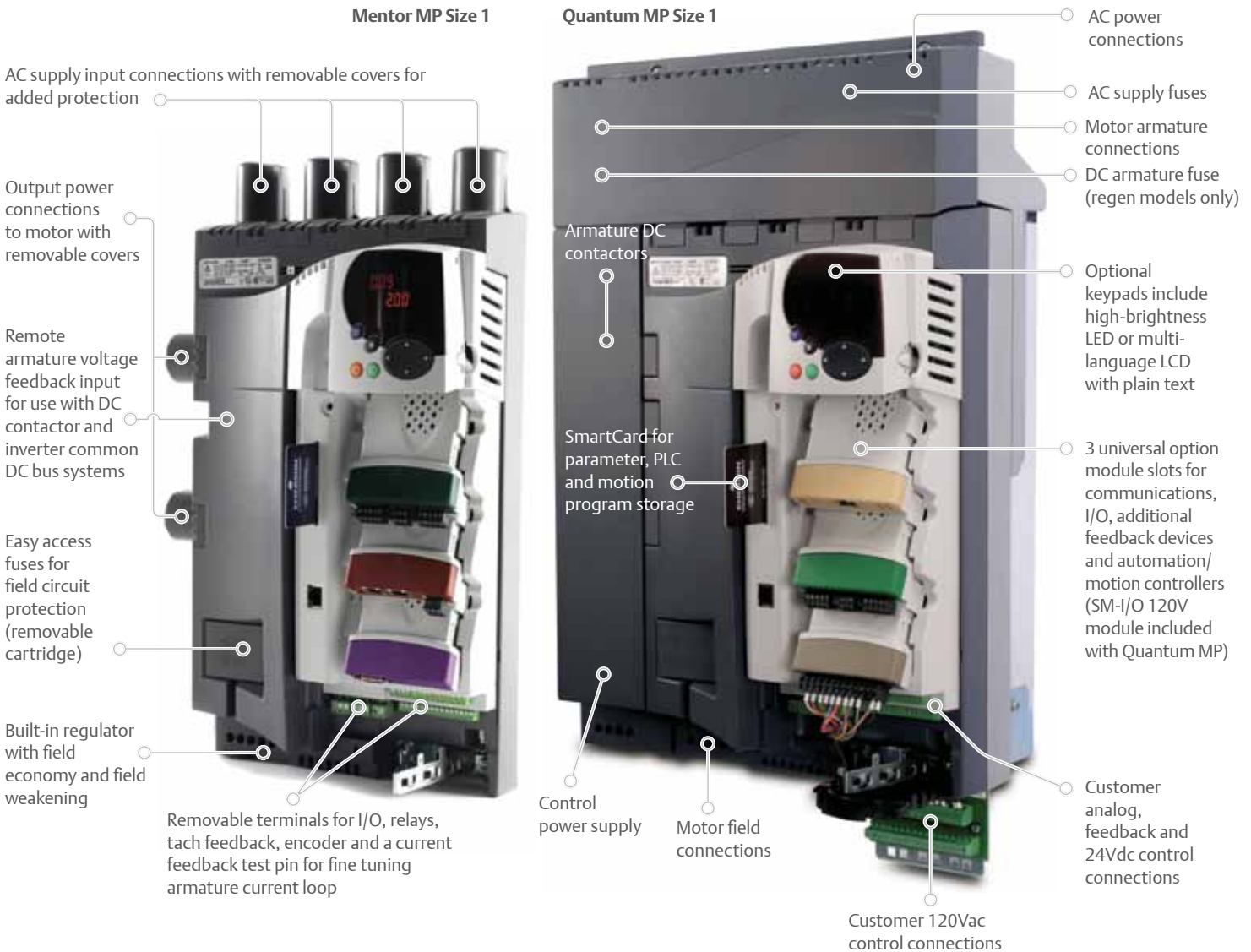
Mentor MP/ Quantum MP Flexible DC Drives

25 to 7,400A
208-230V / 380-480V / 575V / 690V



DC Drives for the 21st Century

Developed by the pioneer in DC drive technology, Control Techniques' Mentor MP and Quantum MP DC motor drives are the most advanced available, providing optimum performance and a high degree of versatile system interfacing capability.



RoHS Compliant



Flexible Drives

Solutions for New and Retrofit Applications

Mentor MP

The Mentor MP is a reliable, flexible and powerful digital DC drive designed to maximize motor performance, enhance system reliability and interface digitally with the latest control equipment using Ethernet and a wide range of industrial networks.

The Mentor MP replaces Control Techniques' Mentor II drives. Available in both regenerative and non-regenerative configurations, these 5th-generation drives deliver the reliability, power and control to increase productivity for new machines and applications in which DC motors are already installed. In addition, Mentor MP drives integrate the control platform from the world's leading intelligent AC drive, Control Techniques' Unidrive SP.

Quantum MP

The Quantum MP is a packaged Mentor MP that integrates the control functionality of the Mentor MP with a design that incorporates a DC loop contactor, high-speed input fuses, 120Vac control logic and DC output fuses (on all regenerative models). A dynamic braking contactor is also included in drives up to and including 400A models. The Quantum MP saves engineering time and panel space.

Existing Mentor II and Quantum III customers can easily migrate to the new MP platform. All Mentor MP power terminal locations and mounting points are the same as those of the Mentor II. Similarly, all Quantum MP control terminals are the same format as the Quantum III. Both drives include free software tools to assist in transferring drive parameters and programs from older products to new ones.

Control System Upgrade for New or Retrofit Applications



DC drives provide many performance advantages, especially in regenerative and high-power applications. Most DC motors in use today are easily capable of providing continued service. An MP Series drive is an ideal retrofit choice when upgrading other manufacturers' obsolete drives, with features to ensure they can integrate easily with existing motor, power supply, application equipment and communication networks.

Performance Advantage

Unparalleled Flexibility

Three expansion slots accommodate snap-in SM Option Modules for enhanced communications, I/O, additional feedback devices and automation/motion controllers (one slot on Quantum drives is dedicated to the 120Vac interface included as standard).

Maximum Reliability

Unique, patent-pending galvanic isolation technology helps protect control circuits against poor quality industrial power supplies and lightning strikes.

System Integration

Integrates with modern communication networks including Ethernet, EtherCAT and DeviceNet.

Regenerative Drives

MP Series drives are available for two- or four-quadrant (regenerative) operation.

Wide Power Range

Connect up to four MP1850 drives in parallel for high-power motor operation.

System Protection

Integrated drive and motor protection for overcurrent, overvoltage, overtemperature, phase loss, SCR junction temperature, feedback loss, field loss and armature open circuit.

Reduced Harmonics

12 or 24 pulse operation minimizes harmonics.

SmartCard for Simple Setup and Cloning

Supplied free with every DC drive, this easy-to-use memory card stores drive configuration for simple startup and parameter cloning.

Keypad Options

Choose no keypad, LED keypad or LCD keypad based on the system design and operating environment.

Multiple Feedback

Connect AC/DC tachs and incremental encoder to the base drive plus multiple additional devices with SM Option Modules.

Automation Solutions

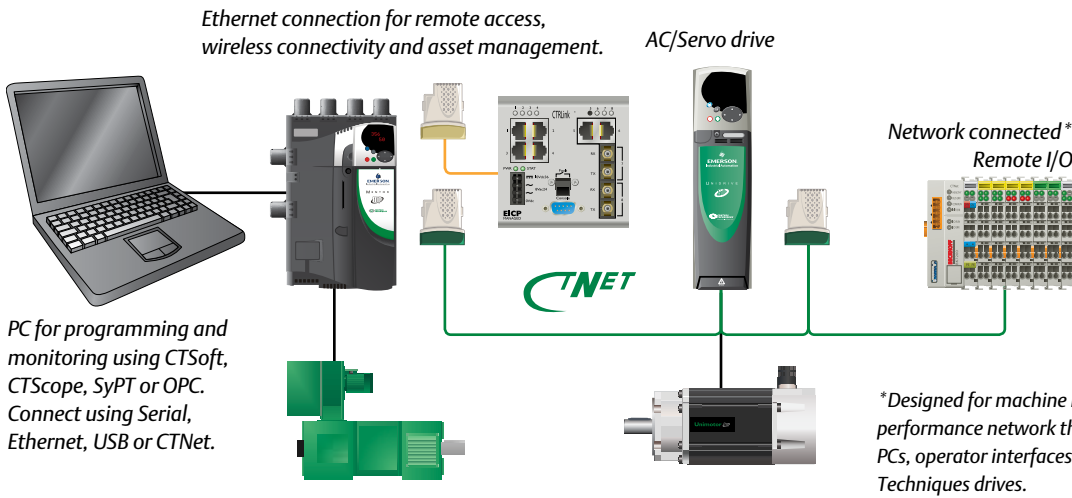
Create custom application solutions with the onboard PLC or add an SM-Applications Plus or SM-Applications Lite V2 Option Module.

Flexible Control System Integration

Machine Communication has Never Been More Flexible or Easy to Implement

MP Series drives can operate in virtually any machine networking environment. They can even serve as a gateway and support multiple communication protocols on a single network.

The SM-Applications Plus Option Module provides expanded onboard processing power and ultra-high-speed, peer-to-peer communication between MP Series DC drives and Control Techniques' AC and Servo drives.



Application Solutions

Many application solutions can be created by configuring the drive's extensive range of standard features including:

- Speed control
- Torque control
- Digital lock
- PID
- S-ramps
- Contactor control
- PLC
- Mechanical brake control



For more demanding applications, simply insert an SM-Applications Plus Option Module and use SyPTPro software to create almost limitless drive-based solutions.

Typical DC application solutions that can be performed at high-speed using the SM-Applications Plus Option Module include:

- Winders
- Hoists
- Cut-to-length
- Load sharing
- Sectional control



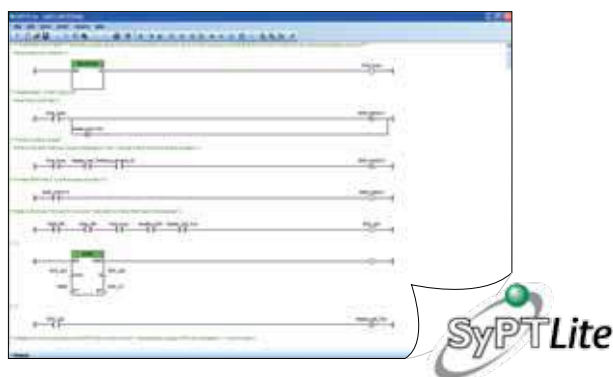
Software to Meet Your Application Needs

MP Series Automation Software

Control Techniques' FREE software suite makes it easy to access the drive's full feature set allowing the user to optimize the drive tuning, back up the configuration and set-up communications networks. The software tools can connect using Ethernet, serial ports, fieldbus, USB or CTNet, Control Techniques' drive-to-drive network.

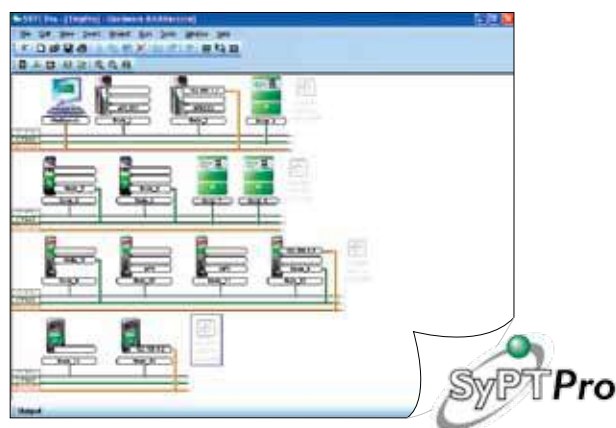
SyPTLite Onboard Automation Programming

MP Series drives have a built-in programmable controller. The controller is configured using SyPTLite, an easy-to-use Ladder Logic program editor suitable for replacing relay logic or a micro PLC for simple drive control applications.



SyPTPro Automation Development Environment

SyPTPro is a full-featured automation development environment that can be used for developing tailored solutions for single or multiple drive applications. The programming environment fully supports three IEC 61131 languages: Function Block, Ladder Logic and Structured Text. *Note: SyPTPro programs require the installation of an SM-Applications Plus or SM-Applications Lite V2 Option Module.*



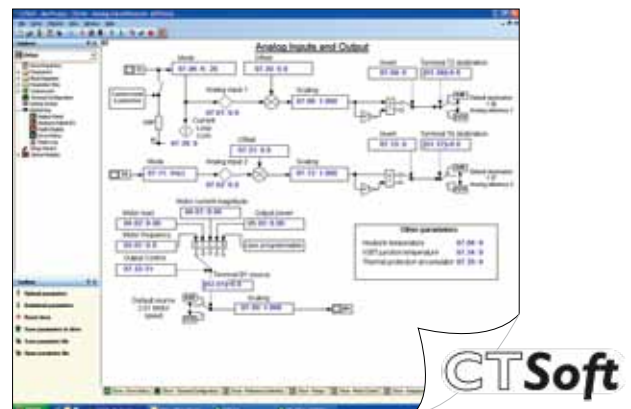
CTNet Networking

CTNet is a high-speed, deterministic drive-to-drive network linking the drives, SCADA and I/O together to form a networked system. SyPTPro manages both application programs and network communications.

CTSoft Drive Configuration

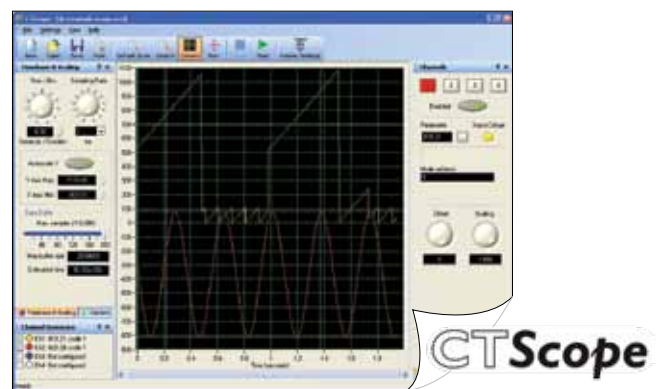
CTSoft is a drive configuration tool for commissioning, optimizing and monitoring Control Techniques drives. The software allows you to:

- Commission a drive using configuration or migration wizard
- Read, save and load drive configuration settings
- Manage data on the drive's SmartCard memory device
- Visualize/modify configuration with live animated diagrams



CTScope Digital Oscilloscope

CTScope is a full-featured software oscilloscope for viewing and analyzing changing values within the drive. The time base can be set to give high-speed capture for tuning or for longer term trends. The user interface is based on a traditional oscilloscope making it universally familiar and user-friendly to engineers worldwide.



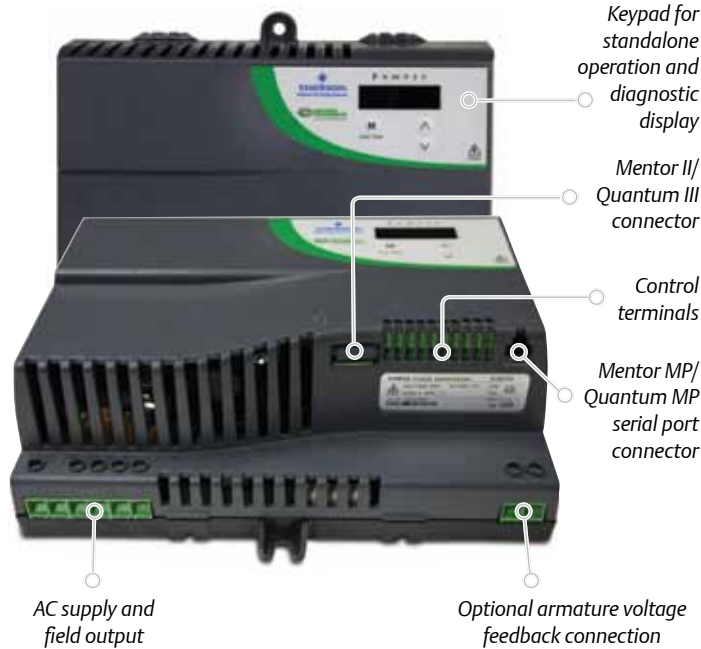
Added Functionality

Optional FXMP25 Field Controller

Using a standard RJ45 connection, MP Series drives digitally control the FXMP25 to allow setup using standard drive parameters. The FXMP25 now features an extended current range to 25A. Operating in standalone mode, the FXMP25 may be configured using its own keypad and display.

FXMP25 Features

- Digital link for field control from Mentor/Quantum MP or Mentor II/Quantum III
- Standalone digital control mode for simple applications
- Flux control for enhanced open-loop performance
- Intelligent field weakening
- Field reversal – low dynamic machine reversing using two-quadrant main stack control from Mentor MP or Quantum MP
- Mentor II/Quantum III ribbon cable connector



FREE SmartCard Memory Device



The SmartCard memory device supplied with every MP drive can be used to back up parameter sets and PLC programs and copy them from one drive to another.



Features include:

- Parameter and onboard PCL program storage
- Easy drive maintenance and commissioning
- Quick set-up for sequential build of machines
- Machine upgrades can be stored on a SmartCard and sent to the customer for installation



Options and Accessories

SM Option Modules

MP Series drives provide application and system designers with an incredibly flexible drive platform which is easily expanded with an extensive range of robust SM (“Solution Module”) Option Modules for economical, space-saving solutions. SM Option Modules install easily into any of the open option slots with no tools required. The I/O, feedback, communication and programmable modules enable MP Series drives to provide an optimized solution to meet your specific requirements.



Option	Description	Order Code
Base Drive Configuration And Programming	Cloning & Parameter Storage Card	SMARTCARD ¹
	Configuration Software	CTSOFT
	USB RS485 Comms Cable	CT-USB-CABLE
	Keypad-to-drive Cable, 5ft	SP-LCD-485-005
	Keypad-to-drive Cable, 10ft	SP-LCD-485-010
	Keypad-to-drive Cable, 15ft	SP-LCD-485-015
	Keypad-to-drive Cable, 25ft	SP-LCD-485-025
	Keypad-to-drive Cable, 50ft	SP-LCD-485-050
	Keypad-to-drive Cable, (xxx is cable length in 5-ft increments; max length 100ft)	SP-LCD-485-xxx
Operator Interface	No Keypad Option	Standard
	LED Keypad	SM-KEYPAD ²
	Backlit LCD Keypad Plus	MP-KEYPAD ²
	Programmable HMI Panels	See the Options & Accessories brochure
Power Accessories	E-Stop Duty Braking Resistor	See the Options & Accessories brochure
	External EMC Filters	See the Options & Accessories brochure
Applications Programming Software	Ladder & Function Blocks	SYPTLITE
	IEC 61131-3 (Ladder, FB, and text-based)	SYPTPRO
Programmable SM Option Modules	Systems Programming (Distributed Control) SM-Applications Plus	SM-APPS-PLUS
	Systems Programming (Centralized Control) SM-Applications Lite V2	SM-APPS-LITE-V2
	System Programming & Registration	SM-REGISTER

¹ Can be ordered separately, but comes standard with Mentor MP and Quantum MP

² These options must be ordered separately

³ Provides an additional Modbus RTU port (in addition to one on drive)

Option	Description	Order Code
Communications SM Option Modules	Modbus RTU Follower	Standard
	Modbus RTU Master	SM-APPS-PLUS ³
	Modbus RTU Master	SM-REGISTER ³
	DeviceNet	SM-DEVICENET
	PROFIBUS DP	SM-PROFIBUS-DP
	PROFINET	SM-PROFINET
	Ethernet (Modbus TCP/IP, Ethernet IP)	SM-ETHERNET
	INTERBUS-S	SM-INTERBUS
	CANopen	SM-CANOPEN
	Ethernet (EtherCAT)	SM-ETHERCAT
	CTNet, CTSync	SM-APPS-PLUS
	CTNet, CTSync	SM-REGISTER
	Feedback SM Option Modules	Universal Encoder Feedback
Incremental Encoder Input		SM-ENCODER-PLUS
Incremental Encoder Input & Output		SM-ENCODER-OUT
I/O Option Modules	Extended Analog & Digital I/O	SM-I/O-PLUS
	Extra Analog & Digital I/O	SM-I/O-LITE
	Extended Digital I/O	SM-I/O-32
	Extra I/O with Real-Time Clock/Calendar	SM-I/O-TIMER
	120/240Vac I/O	SM-I/O-120V
	Double-Insulated Extended I/O	SM-I/O-PELV
	+24Vdc Protected I/O	SM-I/O-24V
Remote Network I/O	See the Options & Accessories brochure	

Accessories

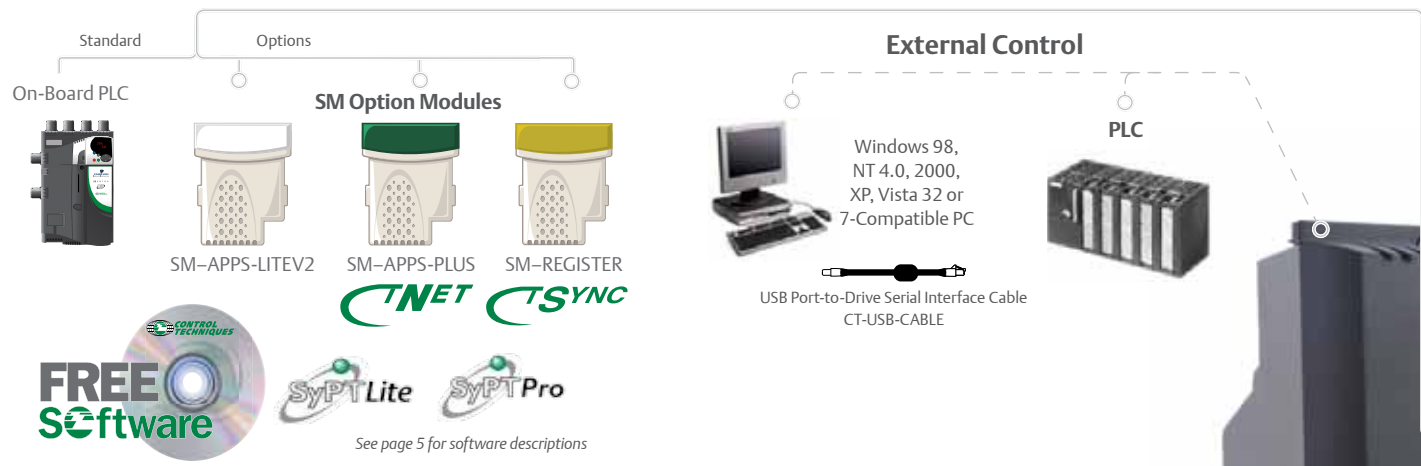
Power

- Line reactors
- EMC filters
- DC motors
- Dynamic braking resistors
- Field supply buck / boost transformers

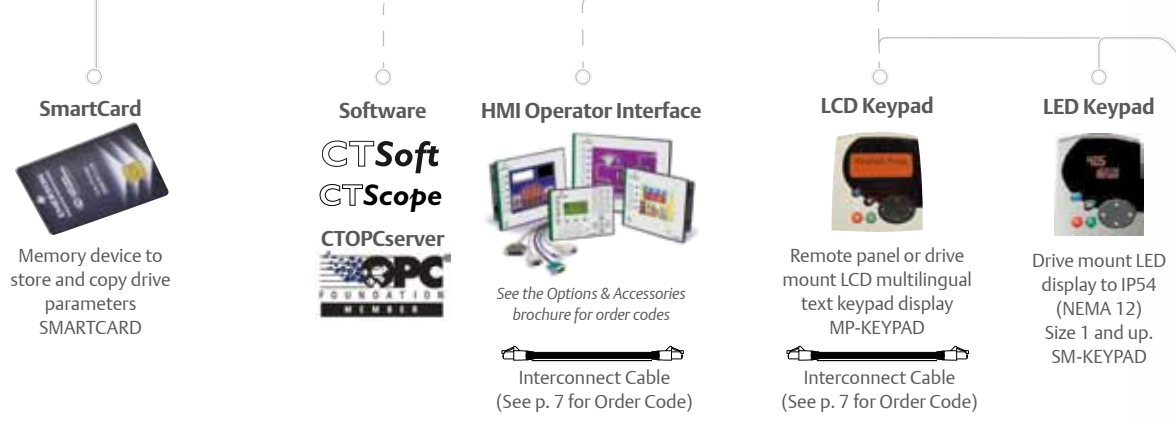


Mentor MP/Quantum MP, Fast and Easy Integration Flexibility

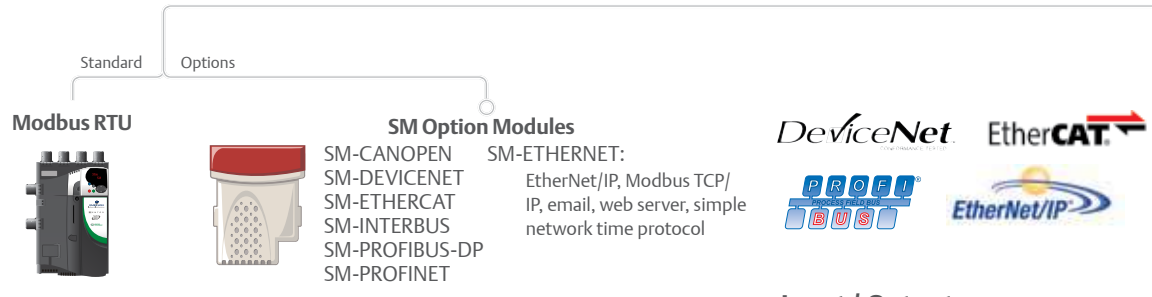
Applications with PLC or Motion Functionality



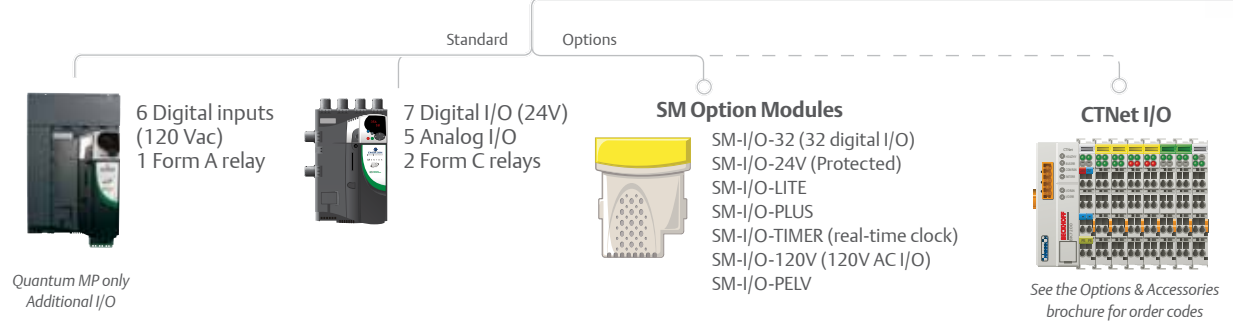
Operator Interface Options



Communications



Input / Output



Dynamic Braking Options

Field Control

Standard

Options



Integrated
Field Control
Size 1: 8A
Size 2: 20A



FXMP25
Field Control
up to 25A



Mentor MP
greater than
25A

**Dynamic Brake Resistors
E-Stop or Cyclic Duty**



See the Options & Accessories
brochure for order codes

Feedback

Standard

Options



Armature voltage
AC or DC Tach
Encoder



SM Option Modules
SM-UNI-ENCODER
SM-ENCODER-PLUS
SM-ENCODER-OUT

Motor Control Mode

Armature Voltage
Feedback



Tach
Feedback



Encoder
Feedback



**Quantum MP
Size 1**

Mentor MP Terminal Connections

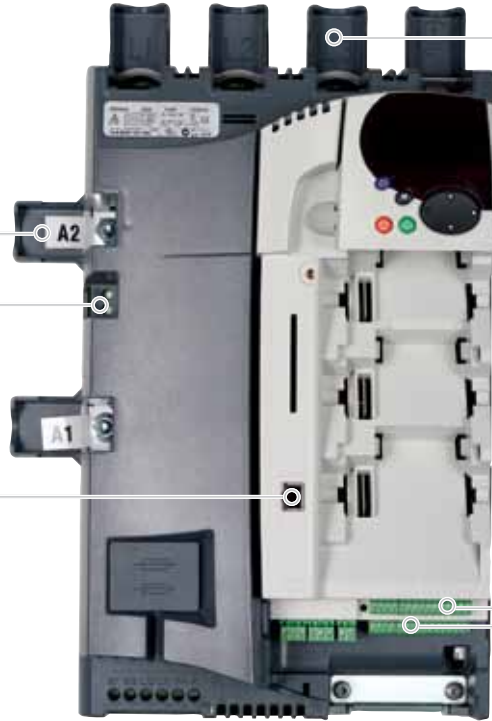
Power - Armature	
Pin #	Function
A1	Armature +
A2	Armature -

Motor Armature Voltage Feedback	
Pin #	Function
MA1	Armature +
MA2	Armature -

RS485	
Pin #	Function
1	120Ω Termination Resistor
2	RX TX
3	Isolated 0V
4	+24V (100mA)
5	Isolated 0V
6	TX Enable
7	RX\ TX\
8	RX\ TX\ (if termination resistors are required, link to pin 1)
Shell	Isolated 0V

External Field Supply RS485	
Pin #	Function
1	120Ω Termination Resistor
2	RX TX
3	Isolated 0V
4	+24V (100mA)
5	Isolated 0V
6	TX Enable
7	RX\ TX\
8	RX\ TX\ (if termination resistors are required, link to pin 1)
Shell	Isolated 0V

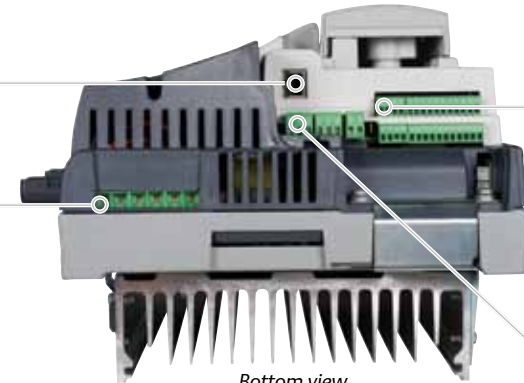
Power - Field	
Pin #	Function
E1	Control Electronics Supply
E3	Control Electronics Supply
L12	Field On/Off
L11	Field On/Off
F+	Field +
F-	Field -



Power - Line	
Pin #	Function
L1	Line In
L2	Line In
L3	Line In
	Ground Connection

Control Terminals - Top Row	
Pin #	Function
1	0V Common
2	24 Vdc External Input
3	0V Common
4	10 Vdc Source, 10mA
5	Analog Input 1 +
6	Analog Input 1 -
7	Analog Input 2
8	Analog Input 3
9	Analog Output 1
10	Analog Output 2
11	0V Common

Control Terminals - Bottom Row	
Pin #	Function
21	0V Common
22	24 Vdc Output, 200mA
23	0V Common
24	Digital I/O 1
25	Digital I/O 2
26	Digital I/O 3
27	Digital Input 4
28	Digital Input 5
29	Digital Input 6
30	0V Common
31	Drive Enable



Control Terminals - Encoder Feedback	
Pin #	Function
A	Channel A
A\	Channel A\
B	Channel B
B\	Channel B\
Z	Marker Pulse Z
Z\	Marker Pulse Z\
+	Encoder Supply
0V	Encoder 0V

Control Terminals - Relays & Tach Feedback	
Pin #	Function
51	Relay 1 Common
52	Relay 1 N/C Contact
53	Relay 1 N/O Contact
61	Relay 2 Common
62	Relay 2 N/C Contact
63	Relay 2 N/O Contact
41	Tach +
42	Tach -

Mentor MP Specifications

Environment

Ambient Operating	32 to 131 °F (0 to 55 °C) Some models are derated above 104 °F (40 °C)
Cooling Method	MP25-MP45 natural convection; MP75 and larger forced convection
Humidity	90% relative humidity at 122 °F (50 °C)
Storage Temperature	-40 to 131 °F (-40 to 55 °C)
Altitude	0 to 9,842ft (0 to 3,000m), derate 1% per 328ft (100m) between 3,280ft (1,000m) and 9,842ft (3,000m)
Enclosure	MP25-MP210: IP20; MP350 to MP900 = IP10; MP1200 and larger = IP00

AC Supply Requirements

SCR Supply Voltage	24 to 480Vac -20% +10%, MP500 to 575Vac, 500 to 690Vac ±10%, 3Ø
Frequency	45 to 65Hz
Supply Fault Current	100kA
Auxiliary Supply Voltage	208 to 480Vac ±10%, 1Ø
Armature Voltage (max.)	2-quadrant drives 1.35 X input Vac; 4-quadrant drives 1.15 X input Vac
Field Voltage (max.)	0.9 X input Vac with 1Ø input MP in field mode - 1.35 X input Vac with 3-phase input

Control

Analog Inputs	Qty 1, high precision differential voltage ± 10V, 14bit + sign Qty 2, general purpose voltage or current ± 10V, 0 to 20mA, 4 to 20mA, thermistor (analog 3 only), 10bit + sign
Analog Outputs	Qty 2, ±10V, 0 to 20 mA, 4 to 20mA, 10bit + sign
Digital I/O	Qty 3, 24Vdc inputs Qty 3, 24Vdc input/outputs
Drive Enable	Digital input 24Vdc
Relays	Qty 2, 5A@240Vac, 5A@30Vdc resistive, 0.5A@30Vdc inductive (L/R = 40ms)
Speed Loop	250µs loop update
Current Loop	35µs current sampling time
Feedback Methods	Encoder (resolution 0.01%) DC tach (resolution 0.1%); AC tach (resolution 1%) (300V max.) Armature voltage (resolution 5%) Qty 3, optional additional incremental and absolute encoders
Field Control	Current regulated with flux control MP25-MP210 8A MP350-MP1850 20A MP optional FXMP25 25A
Serial Communications	2- or 4-wire RS422 or RS485, optically-isolated Protocol is ANSI x 3.28-2.54-A4 or Modbus RTU Baud rate is 300 to 115,200

Protection and Diagnostics

Control	Patent-pending galvanic electrical isolation, 24Vdc power supply
Supply	Loss, undervoltage, overvoltage, transient suppression
Armature	Open circuit, I ² t overload, instantaneous overcurrent, semiconductor fuse (regen only)
Field	Loss, overcurrent
Motor	Motor overtemperature switch or thermistor overtemperature trips
Drive Thermal	Heatsink, SCR junction, control board and option module(s)
Current Loop Loss	Loss of analog current reference

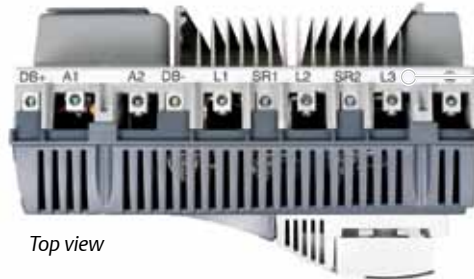
Quantum MP Terminal Connections

RS485	
Pin	Function
1	120Ω Termination Resistor
2	RX TX
3	Isolated 0V
4	+24V (100mA)
5	Isolated 0V
6	TX Enable
7	RX\ TX\
8	RX\ TX\ (if termination resistors are required, link to pin 1)
Shell	Isolated 0V

Power - Field	
Pin #	Function
E1	Control Electronics Supply
E3	Control Electronics Supply
L12	Field On/Off
L11	Field On/Off
F+	Field +
F-	Field -

Control Terminals - 120Vac		
Pin #	Function	
C1	120Vac Supply	User Output
C2	E-Stop	Input
C3	120Vac Supply	Feed from C2
C4	System Interlocks	Input
C5	120Vac Supply	User Output
C6	Digital Input1 (Stop)	Input
C7	120Vac Supply	Feed from C6
C8	Digital Input2 (Start)	Input
C9	120Vac Supply	Feed from C6
C10	Digital Input3 (Jog)	Input
C11	120Vac	User Output
C12	Digital Input4 (Fwd/Rev)	Input
C13	120Vac	User Output
C14	Digital Input5 (Reset)	Input
C15	120Vac	Relay Common
C16	Relay Output (Drive On)	Relay Output

External Field Supply RS485	
Pin #	Function
1	120Ω Termination Resistor
2	RX TX
3	Isolated 0V
4	+24V (100mA)
5	Isolated 0V
6	TX Enable
7	RX\ TX\
8	RX\ TX\ (if termination resistors are required, link to pin 1)
Shell	Isolated 0V



Top view

Power - Line & Armature	
Pin #	Function
DB+*	Dynamic Braking Resistor +
A1	Armature +
A2	Armature -
DB-*	Dynamic Braking Resistor -
L1	AC Line
SR1	Line Suppressor Resistor
L2	AC Line
SR2	Line Suppressor Resistor
L3	AC Line
GND	Ground Connection

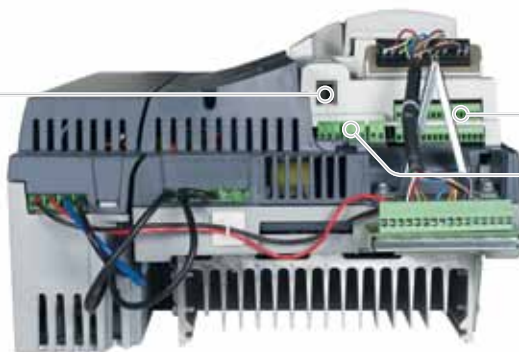


Control Terminals - Top Row	
Pin #	Function
1	0V Common
2	24 Vdc External Input
3	0V Common
4	10 Vdc Source
5	Analog Input 1 +
6	Analog Input 1 -
7	Analog Input 2
8	Analog Input 3
9	Analog Output 1
10	Analog Output 2
11	0V Common

Control Terminals - Bottom Row	
Pin #	Function
21	0V Common
22	24 Vdc Output, 200mA
23	0V Common
24	Digital I/O 1
25	Digital I/O 2
26	Digital I/O 3
27	Digital Input 4
28	Digital Input 5
29	Digital Input 6
30	0V Common
31	Drive Enable

Control Terminals - Encoder Feedback	
Pin #	Function
A	Channel A
A\	Channel A\
B	Channel B
B\	Channel B\
Z	Marker Pulse Z
Z\	Marker Pulse Z\
+	Encoder Supply
0V	Encoder 0V

*See Mentor MP terminal connections on page 10 for specific terminal location.



Bottom view

Control Terminals - Relays & Tach Feedback	
Pin #	Function
51	Relay 1 Common
52	Relay 1 N/C Contact
53	Relay 1 N/O Contact
61	Relay 2 Common
62	Relay 2 N/C Contact
63	Relay 2 N/O Contact
41	Tach +
42	Tach -

*NOTE: Dynamic braking terminals not included in models QMP550A4(R) and AMP700A4(R).

Quantum MP Specifications

Environment

Ambient Operating	32 to 131 °F (0 to 55 °C) Some models are derated above 104 °F (40 °C)
Cooling Method	QMP45 natural convection; QMP75 and larger forced convection
Humidity	90% relative humidity at 122 °F (50 °C)
Storage Temperature	-40 to 131 °F (-40 to 55 °C)
Altitude	0 to 9,842ft (0 to 3,000m), derate 1% per 328ft (100m) between 3,280ft (1,000m) and 9,842ft (3,000m)
Enclosure	IP00

AC Supply Requirements

SCR Supply Voltage	24 to 480Vac -20% +10%, 3Ø
Frequency	48 to 65Hz
Supply Fault Current	QMP45-QMP210 = 30kA; QMP350 and larger = 5kA
Auxiliary Supply Voltage	208 to 480Vac ±10%, 1Ø
Armature Voltage (max.)	2-quadrant drives 1.35 X input Vac; 4-quadrant drives 1.15 X input Vac
Field Voltage (max.)	0.9 X input Vac with 1Ø input

Control

Analog Inputs	Qty 1, high precision differential voltage ± 10V, 14bit + sign Qty 2, general purpose voltage or current ± 10V, 0 to 20mA, 4 to 20mA, thermistor (analog 3 only), 10bit + sign
Analog Outputs	Qty 2, ±10V, 0 to 20 mA, 4 to 20mA, 10bit + sign Qty 1, instantaneous armature current feedback pin, 10V = 2x motor rated current
Digital I/O	Qty 3, 24Vdc inputs Qty 3, 24Vdc input/outputs Qty 7, 120Vac Inputs
Drive Enable	Digital input 24Vdc
Relays	Qty 2, 5A@240Vac, 5A@30Vdc resistive, 0.5A@30Vdc inductive (L/R = 40ms) Qty 1, 120Vac
Speed Loop	250µs loop update
Current Loop	35µs current sampling time
Feedback Methods	Encoder (resolution 0.01%) DC tach (resolution 0.1%); AC tach (resolution 1%) (300V max.) Armature voltage (resolution 5%) Qty 3, optional additional incremental and absolute encoders
Field Control	Current regulated with flux control QMP25-QMP210 8A QMP350-QMP700 20A QMP Optional FXMP25 25A
Serial Communications	2- or 4-wire RS422 or RS485, optically-isolated Protocol is ANSI x 3.28-2.54-A4 or Modbus RTU Baud rate is 300 to 115,200

Protection and Diagnostics

Control	Patent-pending galvanic electrical isolation, 24Vdc power supply
Supply	Loss, undervoltage, overvoltage, transient suppression, semiconductor fuses
Armature	Open circuit, I ² t overload, instantaneous overcurrent, semiconductor fuse (regen only)
Field	Loss, overcurrent
Motor	Motor overtemperature switch or thermistor overtemperature trips
Drive Thermal	Heatsink, SCR junction, control board and option module(s)
Current Loop Loss	Loss of analog current reference

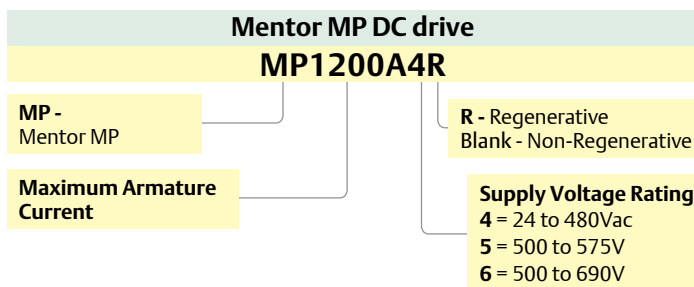
Mentor MP Ratings and Dimensions

Ratings

Model			Frame	Armature Current (A)*	Field Current (A)	Quadrants of Operation
480V	575V	690V				
MP25A4(R)	MP25A5(R)	n/a	1A	25	8	2 and 4
MP45A4(R)	MP45A5(R)			45		
MP75A4(R)	MP75A5(R)			75		
MP105A4(R)	MP105A5(R)	n/a	1B	105	8	2 and 4
MP155A4(R)	MP155A5(R)			155		
MP210A4(R)	MP210A5(R)			210		
MP350A4(R)	MP350A5(R)	MP350A6(R)	2A	350	20	2 and 4
MP420A4(R)	n/a	n/a		420		
n/a	MP470A5(R)	MP470A6(R)		470**		
MP550A4(R)	n/a	n/a		550		
MP700A4(R)	MP700A5(R)	MP700A6(R)	2B	700	20	2 and 4
MP825A4(R)	MP825A5(R)	MP825A6(R)		825**		
MP900A4(R)	n/a	n/a	2C	900	20	2
MP1200A4	MP1200A5	MP1200A6		1200		
MP1850A4	MP1850A5	MP1850A6	2D	1850	20	4
MP1200A4R	MP1200A5R	MP1200A6R		1200		
MP1850A4R	MP1850A5R	MP1850A6R		1850		

*Current ratings are at 104 °F (40 °C) with 150% overload for 30s. **For this rating at 575V and 690V, 150% overload time is 20s at 104 °F (40 °C) and 30s at 95 °F (35 °C). (R) indicates optional order code for 4-quadrant operation.

Order String¹



¹NOTE: Order strings do not include drive keypad. Refer to page 7 for keypad order codes.

Dimensions



Frame Size	Height (H)		Width (W)		Depth (D)	
	in	mm	in	mm	in	mm
1A	17.5	444	11.5	293	8.7	222
1B	17.5	444	11.5	293	9.9	251
2A	25.2	640	19.5	495	11.9	301
2B	25.2	640	19.5	495	11.9	301
2C	41.3	1050	21.9	555	24.1	611
2D	59.4	1510	21.9	555	24.1	611

All Mentor MP and Quantum MP DC drives up to 575V ratings are UL approved. These drives are the most flexible DC drive available today and incorporate the same award-winning control interface as Control Techniques' Unidrive SP AC/Servo drive.



Quantum MP Ratings and Dimensions

Ratings

Model	Frame	Armature Current (A)*	Field Current (A)	Quadrants of Operation
480V - EN / IEC; cULus				
QMP45A4(R)	1A	45	8	2 and 4
QMP75A4(R)		75		
QMP155A4(R)	1B	155	8	2 and 4
QMP210A4(R)		210		
QMP350A4(R)	2A	350	20	2 and 4
QMP400A4(R)		400		
QMP550A4(R)**		550		
QMP700A4(R)**	2B	700	20	2 and 4

* Current ratings are at 104°F (40°C) with 150% overload for 30s. (R) indicates optional order code for 4-quadrant operation.

** These models do not include dynamic braking contactors.

Dimensions



Frame Size	Height (H)		Width (W)		Depth (D)	
	in	mm	in	mm	in	mm
1A	22.6	573	13.0	330	8.7	272
1B	22.8	578	13.0	330	9.9	251
2A	35.0	889	20.3	516	13.0	330
2B	36.0	915	20.3	516	15.0	381

Order String¹

Quantum MP DC Drive
QMP700A4R

QMP - Quantum Package

R - Regenerative
Blank - Non-Regenerative

Maximum Armature Current

Supply Voltage Rating
4 = 208 to 480Vac

¹NOTE: Order strings do not include drive keypad. Refer to page 7 for keypad order codes.



The Quantum MP Size 2 package is designed for easy system integration into new or existing DC motor applications.

Driving Technology...



- Drive and Application Centers
- International Distribution Centers

Control Techniques has a network of over 500 hundred distributors in North America. Call for the distributor nearest you.

AMERICAS

Toll-free: 1-800-893-2321
info.cta@emerson.com

Headquarters
T: 952 995 8000

Service Center
T: 716 774 1193

UNITED STATES

Charlotte Application Center
T: 704 644 1000

Cleveland Drive Center
T: 216 901 2400

Detroit Application Center
T: 248 882 2652

Minneapolis Drive Center
T: 952 995 8000

Portland Drive Center
T: 503 266 2094

Providence Application Center
T: 401 392 4256

Salt Lake City Application Center
T: 801 566 5521

CANADA

Calgary Drive Center
T: 403 253 8738

Toronto Application Center
T: 905 948 3402

LATIN AMERICA & CARIBBEAN

Miami Application Center
T: 954 846 5082

São Paulo Application Center
T: +55 11 3618 6688

Mexico Application Center
T: +52 55 5809 5037

Southern Cone Application Center
T: +56 2 923 4247

For current authorized distributors or resellers, please check the Control Techniques web site.
www.controltechniques.com

DENMARK

Copenhagen Drive Center
T: +45 4369 6100
controltechniques.dk@emerson.com

FRANCE*

Angoulême Drive Center
T: +33 5 4564 5454
controltechniques.fr@emerson.com

GERMANY

Bonn Drive Center
T: +49 2242 8770
controltechniques.de@emerson.com

Chemnitz Drive Center
T: +49 3722 52030
controltechniques.de@emerson.com

Darmstadt Drive Center
T: +49 6251 17700
controltechniques.de@emerson.com

GREECE*

Athens Application Center
T: +0030 210 57 86086/088
controltechniques.gr@emerson.com

HOLLAND

Rotterdam Drive Center
T: +31 184 420555
controltechniques.nl@emerson.com

HONG KONG

Hong Kong Application Center
T: +852 2979 5271
controltechniques.hk@emerson.com

INDIA

Chennai Drive Center
T: +91 44 2496 1123/
2496 1130/2496 1083
controltechniques.in@emerson.com

Pune Application Center
T: +91 20 2612 7956/2612 8415
controltechniques.in@emerson.com

New Delhi Application Center
T: +91 11 2581 3166
controltechniques.in@emerson.com

IRELAND

Newbridge Drive Center
T: +353 45 448200
controltechniques.ie@emerson.com

ITALY

Milan Drive Center
T: +39 02575 751
controltechniques.it@emerson.com

Reggio Emilia Application Center
T: +39 02575 751
controltechniques.it@emerson.com

Vicenza Drive Center
T: +39 0444 933400
controltechniques.it@emerson.com

KOREA

Seoul Application Center
T: +82 2 3483 1605
controltechniques.kr@emerson.com

MALAYSIA

Kuala Lumpur Drive Center
T: +603 5634 9776
controltechniques.my@emerson.com

POLAND

Warsaw Application Center
T: +480220450890200
controltechniques.pl@emerson.com

REPUBLIC OF SOUTH AFRICA

Johannesburg Drive Center
T: +27 11 462 1740
controltechniques.za@emerson.com

Cape Town Application Center
T: +27 21 556 0245
controltechniques.za@emerson.com

RUSSIA

Moscow Application Center
T: +7 495 981 9811
controltechniques.ru@emerson.com

SINGAPORE

Singapore Drive Center
T: +65 6891 7600
controltechniques.sg@emerson.com

SLOVAKIA

Emerson A.S
T: +421 32 7700 369
controltechniques.sk@emerson.com

SPAIN

Barcelona Drive Center
T: +34 93 680 1661
controltechniques.es@emerson.com

Bilbao Application Center
T: +34 94 620 3646
controltechniques.es@emerson.com

Valencia Drive Center
T: +34 96 154 2900
controltechniques.es@emerson.com

*Operated by sister company, Leroy Somer®

SWEDEN*

Stockholm Application Center
T: +468 554 241 00
controltechniques.se@emerson.com

SWITZERLAND

Lausanne Application Center
T: +41 21 637 7070
controltechniques.ch@emerson.com

Zurich Drive Center
T: +41 56 201 4242
controltechniques.ch@emerson.com

TAIWAN

Taipei Application Center
T: +886 2 8161 7695
controltechniques.tw@emerson.com

THAILAND

Bangkok Drive Center
T: +66 2962 2092 99
controltechniques.th@emerson.com

TURKEY

Istanbul Drive Center
T: +90 216 4182420
controltechniques.tr@emerson.com

UAE*

Emerson FZE
T: +971 4 8118100
ct.dubai@emerson.com

UNITED KINGDOM

Telford Drive Center
T: +44 1952 213700
controltechniques.uk@emerson.com