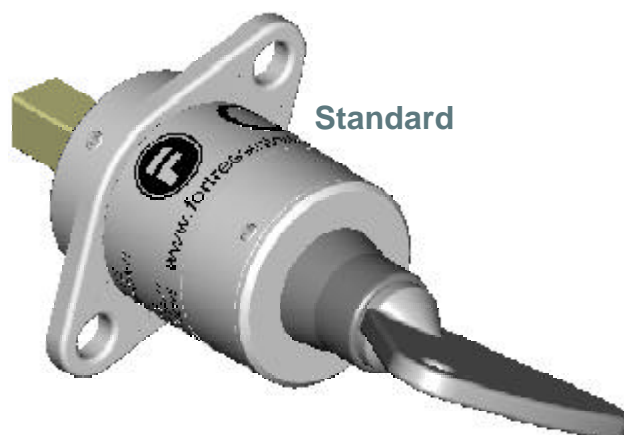


Cylinder Lock (CL)

Basic Lock & Key



Description

A robust radial disc tumbler lock, the building block of the Fortress range, offering in excess of 200,000 non-masterable combinations. A spring-loaded stainless steel dustcover is available as an optional extra.

Combinations are determined by customer defined coding details supplied at the time of ordering, giving full control over the integrity of the interlock system.

A limited number of masterable locks are available to suit certain applications.

Features & Benefits

- Ease of operation
 - Dual orientation key entry leading to easy operation.
 - Smooth and effortless rotation.
 - Standard clockwise operation to provide consistency (Anti-clockwise available upon request).
- 1,000,000 operations tested.
- All contact surfaces made of stainless steel.
- Over 200,000 lock combinations.
- Suitable for high frequency applications.
- Heavy Duty.
- High Integrity.
- Standard key can not be mastered.
- Colour coded locks and keys available to aid system operation.
- Wide temperature range -40° + 150°C.
- Master series available.

Application

As part of an interlock system the basic lock directly or indirectly isolates energy sources.

Operation

The key is inserted and turned, turning the spindle projecting from the basic lock. (With mounting bracketry the spindle can operate switchgear etc.). The key is freed in the 12 o'clock position. Standard movement is 90 Degrees clockwise and 45 and 65 degrees options are available on request.

Construction

Lock construction: Zinc alloy with a durable satin-chrome finish to the lock casing. The internal lock components are made from stainless steel. Standard spindle dimensions are 9.5mm (3/8") square x 22mm (7/8") long. Locks are 'handed', with either a left hand or right hand mounting bias.

Keys

Keys are manufactured in full Stainless Steel. Please note keys are ordered separately.

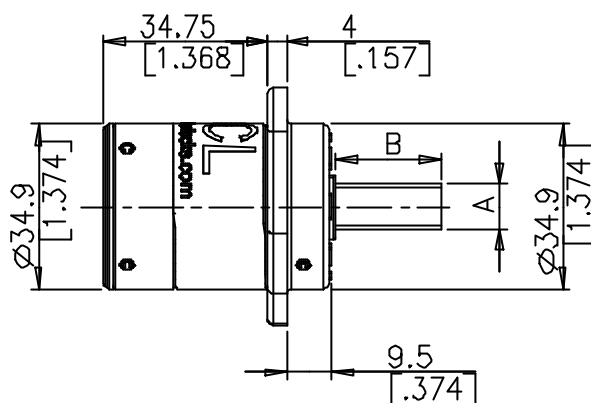
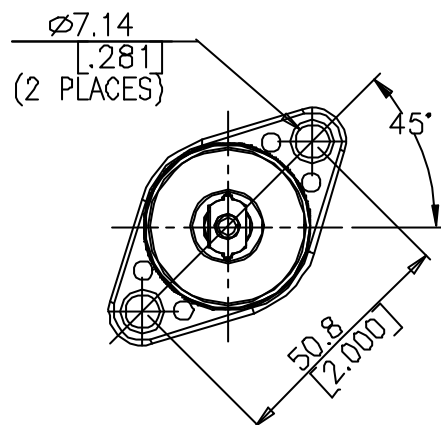
Options

- Right Hand or Left Hand
- Stainless Steel Dustcover
- Optional spindle dimensions
- Colour Coding of locks and seals
- CLS - Full stainless steel lock version
- ML - Master series lock version
- MLS - Full stainless steel lock version of ML
- Low Profile key

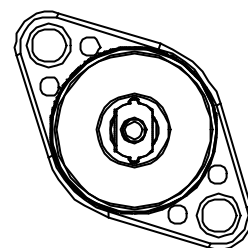


A range of Breaker Locks, specifically designed for the Switchgear industry, preventing a mains switch from being operated will be available from June 03. For more information request our Breaker Lock Data Sheets or visit our website: www.fortressinterlocks.com

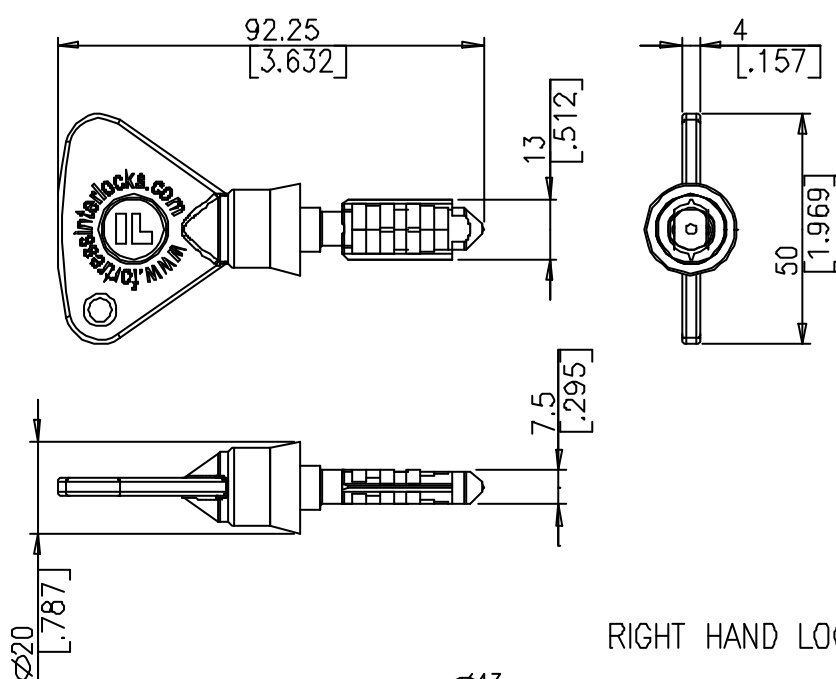
RIGHT HAND LOCK



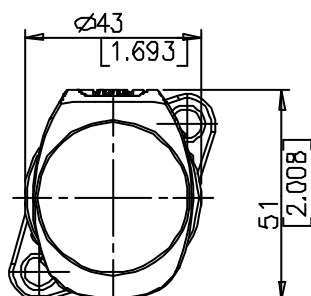
LEFT HAND LOCK



DIM	STANDARD	OPTION
A	9.5 [3/8"] SQR	Ø14.3 [9/16"] MAX
B	22.2 [7/8"]	3.5-50.8 [0.138-2"]



RIGHT HAND LOCK



LEFT HAND LOCK

