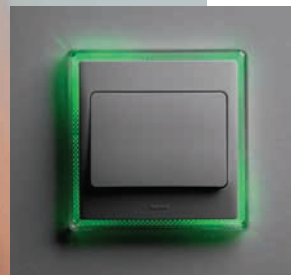


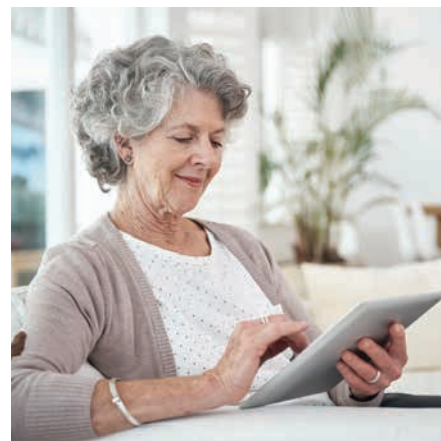
# CLIPPER

a fresh look  
for a much  
loved classic



Marrying smooth curves with a slim profile and no visible screws, Legrand's Clipper range has a simple, understated appearance.





Its larger rocker, contrast colour frames and neon surrounds make it the ideal choice for assisted living installations and to aid with Part M compliance.




## Clipper large rocker switches



Conform to BS EN 60669-1  
 Front plates : polycarbonate  
 Dimensions : 86.5 x 86.5 x 10.5 mm  
 Flush mounting back box : min. 25 mm deep


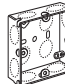
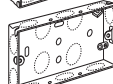
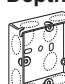
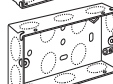
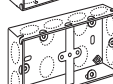
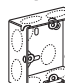
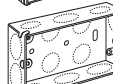
Pack	Cat. Nos.	Single pole large rocker plate switches 10 AX - 250 V~
10	2810 01	 1 gang – 2 way  1 gang – 2 way intermediate
4	2810 08	
10	2810 03	 2 gang – 2 way
10	2810 05	 3 gang – 2 way

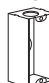

Pack	Cat. Nos.	Single pole large rocker push switch 10 AX - 250 V~
10	2810 41	 1 gang – 2 way push switch

Pack	Cat. Nos.	Accessories
1	2819 08	 Silver surround frame
1	1200	 Neon surround frame

## flush mounting steel back boxes



Pack	Cat. Nos.	Flush mounting back boxes
		Conform to BS 4662 Material : galvanised steel Top, side and back knockout entries according to type of box
		<b>Depth 16 mm</b>
100	0891 09	 1 gang with 1 fixed lug, 1 adjustable lug and 1 earth terminal
		<b>Depth 25 mm</b>
50	0891 10	 1 gang with 3 fixed lugs, 1 adjustable lug and 1 earth terminal
10	0891 11	 2 gang with 1 fixed lug, 1 adjustable lug and 1 earth terminal
		<b>Depth 35 mm</b>
50	0891 13	 1 gang with 3 fixed lugs, 1 adjustable lug and 1 earth terminal
40	0891 14	 2 gang with 1 fixed lug, 1 adjustable lug and 1 earth terminal
40	0891 40	 Dual box with 2 earth terminals Accepts 2 single gang accessories
		<b>Depth 48 mm</b>
25	0891 17	 1 gang with 3 fixed lugs, 1 adjustable lug and 1 earth terminal
20	0891 18	 2 gang with 1 fixed lug, 1 adjustable lug and 1 earth terminal

Pack	Cat. Nos.	Architrave back boxes
		<b>Depth 26 mm</b>
5	7364 40	 Dimensions : 82 x 28 mm
5	7364 41	 Dimensions : 142 x 28 mm

Download the full file at

<http://assets.kempstoncontrols.com/doc/Wiring%20Accessories%20Product%20Guide.pdf>



**KEMPSTON**  
CONTROLS