

N20 BS88 Special tag fuse links

Product description

Eaton's Bussmann® series N20 British Standard fuse links are specifically designed for the protection of general industrial applications e.g. power distribution and cable protection.

Standard features

- Good peak let-through current limitation
- 1:1:6 Selective coordination ratio between "minor" and "major" fuse
- gG characteristics for cable protection and general purpose applications
- Power loss values well within the limits of IEC 60269-2



Powering Business Worldwide

Catalogue Symbol:

- (amps)N20

Technical data:

- Rated voltage: 690 V a.c. / 400 V d.c.
- Rated current: 125 to 315 A
- Breaking capacity: 80 kA a.c. / 40 kA d.c.
- Breaking range and utilisation category: gG

Standards/Approvals:

- BS88-1
- IEC 60269-1
- RoHS compliant

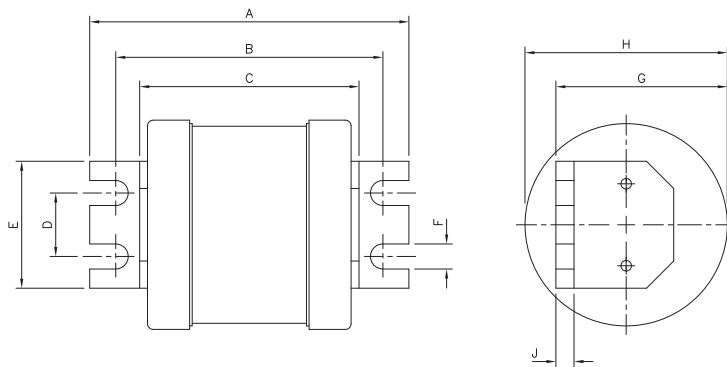
Packaging:

- MOQ: 1

Table 1. Technical Data

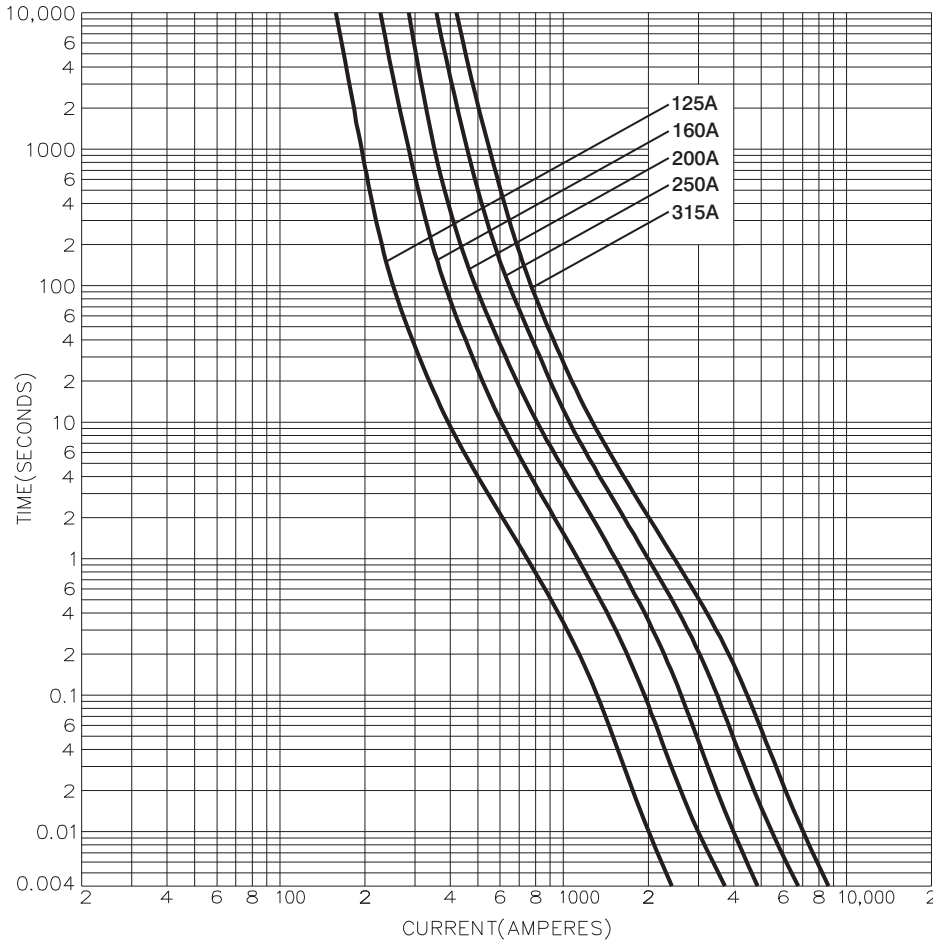
Part number	Rated voltage	Rated current (Amps)	Energy integrals I ² t (A ² S)				Watts loss W	Product Class
			Pre-arcing	Total at 415V	Total at 550V	Total at 660V		
125N20	690 V a.c. / 400 V d.c.	125	30,000	52,000	75,000	150,000	12	gG
160N20	690 V a.c. / 400 V d.c.	160	67,000	120,000	170,000	335,000	13	gG
200N20	690 V a.c. / 400 V d.c.	200	120,000	210,000	300,000	590,000	15	gG
250N20	690 V a.c. / 400 V d.c.	250	220,000	390,000	550,000	1,100,000	19	gG
315N20	690 V a.c. / 400 V d.c.	315	340,000	600,000	870,000	1,700,000	25	gG

Dimensions - mm



Catalogue numbers	A	B	C	D	E	F	G	H	J
125-315N20	110	93	75	22	45	9	49	49	6

Time current curve



Changes to the products, to the information contained in this document, and to prices are reserved; so are errors and omissions. Only order confirmations and technical documentation by Eaton is binding. Photos and pictures also do not warrant a specific layout or functionality. Their use in whatever form is subject to prior approval by Eaton. The same applies to Trademarks (especially Eaton, Moeller, and Cutler-Hammer). The Terms and Conditions of Eaton apply, as referenced on Eaton Internet pages and Eaton order confirmations.

Eaton
 EMEA Headquarters
 Route de la Longeraie 7
 1110 Morges, Switzerland

Eaton Electrical Products Limited
 Melton Road
 Burton-on-the-Wolds
 Leicestershire, LE12 5TH
 United Kingdom

© 2017 Eaton
 All Rights Reserved
 PDF Only
 Publication No. 4166
 October 2017