

# Retroreflective sensor RLK39-54-Z/31/40a/116

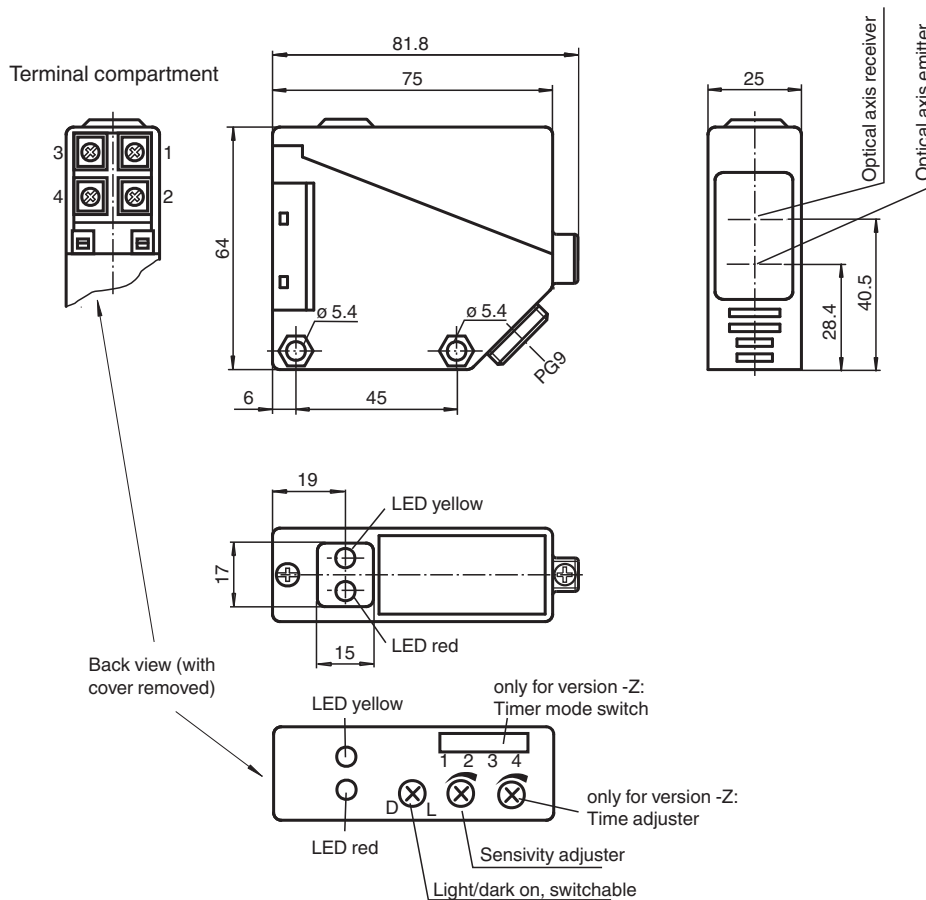


- Glare protected with polarization filter
- Visible red light
- Light-on/dark-on, switchable
- Timer function
- Degree of protection IP67

Retroreflective sensor for standard applications, polarization filter, detection range 7 m, red light, timer function, sensitivity adjuster, light/dark on, relay contact output, terminal compartment



## Dimensions



Release date: 2020-12-10 Date of issue: 2020-12-10 Filename: 088823\_eng.pdf

Refer to "General Notes Relating to Pepperl+Fuchs Product Information".

Pepperl+Fuchs Group  
www.pepperl-fuchs.com

USA: +1 330 486 0001  
fa-info@us.pepperl-fuchs.com

Germany: +49 621 776 1111  
fa-info@de.pepperl-fuchs.com

Singapore: +65 6779 9091  
fa-info@sg.pepperl-fuchs.com

**PF** PEPPERL+FUCHS

## Technical Data

General specifications		
Effective detection range		0 ... 5 m
Reflector distance		0.1 ... 5 m
Threshold detection range		6 m
Reference target		H50 reflector
Light source		LED red
Light type		modulated visible red light
Polarization filter		yes
Ambient light limit		IEC / EN 60947-5-2 , 10000 Lux
Functional safety related parameters		
MTTF <sub>d</sub>		803 a
Mission Time (T <sub>M</sub> )		20 a
Diagnostic Coverage (DC)		0 %
Indicators/operating means		
Function indicator		LED yellow: switching state LED red: pre-fault indication
Control elements		Sensing range adjuster, light-on/dark-on changeover switch
Control elements		switch for timer function
Electrical specifications		
Operating voltage	U <sub>B</sub>	12 ... 240 V DC 24 ... 240 V AC (50 ... 60 Hz)
Ripple		10 %
No-load supply current	I <sub>0</sub>	≤ 50 mA
Protection class		II, rated voltage ≤ 250 V AC with pollution degree 1-2 according to IEC 60664-1 Caution! The protection class 2 is only valid when the terminal compartment is closed. output circuit has basic insulation to control circuit according to IEC/EN 61140
Power consumption	P <sub>0</sub>	≤ 3 VA
Time delay before availability	t <sub>v</sub>	≤ 300 ms
Output		
Switching type		light/dark on
Signal output		1 relay output
Switching voltage		max. 240 V AC ; 150 V DC
Switching current		max. 3 A
Switching power		DC: max. 90 W AC: max. 750 VA
Switching frequency	f	≤ 25 Hz
Response time		≤ 20 ms
Timer function		On-/off-delay or pulse extension on choice
Conformity		
Product standard		EN 60947-5-2
Approvals and certificates		
EAC conformity		TR CU 020/2011 TR CU 004/2011
CCC approval		Certified by China Compulsory Certification (CCC)
Approvals		CE
Ambient conditions		
Ambient temperature		-25 ... 55 °C (-13 ... 131 °F)
Storage temperature		-40 ... 70 °C (-40 ... 158 °F)
Mechanical specifications		
Housing width		25 mm
Housing height		64 mm
Housing depth		75 mm
Degree of protection		IP67
Connection		terminal compartment PG9, ≤ 2.5 mm <sup>2</sup>
Material		

Release date: 2020-12-10 Date of issue: 2020-12-10 Filename: 088823\_eng.pdf

Refer to "General Notes Relating to Pepperl+Fuchs Product Information".

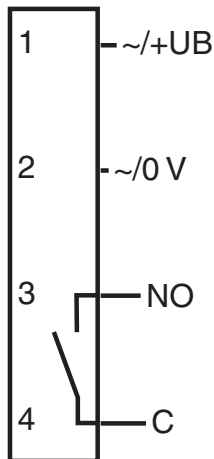
Pepperl+Fuchs Group  
www.pepperl-fuchs.comUSA: +1 330 486 0001  
fa-info@us.pepperl-fuchs.comGermany: +49 621 776 1111  
fa-info@de.pepperl-fuchs.comSingapore: +65 6779 9091  
fa-info@sg.pepperl-fuchs.com

**PEPPERL+FUCHS**

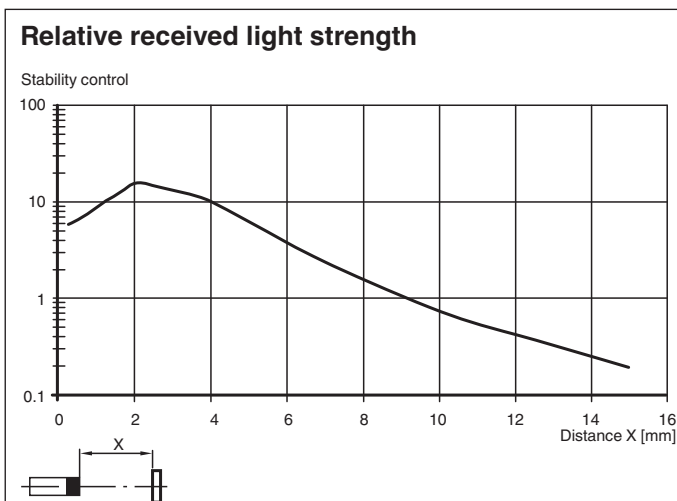
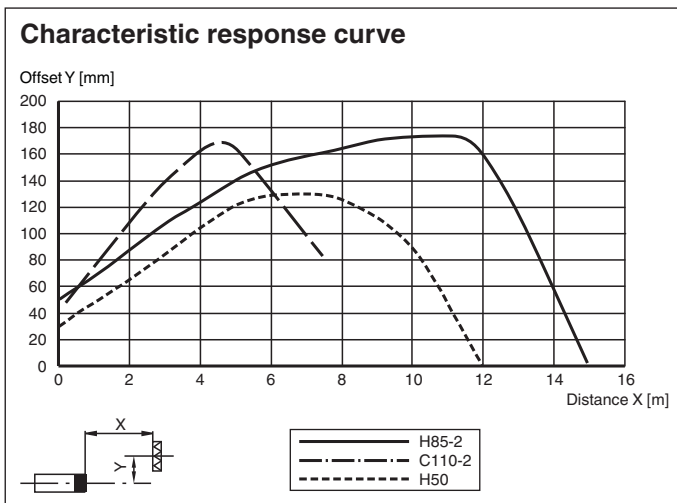
### Technical Data

Housing	PBT
Optical face	PMMA
Mass	approx. 110 g
<b>General information</b>	
Scope of delivery	Mounting aid , Reflector

### Connection Assignment



### Characteristic Curve



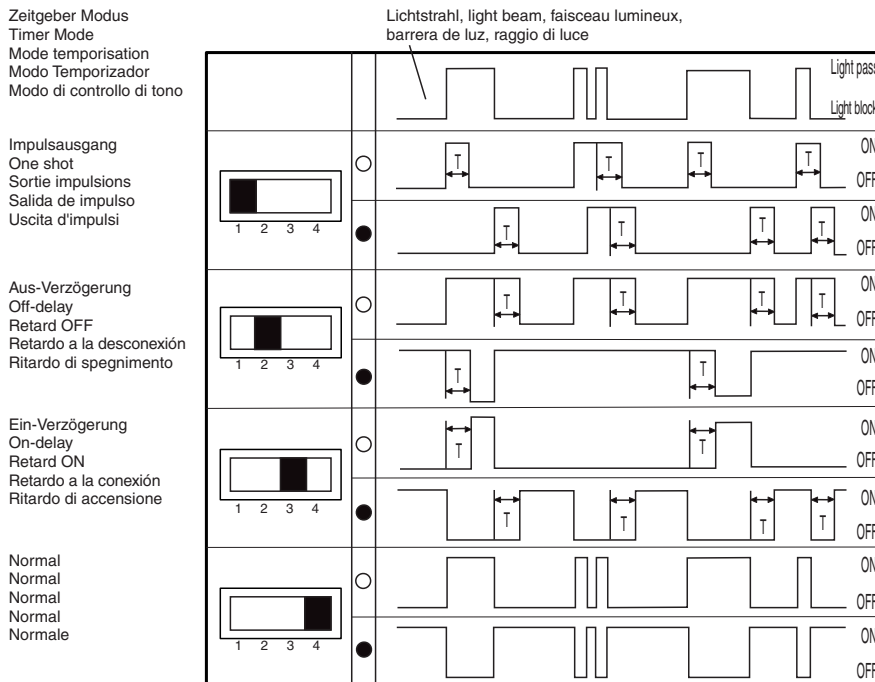
Release date: 2020-12-10 Date of issue: 2020-12-10 Filename: 088823\_eng.pdf

Refer to "General Notes Relating to Pepperl+Fuchs Product Information".

# Mounting

## Timerfunktion Fonction de temporisation Funzione timer

## Timer function Función del timer

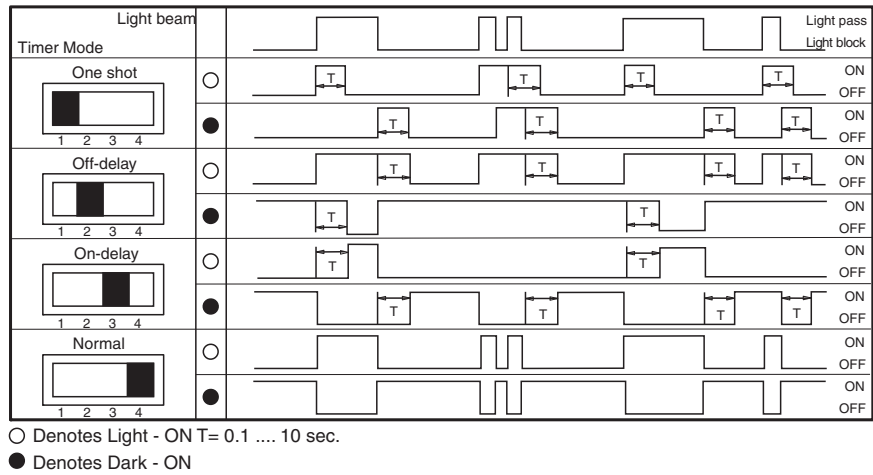


# Accessories

	<b>OMH-RL39</b>	Mounting bracket for RL39 series Sensors
--	-----------------	--

Release date: 2020-12-10 Date of issue: 2020-12-10 Filename: 088823\_eng.pdf

**Configuration**



**Accessories**

Other suitable accessories can be found at [www.pepperl-fuchs.com](http://www.pepperl-fuchs.com)

Release date: 2020-12-10 Date of issue: 2020-12-10 Filename: 088823\_eng.pdf