



A selection of keys is available to suit a range of applications, from the basic nickel plated key to the stainless steel sealing key. The F range of keys fit the figure style lock portion whilst the Q range fits the Q style lock portion.

FKW6-S

Operation

Two different types of keys are available: F range for figure style and Q range for Q style lock portions:



F keys (Figure style)

- Stainless steel, brass and plated range of keys
- Customised coding
- **SYMBOL (CODE) TO BE ADVISED WHEN ORDERING**
 - select up to 3 characters
 - any alpha- (A-Z) and numeric (0-9) configurations
 - do not use letter O, use Zero instead
 - do not use lower case
 - for spacing as a character advise TABLET (submaster key)*
- 47,988 code options available
- Master and submaster keys available*



Q keys (Q style)

- Stainless steel, brass and plated range of keys
- Customised coding
- **SYMBOL (CODE) TO BE ADVISED WHEN ORDERING**
 - select up to 6 characters
 - any alpha- (A-Z) and numeric (0-9) configurations
 - additional, non alphanumeric characters available: (*), (/), (-) and ()
 - do not use letter O, use Zero instead
 - do not use lower case
- over 3,6 billion code options available
- Recorded in internal data base to avoid duplications

***The disclaimer on page 2 applies when ordering master, submaster and spare keys**

Disclaimer

IMPORTANT:

We must draw your attention to the potential danger of issuing spare, master or submaster keys.



Trapped key interlocks control procedural events in a strict sequence. If this sequence is altered, through the use of spare or master keys, the integrity of your safety system may be compromised, possibly resulting in serious or even fatal injury to persons or damage to processes and plant.

In the wrong hands, spare or master keys could expose person(s) to the very hazard from which the interlocking system is intended to protect them.

Technical Data

Temperature rating	Minimum: -40°C [-40°F] ice free for Q & F Type
	Maximum: 107°C [224,6°F] for Q Type/140°C [284°F] for F Type
Type of mounting	M6
Weight	0,1 kg
Material	Stainless steel/brass /nickel plated/chrome plated/nylon coated

EC-Declaration

We, the manufacturers, declare that the components, detailed herein and placed on the market, comply with all the essential health and safety requirements applying to them.

Empowered signatory:

Mr T.C. Whelan
Managing Director



F Keys



FK4-NI /
FK4-MASTER



FKW6-S /
FKW6-S-MASTER



FKW6-NI



FKW3-RED



KSD-R



CL1062



006512



SHORT KEY /
SHORT KEY-ENG BOTHSIDE

Order Information/ Part Number

Description

FK4-NI	FK4 NICKEL PLATED KEY
FK4-MASTER	FK4 MASTER KEY
FKW6-S	FKW6 STAINLESS STEEL SEALING KEY
FKW6-S-MASTER	FKW6 STAINLESS STEEL MASTER KEY
FKW6-NI	FKW6 NICKEL PLATED SEALING KEY
FKW3-RED	FKW3 T HANDLE SEALING KEY RED NYLON COATED
KSD-R	SWITCH DISCONNECTOR KEY
006512	SALVO KEY - FKW6-S KEY COMPLETE WITH ID TAG
CL1062	MERLIN GERIN KEY SK20165 MASTER PACT RANGE
SHORT KEY	SCHNEIDER AND ABB SWITCHGEAR APPLICATIONS KEY, NICKEL PLATED

Special keys available upon enquiry

The disclaimer on page 2 applies when ordering master, submaster and spare keys

Q Keys



QS-S



QS-B



QS-NI

Order Information/ Part Number

Description

QS-S	QS KEY - STAINLESS STEEL
QS-B	QS PLAIN BRASS Q KEY
QS-NI	QS KEY - NICKEL PLATED

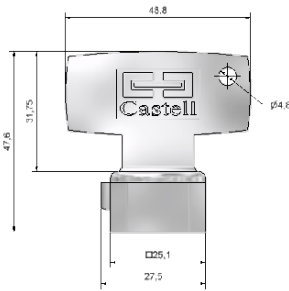
Special keys available upon enquiry

The disclaimer on page 2 applies when ordering spare keys

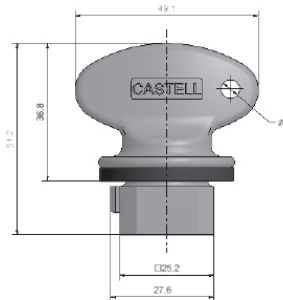
Drawings

F Keys

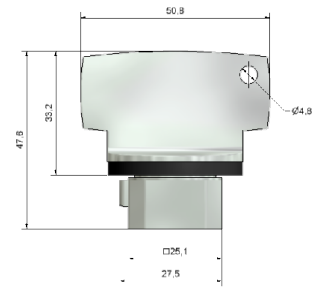
Dimensions:
in mm



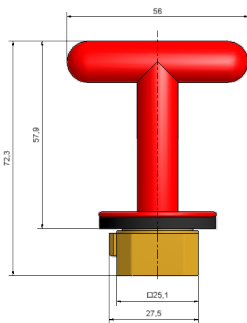
FK4-NI / FK4-MASTER



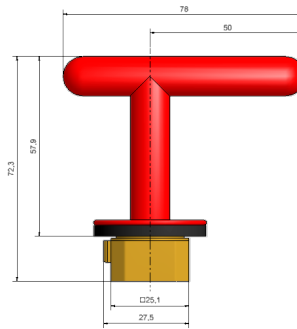
FKW6-S / FKW6-S-MASTER



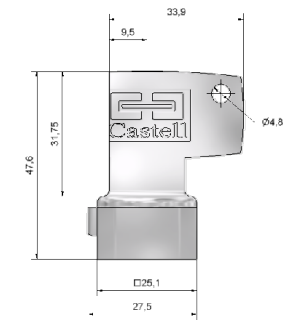
FKW6-NI



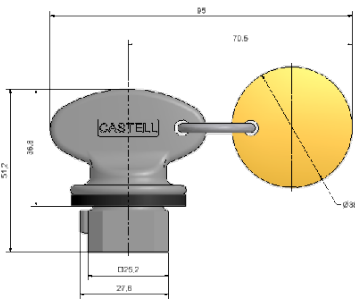
FKW3-RED



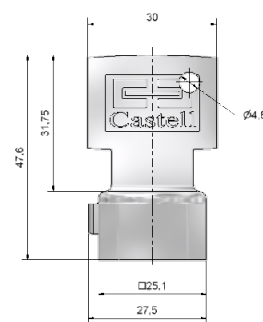
KSD-R



CL1062



006512

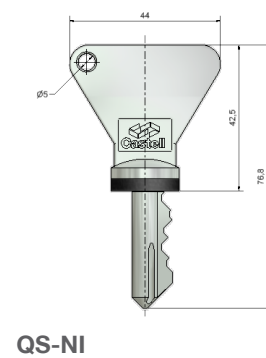
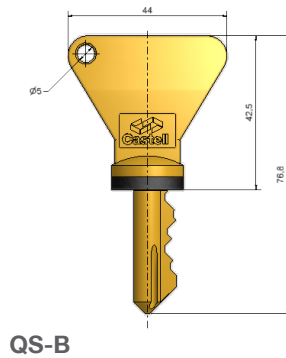
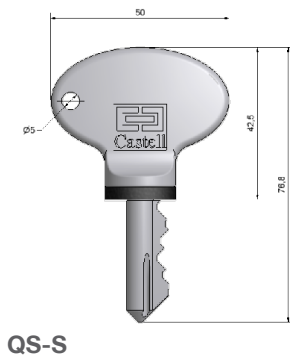


SHORT KEY

Drawings

Q Keys

Dimensions:
in mm



Contact Information

Castell Safety International Ltd.
The Castell Building
217 Kingsbury Road
London, England NW9 9PQ

t: +44 (0) 20 8200 1200
f: +44 (0) 20 8905 9378
e: uksales@castell.com

Castell Safety International Ltd.
Oskar-Jäger-Strasse 137
50825 Köln
Germany

t: +49 (0) 221 1694 794
f: +49 (0) 221 1694 795
e: vertrieb@castell.com

Castell Interlocks Inc.
Suite 800
150 N Michigan Avenue,
Chicago, Illinois 60601
USA

t: +1.312.360.1516
f: +1.312.268.5174
e: ussales@castell.com

Castell Safety China
Building 1, No. 123,
Lane 1165, Jindu Road,
Minhang District,
Shanghai 201108, China.

t: +86 21 61519023
f: +86 21 61519030
e: chinasales@castell.com

While every effort has been made to ensure the accuracy of the information provided, no liability can be taken for any errors or omission.
Castell Safety International Limited reserves the right to alter specifications and introduce improvements without prior notice.