

distribution blocks 125 to 400 A

four pole



0374 00



0373 08

Extra-flat distribution blocks for lugs

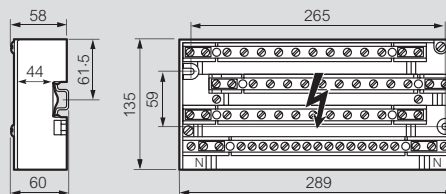
Pack	Cat. Nos.	Extra-flat distribution blocks for lugs									
1	0374 47	<p>125 A screw type (60 mm depth) Ipk peak withstand current 25 kA Insulation voltage according to EN 60947-1/ IEC 60664-1 : 500 V Self-extinguishing : 960 °C</p> <p>Fix to \perp (15 mm high) or by M6 screws Four bars each equipped with :</p> <table border="1"> <tr> <td>Incoming</td> <td>Phase outgoing</td> <td>Neutral outgoing</td> <td rowspan="2">No. of 17.5 mm modules</td> </tr> <tr> <td>1 x 35 mm²</td> <td>10 x 16 mm² M5 screw</td> <td>17 x 16 mm² M5 screw</td> <td>16</td> </tr> </table> <p>Clamp connection possible using connector Cat. No. 0373 65 (p. 45)</p>	Incoming	Phase outgoing	Neutral outgoing	No. of 17.5 mm modules	1 x 35 mm ²	10 x 16 mm ² M5 screw	17 x 16 mm ² M5 screw	16	
Incoming	Phase outgoing	Neutral outgoing	No. of 17.5 mm modules								
1 x 35 mm ²	10 x 16 mm ² M5 screw	17 x 16 mm ² M5 screw		16							
1	0374 00	<p>250 A (75.5 mm depth) Ipk peak withstand current 60 kA Insulation voltage according to EN 60947-1/ IEC 60664-1 : 1 000 V Self-extinguishing : 960 °C</p> <p>Fix to mounting plate by M6 screws Four bars each equipped with :</p> <table border="1"> <tr> <td>Incoming</td> <td>either</td> <td>Outgoing</td> </tr> <tr> <td>150 mm²</td> <td></td> <td>1 x 70 mm² or 1 x 50 mm² plus 1 x 35 mm² or 2 x 35 mm²</td> </tr> <tr> <td></td> <td>or</td> <td>1 connector Cat. No. 0374 03</td> </tr> </table>	Incoming	either	Outgoing	150 mm ²		1 x 70 mm ² or 1 x 50 mm ² plus 1 x 35 mm ² or 2 x 35 mm ²		or	1 connector Cat. No. 0374 03
Incoming	either	Outgoing									
150 mm ²		1 x 70 mm ² or 1 x 50 mm ² plus 1 x 35 mm ² or 2 x 35 mm ²									
	or	1 connector Cat. No. 0374 03									
10	0374 03	<p>Connector for Cat. No. 0374 00 converts outgoing terminal to :</p> <ul style="list-style-type: none"> • 1 x 1.5 to 6 mm² Ø 5.3 mm • 2 x 6 to 16 mm² Ø 7.5 mm <p>Dimensions : 29 x 29 x 16.8 mm</p>									

Stepped distribution blocks for lugs

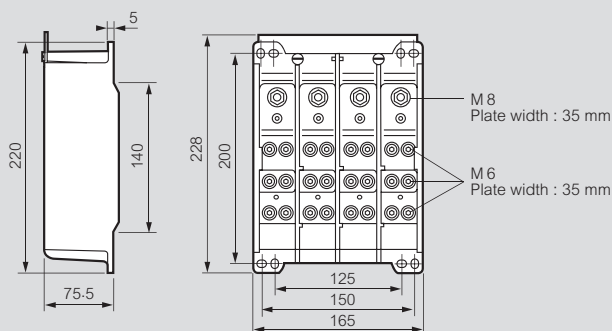
1	0373 95	<p>With front insulation sheet</p> <p>125 A (77 mm depth) Fix to \perp (15 mm high) or by M4 screws Four 12 x 4 mm bars each equipped with : • Five 2 x 10 mm² claw connectors per bar (not mounted)</p>				
1	0374 30	<p>125 A (125 mm depth) Fix to mounting plate by M6 screws Four 15 x 4 mm bars each equipped with :</p> <table border="1"> <tr> <td>Incoming</td> <td>Outgoing</td> </tr> <tr> <td>1 x 35 mm² - M8 screw</td> <td>5 x 25 mm² - M6 screw</td> </tr> </table>	Incoming	Outgoing	1 x 35 mm ² - M8 screw	5 x 25 mm ² - M6 screw
Incoming	Outgoing					
1 x 35 mm ² - M8 screw	5 x 25 mm ² - M6 screw					
1	0374 31	<p>160 A (125 mm depth) Fix to mounting plate by M6 screws Four 18 x 4 mm bars each equipped with :</p> <table border="1"> <tr> <td>Incoming</td> <td>Outgoing</td> </tr> <tr> <td>1 x 70 mm² - M8 screw</td> <td>5 x 35 mm² - M6 screw</td> </tr> </table>	Incoming	Outgoing	1 x 70 mm ² - M8 screw	5 x 35 mm ² - M6 screw
Incoming	Outgoing					
1 x 70 mm ² - M8 screw	5 x 35 mm ² - M6 screw					
1	0374 35	<p>250 A (155 mm depth) Fix to mounting plate by M6 screws Four 25 x 4 mm bars each equipped with :</p> <table border="1"> <tr> <td>Incoming</td> <td>Outgoing</td> </tr> <tr> <td>1 x 120 mm² - M10 screw</td> <td>5 x 50 mm² - M8 screw</td> </tr> </table>	Incoming	Outgoing	1 x 120 mm ² - M10 screw	5 x 50 mm ² - M8 screw
Incoming	Outgoing					
1 x 120 mm ² - M10 screw	5 x 50 mm ² - M8 screw					
1	0373 08	<p>400 A (107 mm depth) Four 32 x 5 mm bars equipped with :</p> <table border="1"> <tr> <td>Incoming</td> <td>Outgoing</td> </tr> <tr> <td>2 x Ø8.5 mm holes for bar/flexible bar</td> <td>21 x M6 holes for 70 mm² max cable lugs</td> </tr> </table>	Incoming	Outgoing	2 x Ø8.5 mm holes for bar/flexible bar	21 x M6 holes for 70 mm ² max cable lugs
Incoming	Outgoing					
2 x Ø8.5 mm holes for bar/flexible bar	21 x M6 holes for 70 mm ² max cable lugs					

Extra-flat distribution blocks for lugs

125 A Cat. No. 0374 47

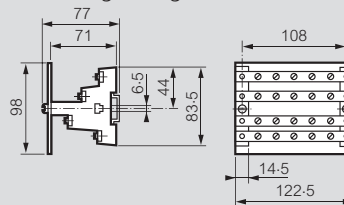


250 A Cat. No. 0374 00

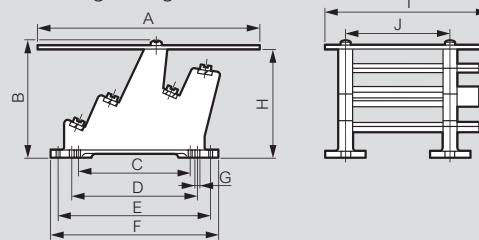


Stepped distribution blocks for lugs

125 A Cat. No. 0373 95 - Ipk peak withstand current 20 kA
Insulation voltage according to EN 60947-1/IEC 60664-1 : 600 V
Self-extinguishing : 850 °C



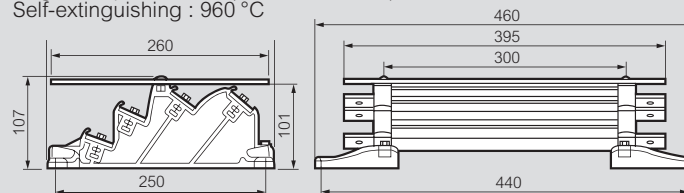
125/160/250 A Cat. Nos. 0374 30/31/35 - Ipk peak withstand current 35 kA
Insulation voltage according to EN 60947-1/IEC 60664-1 : 1 000 V
Impulse (surge) voltage (Uimp) : 12 kV
Degree of pollution : 3 (conductive dust)
Self-extinguishing : 850 °C



Dimensions (mm)

Rating	A	B	C	D	E	F	G	H	I	J
125 A	225	125	110	125	165	189	6.5	117.5	165	108
160 A	240	125	110	125	165	189	6.5	117.5	180	120
250 A	260	155	110	125	185	209	6.5	147.5	195	120

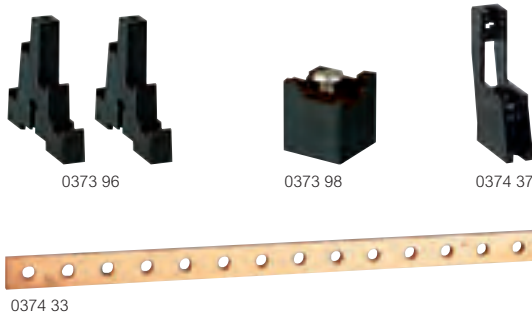
400 A¹ Cat. No. 0373 08 - Ipk peak withstand current 42 kA
Insulation voltage according to EN 60947-1/IEC 60664-1 : 1 000 V
Impulse (surge) voltage (Uimp) : 12 kV
Degree of pollution : 3 (conductive dust)
Self-extinguishing : 960 °C



1 : It is recommended that the unit is fitted horizontally with a minimum face plate height of 300 mm

distribution blocks

self assembly



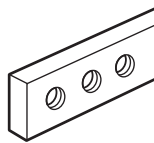
Insulated supports (maximum 280 A)

Pack	Cat. Nos.	Description	Mounting type
5	0373 96	For assembling distribution blocks of varying lengths using bars and connectors below. Supplied with insulated screws for mounting optional protective cover (except Cat. No. 0373 98). Set of 2 insulated 4 pole supports For bars 12 x 2 or 12 x 4 mm	DIN rail 0044 16 supplied or M4 screws not supplied
10	0373 98	Single pole supports For bars 12 x 2 or 12 x 4 mm	by M4 screws supplied
10	0374 37	For bars 15 x 4, 18 x 4 or 25 x 4 mm	

Copper connector bars

With threaded holes

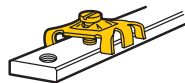
		Size (mm)	Threaded holes Ø mm	Pitch	Max. thermal rating (A)	Length (mm)
10	0373 88	12 x 2	M5	18	110	990
10	0373 89	12 x 4	M5	18	160	990
10	0374 33	15 x 4	M6	18	200	990
10	0374 34	18 x 4	M6	18	245	990
10	0374 38	25 x 4	M6	18	280	990
4	0374 19	32 x 5	M6	25	450	1750



Connectors

Clamp type – For bars with threaded holes 12 x 4 (mm)

100	0373 65	For one or two conductors 1.5 to 10 mm ² (supplied with Ø 5 mm screw)
-----	---------	---



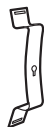
Cage type – For bare 12 x 4 mm bars

		Capacity
100	0373 60	1.5 to 4 mm ²
10	0373 61	6 to 16 mm ²
10	0373 62	10 to 35 mm ² (supplied with hexagonal 5 mm M6 screw)



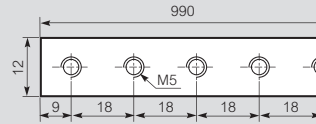
Clips

10	0044 16	For mounting on rail EN 60715 and 15 mm depth 10 mm width With threaded Ø 4 mm hole
----	---------	---

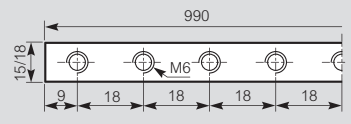


Copper connector bars with threaded holes

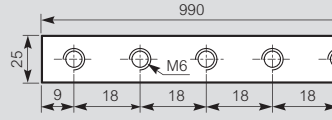
Cat. Nos. 0373 88/89



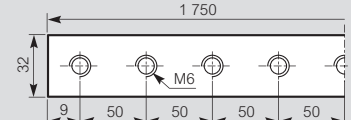
Cat. Nos. 0374 33/34



Cat. No. 0374 38



Cat. No. 0374 19



Cat. Nos.	Size	lth (A)	lc (A)
0373 88	12 x 2	110	80
0373 89	12 x 4	160	125
0374 33	15 x 4	200	160
0374 34	18 x 4	245	200
0374 38	25 x 4	280	250
0374 19	32 x 5	450	400

Current ratings according to EN 60947-1 :

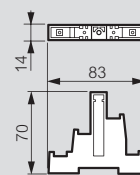
- lth : bars in free air
- lthe : bars enclosed with ventilation
- lc : bars totally enclosed in a weatherproof enclosure

Insulated supports four pole

Insulation voltage according to EN 60947-1/IEC 60664-1 :
Cat. No. 0373 96 : 690 V - Impulse voltage (surge) (Uimp) : 8 kV
Degree of pollution (conductive dust) : 3
Distance between supports (mm)

Cat. Nos.	0373 96
Bar size	12 x 4 (12 x 2)
In (A)	125 (80)
Peak withstand current (kA)	
10	400 (200)
15	300 (150)
20	200 (125)
25	150 (100)
30	-
35	-
40	-

Cat. No. 0373 96

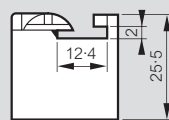


Insulated supports single pole

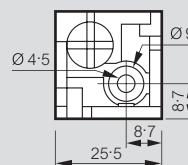
Insulation voltage according to EN 60947-1/IEC 60664-1 : 500 V
Impulse voltage (surge) (Uimp) : 8 kV
Degree of pollution (conductive dust) : 3

Cat. No. 0373 98

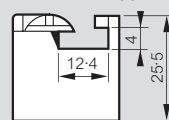
Front view for 12 x 2 mm bar



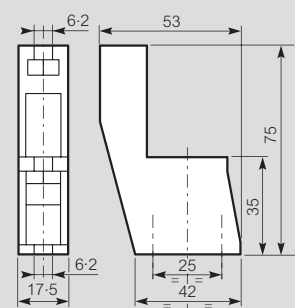
View from above



Front view for 12 x 4 mm bar



Cat. No. 0374 37



Max. space between 2 supports :
bar size 12 x 2 : 20 cm, 12 x 4 : 25 cm

The distance between supports can be determined using the chart
Select the peak withstand current (kA rating) and the distance between bars - dimension E (mm) after choosing your bar and support
Distance between supports (mm)

Cat. Nos.	0373 98				0374 37			
	12 x 2/12 x 4				15 x 4/18 x 4/25 x 4			
In (A)	80/125				160/200/245			
E (mm)	50	75	100	125	50	75	100	125
Peak withstand current (kA)								
10	400	600	800	-	350	600	750	-
15	300	450	600	800	250	400	500	700
20	250	350	450	600	150	225	300	375
25	200	250	300	400	125	150	200	250
30	-	-	-	-	100	125	150	175
35	-	-	-	-	-	100	125	150

Download the full file at

<http://assets.kempstoncontrols.com/doc/Legrand%20Industrial%20and%20power%20protection%20catalogue.pdf>



KEMPSTON
CONTROLS