

Rotary Cam Switches



Enclosed Switches with insulated enclosure 125 × 100 × 133 mm

Enclosed Switches with insulated enclosure 125 × 100 × 133 mm

- with cover interlock, interlocked in ON position
- 20 A / 25 A / 32 A ■ 1 up to max. 12 contacts
- IP66
- Insulated polycarbonate enclosure

- Main/Emergency-Off Switch
- Main Switch



Setup of order code number: Type - Switching programme - Mounting form	Type	Switching programme	Mtg. form
Ordering example: 6 pole ON-OFF Switch 90°, 20 A, padlock device with N-handle yellow/red →	M220	61907	275N4
	Order code no.	M220-61907-275N4	

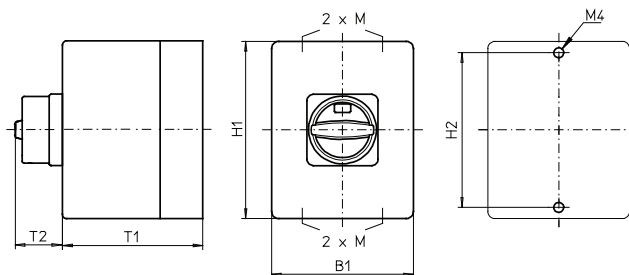
Type	Contacts	Rated data (IEC 60947)			Degree of Protection	Terminal accessibility
		Operational current I _e AC-21A (A)	Operational power (at 380–440 V) AC-23A (kW) AC-3A (kW)			
P220	1 to 10	20	7.5	5.5	IP66	 Terminals accessible from mounting direction
P225	1 to 8	25	11	7.5	IP66	
M220	1 to 12	20	7.5	5.5	IP66	 Terminals accessible laterally
M225	1 to 10	25	11	7.5	IP66	
T225	1 to 8	32	15	11	IP66	 Terminals accessible laterally

Switching programme	Stages	Contacts	Description
61919 for types P220/P225	4	8	ON-OFF Switch 90°, 8 pole, 2 pole early make/late break
61918 for types P220/P225	4	8	ON-OFF Switch 90°, 8 pole
61910 for types P220	5	10	ON-OFF Switch 90°, 10 pole
61907 for types M220/M225/T225	4	8	ON-OFF Switch 90°, 6 pole, 2 auxiliary contacts
61910 for types M220/M225	5	10	ON-OFF Switch 90°, 10 pole

Switching diagrams and further switching programmes from page 56.

Mounting form	Operator	Main/Emergency-Off Switch	Mounting form	Operator	Main Switch
275N4		padlock device with N-handle yellow/red	275N1		padlock device with N-handle black
275M4		padlock device with M-handle yellow/red	275M1		padlock device with M-handle black
275V4		padlockable with V-handle yellow/red	275V1		padlockable with V-handle silver/black

Dimensions in mm:



Mounting form	H1	B1	T1	T2	2 × M	H2
275N4/275N1	125	100	133	33	20/25	115
275M4/275M1	125	100	133	38	20/25	115
275V4/275V1	125	100	133	32	20/25	115