

# locking accessories

for Atlantic stainless steel and Marina enclosures

## Lock housings for rebate or cylinder locks

Pack	Cat. Nos.	Description	Image
10	0368 04	Interchangeable for Atlantic stainless steel and Marina enclosures Plastic housing (excludes barrel and cam)	
10	0368 05	Handle With blank (excludes cam)	
10	0368 06	Handle Fitted with locking barrel 2433 A (excludes cam)	

## Locking cams

10	0365 30	For Marina enclosures	
10	0368 43	For Atlantic stainless steel 1 door enclosures	
10	0368 44	For Atlantic stainless steel 2 door enclosures	

**Note :** Cam nuts are supplied with the handle or housing

## Metal rebate lock barrels

10	0368 17	6.5 mm male triangle	
10	0368 18	8 mm male triangle	
10	0368 19	11 mm male triangle	
10	0368 20	Double bar	

## Key barrels

		Supplied with set of 2 keys For key No :	
10	0368 22	405	
10	0368 23	421	
10	0368 24	455	
10	0368 25	1242 E	
10	0368 26	2433 A	
10	0368 27	3113 A	
10	0365 45	Set of two 2433 A keys	

## Keys for rebate locks

10	0365 39	For 6.5 mm male triangle lock	
10	0365 40	For 8 mm male triangle lock	
10	0365 41	For 11 mm male triangle lock	
10	0365 42	For double bar	

## Padlocking

		<b>Padlock adaptor</b>	
1	0365 11	Metal painted black-grey RAL 7021 Fits over door handles to provide security Accepts up to 3 padlocks (not included)	

## Universal locking system<sup>1</sup>

The locks can be assembled and fitted to all Atlantic stainless steel and Marina enclosures

### Lock barrels

6.5 mm triangle male  
Cat. No. 0368 17

8 mm male triangle  
Cat. No. 0368 18

11 mm male triangle  
Cat. No. 0368 19

Double bar  
Cat. No. 0368 20

### Key barrels

No. 405  
Cat. No. 0368 22

No. 421  
Cat. No. 0368 23

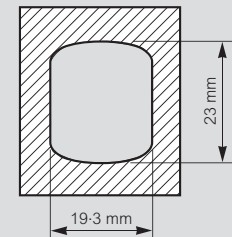
No. 455  
Cat. No. 0368 24

1242 E  
Cat. No. 0368 25

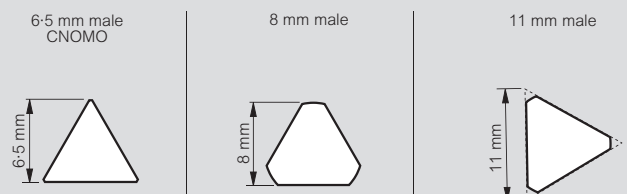
2433 A  
Cat. No. 0368 26

3113 A  
Cat. No. 0368 27

### Detail of cut-out

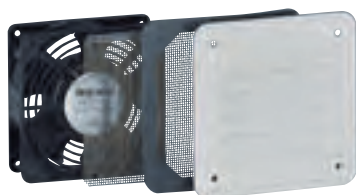


## Dimensions of special triangle locks



1 : The metal locks (special barrels and key barrels) and lock barrels are all compatible with each other

## ventilation for enclosures



0348 17



0365 79



0348 04



0348 52



0348 89



0348 05



0348 35

### Technical information and dimensions p. 30

Pack	Cat. Nos.	Ventilation fan kit with metal grill
1	0348 17	<p>IP 32 - IK 10 230 V - 50/60 Hz RAL 7035 Ventilator is mounted on the outside of the enclosure 30 m<sup>3</sup>/h with filter - 160 m<sup>3</sup>/h without filter installed (free flowing) Pack comprising a pair of metal RAL 7035 louvres and a pair of anti-insect grills, plus internal finger protection</p>

Pack	Cat. Nos.	Ventilation fan kits with plastic grill
1	0348 50	<p>IP 54 - IK 08 230 V - 50/60 Hz RAL 7035 plastic housing Supplied with finger protection guards External projection 7-10 mm Accepts mounting spacer Cat. No. 0348 88/89 Used to reduce internal projection and improve wiring space Fitted externally on to the enclosure with rapid fix screws 1 mm to 4 mm panel thickness An extra louvre can be fitted to improve air flow and extraction</p> <p><b>40/160 m<sup>3</sup>/h</b> 40 m<sup>3</sup> with filter 45 m<sup>3</sup> with extra grill/filter Cat. No. 0348 34 160 m<sup>3</sup> without filter installed (free flowing) Pack comprising a pair of RAL 7035 plastic grills 150 x 150 mm and washable electrostatic filter EU3, G3</p>
1	0348 51	<p><b>120/160 m<sup>3</sup>/h</b> 120 m<sup>3</sup> with filter 130 m<sup>3</sup> with extra grill/filter Cat. No. 0348 35 160 m<sup>3</sup> without filter installed (free flowing) Pack comprising a pair of RAL 7035 plastic grills 250 x 250 mm and washable filter EU3, G3</p>
1	0348 52	<p><b>240/450 m<sup>3</sup>/h</b> 240 m<sup>3</sup> with filter 260 m<sup>3</sup> with extra grill/filter Cat. No. 0348 35 450 m<sup>3</sup> without filter installed (free flowing) Pack comprising a pair of RAL 7035 plastic grills 250 x 250 mm and washable filter EU3, G3</p>

Pack	Cat. Nos.	Spacers for ventilation fan kits
1	0348 88	IP 54 maintained RAL 7035 Used to reduce the internal projection and increase the internal usable volume 150 x 150 mm
1	0348 89	250 x 250 mm

Pack	Cat. Nos.	Natural ventilation
2	0365 78	<b>Ventilation glands</b> IP 44 - IK 08 for outdoor use Grey polyamide Ø 15 mm aperture needed
2	0365 79	Ø 30.5 mm aperture needed
1	0348 04	<b>Ventilation louvres - metal</b> IP 32 - IK 10 RAL 7035 Pack comprising a pair of metal louvres and a pair of anti-insect grills 138 x 138 mm
1	0348 05	248 x 248 mm
1	0348 34	<b>Ventilation louvres - plastic</b> RAL 7035 Supplied singly Supplied with 10 mm thick filter EU 3, G3 IP 44 - 150 x 150 mm
1	0348 35	Supplied with 20 mm thick filter EU 3, G3 IP 54 - 250 x 250 mm
1	0348 36	IP 54 - 325 x 325 mm

### Heating p. 31



Download the full file at

<http://assets.kempstoncontrols.com/doc/Legrand%20Industrial%20and%20power%20protection%20catalogue.pdf>



**KEMPSTON**  
CONTROLS