

BETAETIGER-S-WQT-LN (ORDER NO. 095741)

Actuator L, bent, for safety switches SGA/SGP/STA/STP/STM for insertion funnel

- ▶ Two safety screws included
- ▶ Actuators with rubber bushings



DESCRIPTION

Notice

Type S actuators must not be used in conjunction with insertion funnels. L actuators must be used for insertion funnels.

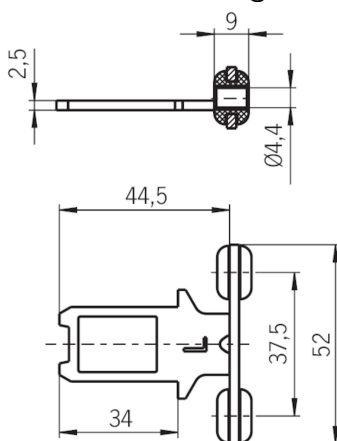
Bent actuator

Suitable for a maximum tensile force of 1,000 N.

Screws made of stainless steel

The safety screws included can be inserted with a normal tool, but cannot be removed again.

Dimension drawing



TECHNICAL DATA

Mechanical values and environment

Material	
	rubber bush NBR
	Actuator Stainless steel
	screw Stainless steel
Door radius	min.300 mm
Locking force F_{\max}	max.1000 N Reduced locking force by actuator
Overtravel	max.5 mm
Other	
Usability of insertion funnel	Yes

ACCESSORIES

Mounting accessories

Safety screws M4 x 14

074063
M4X14/V100

- Safety screws M4 x 14
- Packaging unit 100 pieces

Safety screws M4 x 14, large head

086232
M4X14-NIRO/V100

- Safety screws M4 x 14 (large head)
- Packaging unit 100 pieces

Contacts

🏠 EUCHNER GmbH + Co. KG
Kohlhammerstraße 16
70771 Leinfelden-Echterdingen

📞 +49 711 7597-0

📠 +49 711 753316

✉ info(at)euchner.de