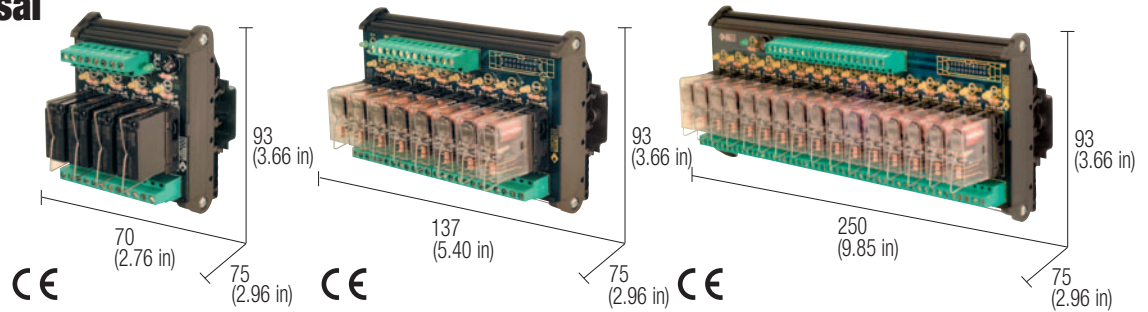


110...120 Vac/dc SPDT relay modules universal control voltage

- DC and AC control voltage
- Positive or negative control voltage
- Status LED display
- Pluggable relay



NOTES

The height dimension includes 35 mm DIN rail.
(1) Relay model is not binding, they may be modified without prior warning. The technical data shown here is to be considered typical.

Article available until sell-out

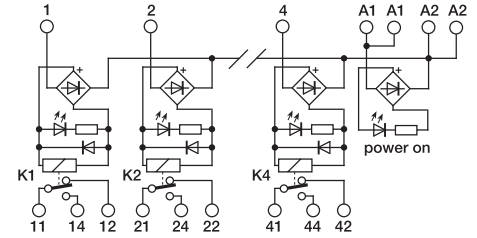
With 110 Vdc rated voltage:

- replace XR041E11A with no.4 XCM1C110 and no.1 XCMB16B
- replace XR081E11A with no.8 XCM1C110 and no.1 XCMB16B
- replace XR161E11A with no.16 XCM1C110 and no.2 XCMB16B

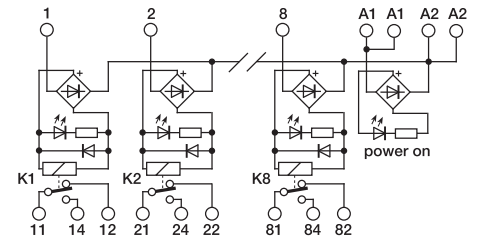
With 120 Vac rated voltage:

- replace XR041E11A with no.4 XCM1A120 and no.1 XCMB16B
- replace XR081E11A with no.8 XCM1A120 and no.1 XCMB16B
- replace XR161E11A with no.16 XCM1A120 and no.2 XCMB16B

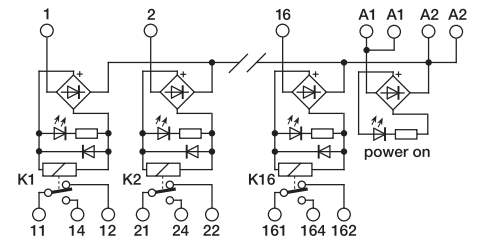
BLOCK DIAGRAM



4 relay module



8 relay module



16 relay module

VERSIONS

4 relay module

8 relay module

16 relay module

INPUT TECHNICAL DATA

Rated voltage	110 Vdc / 120 Vac \pm 10%
Rated current (1 channel)	11 mA \pm 10%
Turn ON time	7 ms
Turn OFF time	3 ms
Protection circuit	damping diode and bridge rectifier

OUTPUT TECHNICAL DATA

Type and number of contacts	SPDT AgNi
Nominal load (resistive)	12 A / 250 Vac
Current breaking power	12 A
Current of the fuse max.	—

GENERAL TECHNICAL DATA

Operating temperature range	-10...+50°C
Coil/contact isolation	2.5 kVac / 60 s
Isolation between output terminals	1 kVac / 60 s (between open contact)
Protection degree	IP 00 IEC 529, EN60529
Overvoltage category / Pollution degree	III / 2
Reference Standard	IEC 664-1, DIN VDE 0110.1
Status display	green LED / yellow LED
Connection terminal	2.5 mm ² fixed screw type
Housing material	UL94V-0 plastic material
Approx. weight	192 g (6.76 oz) 345 g (12.18 oz) 688 g (24.29 oz)
Mounting information	vertical on rail adjacent without gap

MOUNTING ACCESSORIES

Mounting rail type according to IEC60715/TH35	PR/3/AC, PR/3/AC/ZB, PR/3/AS, PR/3/AS/ZB
Mounting rail type according to IEC60715/G32	PR/DIN/AC - PR/DIN/AS - PR/DIN/AL
Replacement relay (1)	Cat. No. 8904047

Screw type jumper	red
	white
	blue

POWER SUPPLY

A1 = +	A2 = -	negative common
A1 = -	A2 = +	positive common
A1 = ~	A2 = ~	AC power supply