

Contactor assembly star-delta (wye-delta) (pre-assembled) with lateral timing relay AC-3, 11 kW/400 V, 3-pole Size S0, S0, S0 Electrically interlocked screw terminal 230 V AC, 50/60 Hz



Figure similar

General technical data:		
Product brand name		SIRIUS
Product designation		contactor assembly
Product function		wye-delta-contactor
Size of contactor		S0, S0, S0
Protection class IP on the front		IP20
Degree of pollution		3
Insulation voltage with degree of pollution 3 rated value	V	690
Installation altitude at height above sea level maximum	m	2 000
Ambient temperature		
• during operation	°C	-25 ... +60
• during storage	°C	-55 ... +80
• during transport	°C	-55 ... +80
Reference indentifier acc. to DIN 40719 extended according to IEC 204-2 acc. to IEC 750		K
Reference identifier acc. to DIN EN 61346-2		Q

<b>Mechanical service life (switching cycles)</b>		
• of the main contacts typical		10 000 000
• of auxiliary contacts typical		10 000 000
• of the contactor with added auxiliary switch block typical		10 000 000
<b>Main circuit:</b>		
Number of poles for main current circuit		3
Number of NC contacts for main contacts		0
Operating voltage at AC-3 rated value maximum	V	690
Operating current at AC-3 at 400 V rated value	A	25
Operating power at AC-3		
• at 400 V rated value	kW	11
• at 500 V rated value	kW	15.6
• at 690 V rated value	kW	19
<b>Control circuit/ Control:</b>		
Control version of the switch operating mechanism		conventional
Design of the surge suppressor		without
Type of voltage of the control supply voltage		AC
Control supply voltage frequency		
• 1 rated value	Hz	50
• 2 rated value	Hz	60
Control supply voltage 1		
• at AC		
— at 50 Hz rated value	V	230
— at 60 Hz rated value	V	230
Operating range factor control supply voltage rated value of magnet coil		
• at AC		
— at 50 Hz		0.8 ... 1.1
— at 60 Hz		0.85 ... 1.1
• at DC		0.8 ... 1.1
<b>Auxiliary circuit:</b>		
Product extension Auxiliary switch		Yes
Number of NC contacts for auxiliary contacts		
• instantaneous contact		4
• lagging switching		0
Number of NO contacts for auxiliary contacts		
• instantaneous contact		4
• leading contact		0
<b>Short-circuit:</b>		
Design of the fuse link		

- for short-circuit protection of the auxiliary switch required
- for short-circuit protection of the main circuit
  - with type of coordination 1 required
  - with type of assignment 2 required

fuse gL/gG: 10 A

fuse gL/gG: 63 A

fuse gL/gG: 25 A

#### Installation/ mounting/ dimensions:

<b>Mounting position</b>		with vertical mounting surface +/-180° rotatable, with vertical mounting surface +/- 30° tiltable to the front and back
<b>Mounting type</b>		screw and snap-on mounting onto 35 mm standard mounting rail according to DIN EN 50022
<b>Width</b>	mm	158
<b>Height</b>	mm	88
<b>Depth</b>	mm	135
<b>Required spacing</b>		
• with side-by-side mounting at the side	mm	0
• for grounded parts at the side	mm	0
• for live parts		
— at the side	mm	0

#### Connections/ Terminals:

<b>Type of electrical connection for main current circuit</b>	screw-type terminals
---	----------------------

#### Certificates/ approvals:

<b>Certificate of suitability</b>	CE / UL / CCC / GL / LRS / BV / DNV / RMRS / RINA / PRS / ABS
-----------------------------------	---

General Product Approval	Declaration of Conformity	Shipping Approval	other
--------------------------	---------------------------	-------------------	-------



[Confirmation](#)

#### Safety related data:

<b>Contact reliability of auxiliary contacts</b>	1 faulty switching per 100 million (17 V, 1 mA)
--	---

#### Further information

**Information- and Downloadcenter (Catalogs, Brochures,...)**

<http://www.siemens.com/industrial-controls/catalogs>

**Industry Mall (Online ordering system)**

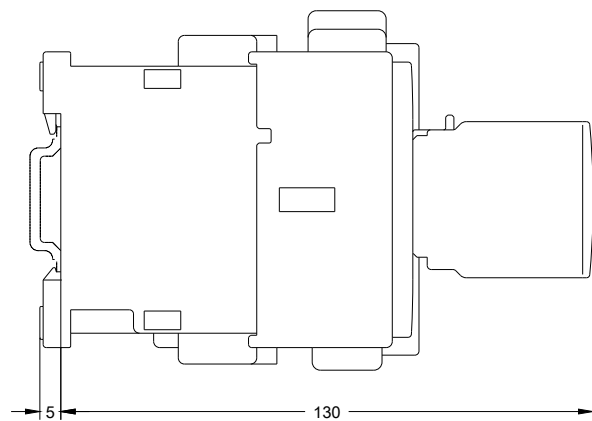
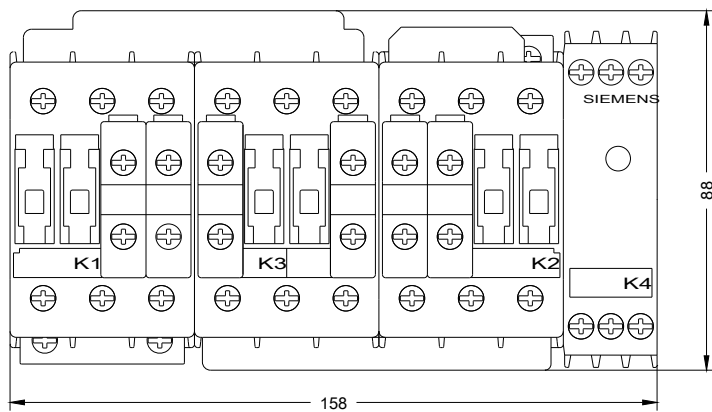
<http://www.siemens.com/industrymall>

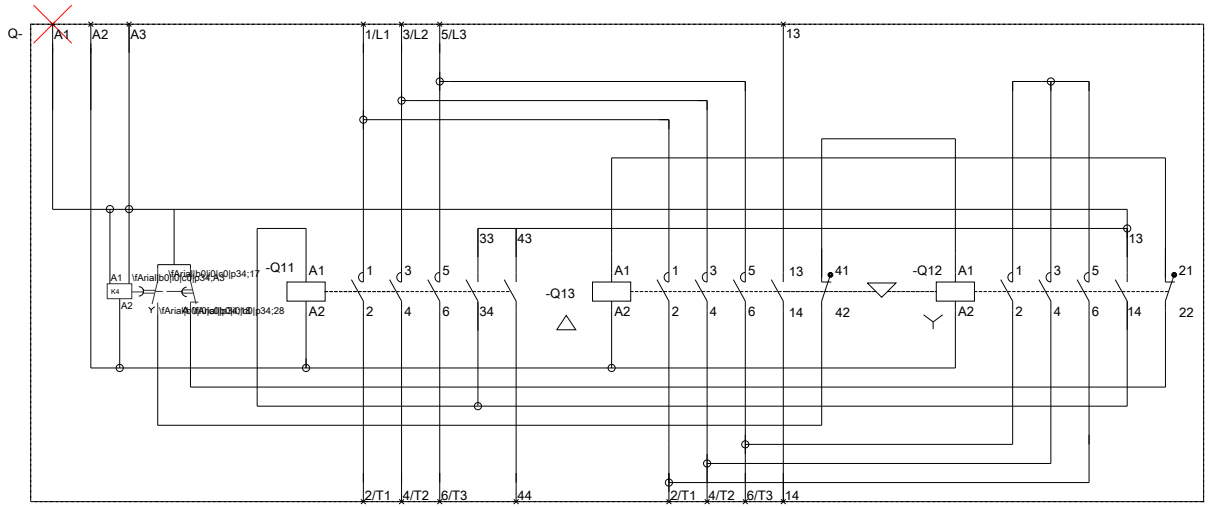
**Cax online generator**

<http://support.automation.siemens.com/WW/CAXorder/default.aspx?lang=en&mlfb=3RA1423-8XC21-1AL2>

**Service&Support (Manuals, Certificates, Characteristics, FAQs,...)**

<https://support.industry.siemens.com/cs/ww/en/ps/3RA1423-8XC21-1AL2>





last modified:

04/29/2018