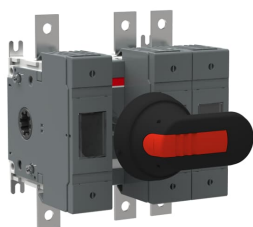


PRODUCT-DETAILS

# OS100GB12P

## OS100GB12P SWITCH FUSE



### General Information

Extended Product Type	OS100GB12P
Product ID	1SCA114586R1001
EAN	6417019469911
Catalog Description	OS100GB12P SWITCH FUSE
Long Description	Switch Fuses,Front Operated,3-pole,12 (Between the Poles),British Standard,A2-A4,Handle and shaft included,

### Ordering

Minimum Order Quantity	1 piece
Customs Tariff Number	85365080
Country of Origin	Finland (FI)

### Popular Downloads

Data Sheet, Technical Information	1SCC311013C0201
Instructions and Manuals	1SCC311037M0206

### Dimensions

Product Net Width	147 mm
-------------------	--------

Product Net Height	140 mm
Product Net Depth / Length	115 mm
Product Net Weight	2.06 kg 4.54 lb

## Technical

Rated Operational Current AC-21A ( $I_e$ )	(500 V) 100 A (690 V) 100 A
Rated Operational Current AC-22A ( $I_e$ )	(500 V) 100 A (690 V) 100 A
Rated Operational Current AC-23A ( $I_e$ )	(500 V) 100 A (690 V) 100 A
Rated Operational Power AC-23A ( $P_e$ )	(220 ... 240 V) 30 kW (400 V) 55 kW (415 V) 55 kW (500 V) 55 kW (690 V) 90 kW
Conventional Free-air Thermal Current ( $I_{th}$ )	q = 40 °C 100 A
Conventional Thermal Current ( $I_{the}$ )	Fully Enclosed 100 A
Rated Impulse Withstand Voltage ( $U_{imp}$ )	8 kV
Rated Insulation Voltage ( $U_i$ )	1000 V
Rated Operational Voltage	Main Circuit 690 V AC
Rated Short-time Withstand Current Low Voltage ( $I_{cw}$ )	for 1 s 5 kiloampere rms
Rated Conditional Short-Circuit Current ( $I_{nc}$ )	(690 V) 80 kA
Power Loss	at Rated Operating Conditions per Pole 12 W
Pollution Degree	3
Handle Type	Pistol handle and shaft included
Switches Operating Mechanism	12 (Between the Poles)
Position of Line Terminals	Top In - Bottom Out, Bottom In - Top Out
Fuse Size	A2-A4
Fuse System	British Standard
Operating Mode	Front Operated
Standards	IEC 60947-3
Mounting Type	Base mounting
Number of Poles	3
Cable Cross-Section	2.5 ... 25 mm <sup>2</sup>
Terminal Type	Lug terminals
Terminal Width	20 mm
Tightening Torque	15 ... 22 N·m
Fuse Type	BS
Rated Current ( $I_n$ )	Main Circuit 100 A

## Environmental

RoHS Status	Following EU Directive 2011/65/EU and Amendment 2015/863 July 22, 2019
-------------	--

---

## Certificates and Declarations (Document Number)

---

CCC Certificate	CCC OS100-160G_2015.pdf
Declaration of Conformity - CE	1SCC311137D2703
DNV GL Certificate	1SCC311125D0203
EAC Certificate	EAC OT_OTDC_OTL_OTP_OTR_OTU_OTE_OETL_OESA_OESC_OTM_OS_OSM_.pdf
Instructions and Manuals	1SCC311037M0206
RoHS Information	1SCC311137D2703

---

## Container Information

---

Package Level 1 Units	box 1 piece
Package Level 1 Width	170 mm 6.7 in
Package Level 1 Depth / Length	220 mm 8.7 in
Package Level 1 Height	150 mm 5.9 in
Package Level 1 Gross Weight	2.2 kg 4.9 lb
Package Level 1 EAN	6417019469911

---

## Classifications

---

Object Classification Code	Q
ETIM 4	EC001040 - Fuse switch disconnecter
ETIM 5	EC001040 - Fuse switch disconnecter
ETIM 6	EC001040 - Fuse switch disconnecter
ETIM 7	EC001040 - Fuse switch disconnecter
ETIM 8	EC001040 - Fuse switch disconnecter
WEEE Category	5. Small Equipment (No External Dimension More Than 50 cm)

---

## Categories

---

Low Voltage Products and Systems → Switches → Switch Fuses

