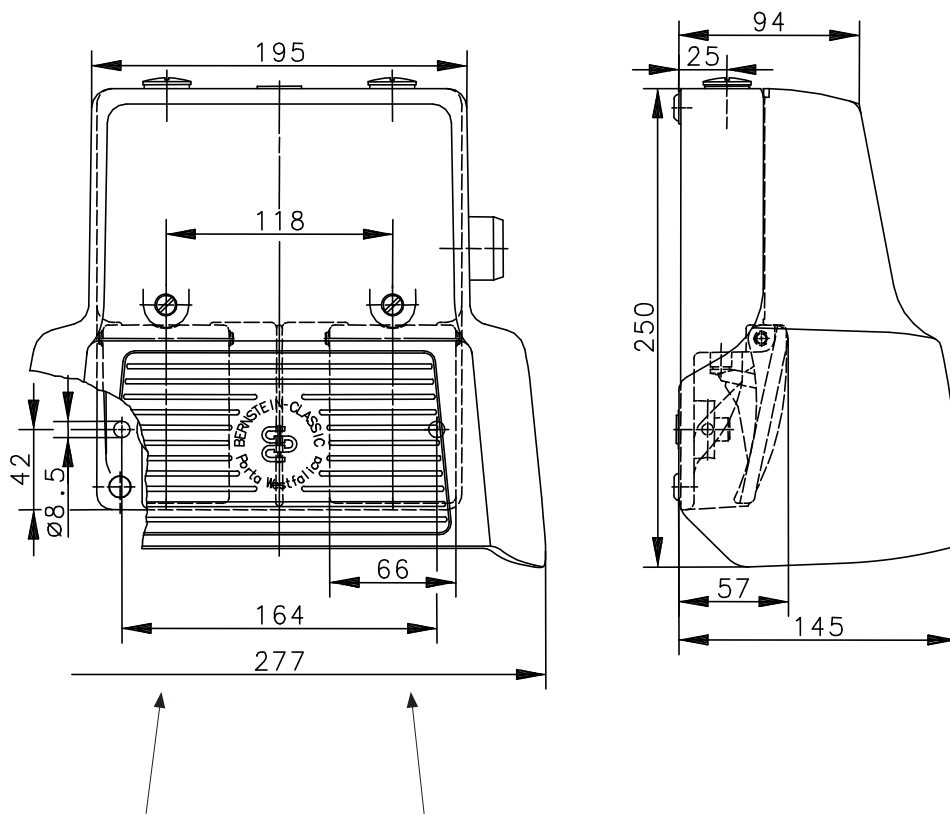


Foot-switch
Series F2 UN

Description **F2-CSE2CU1ZD/SU1ZCA2ZD Rast UN**

Article number **6162000705**

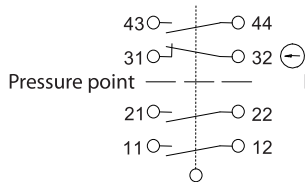


Switching symbol

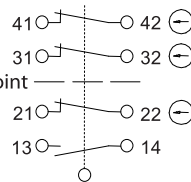
Pedal left

Pedal right

(Three-Step-Safety Switch with latch „Off-On-OFF)

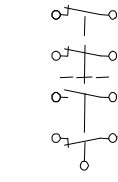


Pressure point



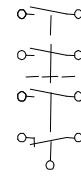
Pressure point

1. position
Off-position



2. position
On-position

To reach the 3rd position,
the tactile touch has to be
surmounted.



3. position
Latch-position

Electrical Data		
Rated insulation voltage	U_i	250 V AC
Conv. thermal current	I_{the}	10 A
Rated operational voltage	U_e	240 V
Utilization category		AC-15, U_e / I_e 240 V AC / 3 A
Direct opening action	⊙	acc. to IEC/EN 60947-5-1, annex K
Short-circuit protective device		Fuse 2 A gG
Protection class		I

Mechanical data	
Enclosure	AL, die-cast
Protective guard (Accident protection cover UN)	AL, die-cast
Actuator	Foot lever (PA)
Ambient air temperature	-30 °C to +80 °C
Contact type	4 NC, 4 NO. (Zb)
Operating force (pedal centre)	10 N
Pressure point (pedal right)	≈ 200 N
Mechanical life	
pedal left	3 x 10 ⁶ operating cycles
pedal right	1 x 10 ⁶ operating cycles
Switching frequency	max. 30/min
Assembly	2 x M8
Connection	screw connections (M3,5)
Number of connection	16
Protection ground	2 x M4
Conductor cross-sections	Solid: 0,5 ... 1,5 mm ² Litz wire with ferrules: 0,5 ... 1,5 mm ²
Cable entrance	1 x M20 x 1,5
Weight	≈ 2,6 kg
Protection type	IP65 in accordance with IEC/EN 60529

ID for safety engineering		
B10d	pedal left	6 x 10 ⁶ operating cycles
	pedal right	2 x 10 ⁶ operating cycles

Regulations	
	VDE 0660 T100, DIN EN 60947-1, IEC 60947-1
	VDE 0660 T200, DIN EN 60947-5-1, IEC 60947-5-1
	DIN EN ISO 13849-1

EU Conformity	
	acc. to directive 2014/35/EU (Low-Voltage-Directive)

Function
<p>Three-stage safety switch with latching</p> <p>The safety contact element consists of two adjoining switching systems which guarantee a normal work flow and in the case of an emergency the safety function "emergency-stop".</p> <ol style="list-style-type: none"> 1. The normal work flow is initiated by pressing down the pedal to the pressure point, whereby the contacts 13 – 14 are closed and 21 – 22 are opened in succession. 2. In the case of an emergency, the pedal is pressed as far as it will go beyond the pressure point. The NC contacts (31 – 32 and 41 – 42) are force-opened and thereby the work process stops. At the same time, the automatic latching function is activated and holds the contacts (31 – 32 and 41 – 42) in "emergency-stop position". This reliably prevents uncontrolled restart of the machine or moving parts. <p>Safety for man and machine!</p> <ol style="list-style-type: none"> 3. Only after the release of the pushbuttons on the side of the enclosure, the contacts will be released again and can be closed again by pressing the pedal beyond resistance of the pressure point. <p>The working process continues.</p>

Notes
<p>The degree of protection specified (IP code) applies only to a properly closed protective guard and the use of an equivalent cable gland with adequate cable.</p>