

TIME RELAY, SOLID-STATE, WITH STAR-DELTA  
 FUNCTION 2 NO 7 TIME RANGES 0.05S...100H  
 AC/DC 12...240V SCREW TERMINAL



General technical data:		
product brand name		SIRIUS
Product designation		timing relay
Adjustable time	s	0.05 ... 360 000
Protection class IP		
• of the terminal		IP20
Degree of pollution		2
Mounting position		any
Product function		
• at the relay outputs Switchover delayed/without delay		No
Product component semi-conductor output		No
Product extension		
• optional remote control		No
• required remote control		No
Installation altitude at height above sea level maximum	m	2 000
Ambient temperature		
• during storage	°C	-40 ... +70

• during operation	°C	-25 ... +55
• during transport	°C	-40 ... +70
Relative humidity during operation	%	15 ... 85
<b>Conducted interference due to burst acc. to IEC 61000-4-4</b>		2 kV network connection / 1 kV control connection
<b>Conducted interference due to conductor-earth surge acc. to IEC 61000-4-5</b>		2 kV
<b>Conducted interference due to conductor-conductor surge acc. to IEC 61000-4-5</b>		1 kV
<b>Electrostatic discharge acc. to IEC 61000-4-2</b>		4 kV contact discharge / 8 kV air discharge
<b>Field-bound parasitic coupling acc. to IEC 61000-4-3</b>		10 V/m
<b>Surge voltage resistance rated value</b>	V	4 000
<b>Power loss [W] total typical</b>	W	2
<b>Equipment marking acc. to DIN 40719 extended according to IEC 204-2 acc. to IEC 750</b>		K
<b>Equipment marking acc. to DIN EN 61346-2</b>		K

#### Switching Function:

<b>Switching function</b>		
• passing make contact		No
• OFF delay		No
• with control signal		
— passing break contact		No
— OFF delay		No
— additive ON delay		No
— passing break contact/instantaneous		No
— OFF delay/instantaneous		No
— ON-delay/OFF-delay/instantaneous		No
— pulse-shaping/instantaneous		No
— pulse-shaping		No
• ON-delay/instantaneous contact		No
• passing make contact/instantaneous contact		No
• ON-delay		No

#### Control circuit/ Control:

<b>Type of voltage of the control supply voltage</b>		AC/DC
Control supply voltage frequency 1	Hz	50 ... 60
Control supply voltage 1		
• at AC		
— at 50 Hz	V	12 ... 240
— at 60 Hz	V	12 ... 240
• at DC	V	12 ... 240

#### Auxiliary circuit:

<b>Operating current of auxiliary contacts</b>		
--	--	--

<ul style="list-style-type: none"> <li>• at AC-15 <ul style="list-style-type: none"> <li>— at 24 V</li> <li>— at 250 V</li> </ul> </li> <li>• at DC-13 <ul style="list-style-type: none"> <li>— at 24 V</li> <li>— at 125 V</li> <li>— at 250 V</li> <li>— maximum</li> </ul> </li> </ul>	A	3
	A	3
	A	1
	A	0.22
	A	0.1
	A	1
<b>Number of NC contacts</b>		
<ul style="list-style-type: none"> <li>• delayed switching</li> <li>• instantaneous contact</li> </ul>		0
		0
<b>Number of NO contacts</b>		
<ul style="list-style-type: none"> <li>• delayed switching</li> <li>• instantaneous contact</li> </ul>		2
		0
<b>Number of CO contacts</b>		
<ul style="list-style-type: none"> <li>• delayed switching</li> <li>• instantaneous contact</li> </ul>		0
		0

#### Short-circuit:

<b>Design of the fuse link for short-circuit protection of the auxiliary switch required</b>		fuse gL/gG: 4 A
--	--	-----------------

#### Installation/ mounting/ dimensions:

<b>Mounting type</b>		snap-on fastening on 35 mm standard rail
<b>Width</b>	mm	17.5
<b>Height</b>	mm	90
<b>Depth</b>	mm	66.7
<b>Required spacing</b>		
<ul style="list-style-type: none"> <li>• with side-by-side mounting <ul style="list-style-type: none"> <li>— upwards</li> <li>— downwards</li> <li>— forwards</li> <li>— Backwards</li> <li>— at the side</li> </ul> </li> <li>• for grounded parts <ul style="list-style-type: none"> <li>— upwards</li> <li>— downwards</li> <li>— forwards</li> <li>— Backwards</li> <li>— at the side</li> </ul> </li> <li>• for live parts <ul style="list-style-type: none"> <li>— upwards</li> <li>— downwards</li> </ul> </li> </ul>	mm	0
	mm	0
	mm	0
	mm	0
	mm	0
	mm	0
	mm	0
	mm	0
	mm	0
	mm	0
	mm	0

— forwards	mm	0
— Backwards	mm	0
— at the side	mm	0

#### Connections/ Terminals:

##### Type of electrical connection

- for auxiliary and control current circuit
- screw-type terminals

#### Certificates/ approvals:

##### General Product Approval

##### Declaration of Conformity



CCC



UL



EG-Konf.

#### Safety related data:

Category acc. to EN 954-1	none
Protection against electrical shock	finger-safe

#### Further information

##### Information- and Downloadcenter (Catalogs, Brochures,...)

<http://www.siemens.com/industrial-controls/catalogs>

##### Industry Mall (Online ordering system)

<http://www.siemens.com/industrymall>

##### Cax online generator

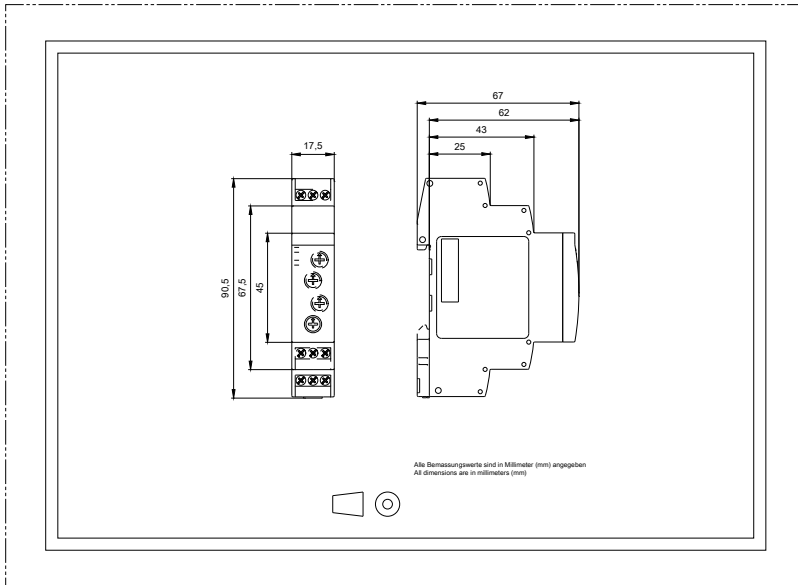
<http://support.automation.siemens.com/WW/CAXorder/default.aspx?lang=en&mlfb=7PV15781BW30>

##### Service&Support (Manuals, Certificates, Characteristics, FAQs,...)

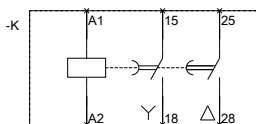
<https://support.industry.siemens.com/cs/ww/en/ps/7PV15781BW30>

##### Image database (product images, 2D dimension drawings, 3D models, device circuit diagrams, EPLAN macros, ...)

[http://www.automation.siemens.com/bilddb/cax\\_de.aspx?mlfb=7PV15781BW30&lang=en](http://www.automation.siemens.com/bilddb/cax_de.aspx?mlfb=7PV15781BW30&lang=en)



ZEITRELAIS, ELEKTRONISCH  
MIT STERN-DELTAFUNKTION  
2 SCHLEISSER



last modified:

21.03.2016

TIME RELAY, STAR-DELTA FUNCTION,  
2 NO CONTACT CONTACTS