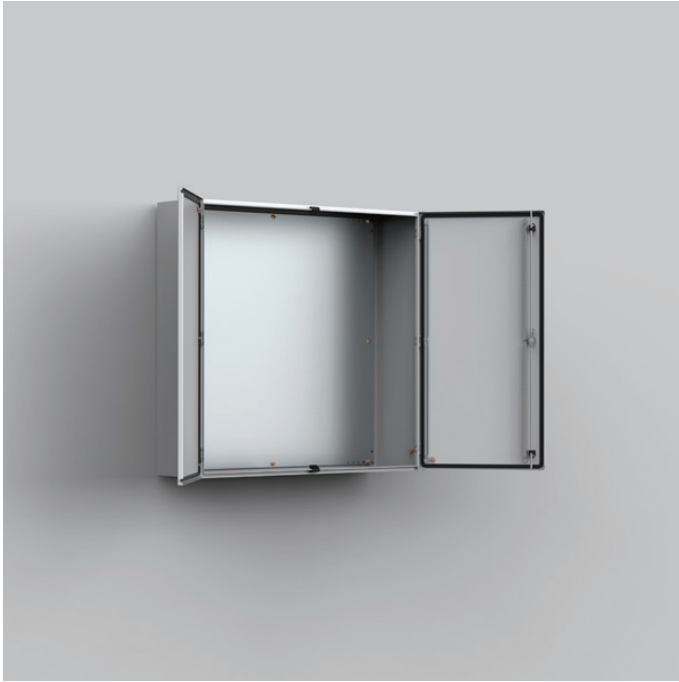


MAD

MILD STEEL, DOUBLE DOOR ENCLOSURE



IP 55 | TYPE 12, 13 | IK 10

The wall mounted range of mild steel enclosures is also available in double door versions and complies with IP 55. There are 5 sizes available and a range of accessories. The standard finish is RAL 7035, although other colours and sizes are available on request.

Material: Body: 1.5 mm mild steel. Gland plate: 1.4 mm mild steel. Door: 2 mm mild steel Mounting plate: 2 mm galvanized steel / 2.5 mm MAD1001030R5 and above.

Body: Folded and seam welded. Four 8.5 mm diameter holes for wall fixing, pressed out in 20.4 mm diameter x 2 mm depressions to allow air circulation around the rear part of the enclosure.

Door: Surface mounted with 130° opening. Concealed removable hinges with captive pin. Two removable mounting profiles in the right hand door. Sealing is ensured by an extruded one piece polyurethane gasket.

Lock: Customised lock with double-bit for easy opening of the door, double-bit 3 mm insert and 90° movement. Espagnolette three point locking. Other inserts are available as an accessory.

Mounting plate: The mounting plate is marked vertically at 10 mm intervals for easy horizontal positioning of equipment. On the top and bottom there are holes to facilitate cable fixing. Fixed onto M8 press welded studs to the rear of the enclosure. All sides from 800 mm and above are strengthened by folded edges. By using the AMG accessory the mounting plate position can be adjusted to any depth.

Gland Plate Opening: Situated at the far rear of the enclosure to make cabling onto the mounting plate easier.

Protection: IP 55 | TYPE 12, 13 | IK 10. For outdoor installation the use of a rain hood ARF and 100% polyester paint coating is recommended. The corrosion resistance must be taken into consideration.

Finish: RAL 7035 structured powder coating.

Delivery: Enclosure with doors, and two door mounting profiles on the right door. Gland plate(s) with gasket(s), metallic DIN 3 mm key, and mounting accessories. Earthing facilities.

With mounting plate

Enclosure dimensions			Mounting plate dimensions		Usable depth	Gland plate				N° of locks	Weight (kg)	Item no.
H	W	D	h	w	d	Size	Type					
600	800	300	570	750	282	310x96	2	2		1*	31,00	
800	1200	300	770	1150	282	510x96	4	2		1*	58,00	
1000	1000	300	970	950	282	410x96	3	2		1*	68,85	
1200	1000	300	1170	950	282	410x96	3	2		1*	78,85	
1200	1200	300	1170	1150	282	510x96	4	2		1*		
1400	1000	300	1370	950	282	410x96	3	2		1*	89,00	

Without mounting plate

Enclosure dimensions			Gland plate								
H	W	D	Size	Type	Openings	N° of locks	Weight (kg)	Item no.			
600	800	300	310x96	2	2	1*	25,30	MAD-0608030PER5			
800	1200	300	510x96	4	2	1*	42,00	MAD-0801230PER5			
1000	1000	300	410x96	3	2	1*	65,00	MAD-1001030PER5			
1200	1000	300	410x96	3	2	1*	57,00	MAD-1201030PER5			
1200	1200	300	510x96	4	2	1*					
1400	1000	300	410x96	3	2	1*	61,80	MAD-1401030PER5			

* 3 point espagnolette locking.