

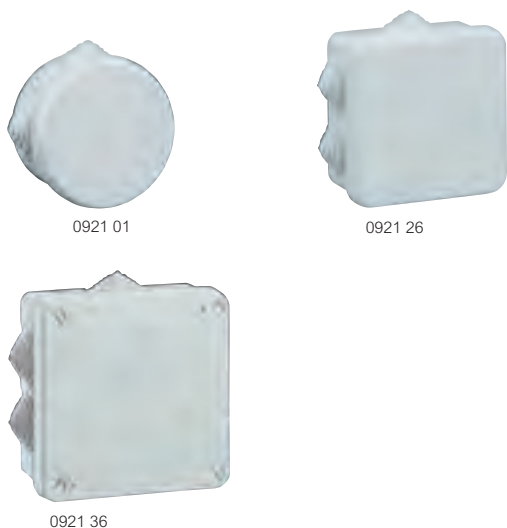
Plexo weatherproof boxes

selection chart

DIMENSIONS	CABLE ENTRY	INDUSTRIAL BOXES				ACCESSORIES		
		With IP 55 plain clip-on covers	With IP 55 covers		With IP 55 plain hinged covers - 2 x 1/4 turn fixings	With IP 66 plain covers	Mounting plates	Hinge kit accessories
<p>Internal dimensions (mm) Height x Width x Depth</p>	<p>Cable entry type</p>							
			Plain	Transparent				
Ø 60 x 40	membrane	0921 00	-	-	-	-	-	-
Ø 70 x 45	membrane	0921 01	-	-	-	-	-	-
65 x 65 x 40	membrane	0921 04	-	-	-	-	-	-
80 x 80 x 45	none	0921 28	-	-	-	-	-	-
80 x 80 x 45	membrane	0921 26	-	-	-	-	-	-
80 x 80 x 45	knockout	0921 27	-	-	-	-	-	-
105 x 105 x 55	membrane	-	0921 36	-	-	-	-	-
105 x 105 x 55	none	-	0921 38	-	-	-	-	-
105 x 105 x 55	knockout	-	0921 37	-	-	-	-	-
130 x 75 x 74	none	-	0359 00	-	-	0350 07	-	-
130 x 130 x 74	membrane	-	0920 32	-	-	-	0358 10	-
130 x 130 x 74	none	-	0359 30	-	-	0350 13	0358 10	0358 00
155 x 110 x 74	membrane	-	0920 42	-	-	-	0358 11	-
155 x 110 x 74	none	-	0359 40	-	-	0350 17	0358 11	0358 00
180 x 140 x 86	none	-	0359 50	0359 51	-	0350 22	0358 12	0358 00
220 x 170 x 86	none	-	0359 60	0359 61	-	0350 28	0358 13	0358 00
220 x 170 x 140	none	-	-	-	0921 22	-	0350 90	-
265 x 174 x 154	none	-	-	-	0350 43	-	0350 92	-
270 x 170 x 86	none	-	0359 70	0359 71	-	0350 33	0358 14	0358 00
310 x 240 x 124	none	-	0359 80	-	-	0350 44	0358 15	0358 01
310 x 240 x 160	none	-	-	-	0922 84	-	0350 93	-
359 x 265 x 154	none	-	-	-	0350 58	-	0350 94	-
360 x 270 x 124	none	-	0359 90	-	-	0350 47	0358 16	0358 01

Plexo weatherproof boxes

IP 55 - IK 07



Dimensions **opposite**

IP 55 - IK 07
 Grey RAL 7035
 Conform to EN 60695-2-1
 Polystyrene box and polypropylene cover - halogen free
 Temperature rating : -25 °C to +40 °C
 Self-extinguishing 650 °C
 Membrane glands
 Plain cover

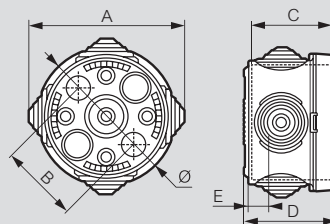
Pack	Cat. Nos.	Weatherproof boxes – round
5	0921 00	With fixing slots for easy alignment Use 5 mm Ø screws Clip-on cover Nominal internal dimensions : Ø x Depth Ø 60 mm x 40 mm 4 glands
5	0921 01	Ø 70 mm x 45 mm 4 glands

Pack	Cat. Nos.	Weatherproof boxes – square
5	0921 04	With fixing slots for easy alignment Use 5 mm Ø screws Clip-on cover Nominal internal dimensions : Height x Width x Depth 65 x 65 x 40 mm 7 glands
5	0921 26	80 x 80 x 45 mm 7 glands
5	0921 27	80 x 80 x 45 mm With pre-cut knockouts

Pack	Cat. Nos.	Weatherproof boxes – square class II
5	0921 36	Mounting by : • either internal fixing points - use 5 mm Ø screws • or at three corners outside the wiring area Use 4 mm Ø screws Provision for anti-tamper seal Cover with 4 x 1/4 turn fixings, indicated I-O, can be retained open during installation Nominal internal dimensions : Height x Width x Depth 105 x 105 x 55 mm 7 glands
5	0921 37	105 x 105 x 55 mm With pre-cut knockouts

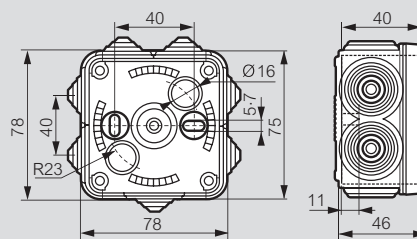
■ Dimensions (mm)

Cat. Nos. 0921 00/01

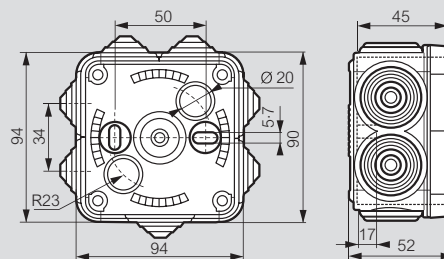


Cat. Nos.	Ø (mm)	A (mm)	B (mm)	C (mm)	D (mm)	E (mm)
0921 00	60	79	40	44.5	40	11
0921 01	70	86	50	49.5	45	11

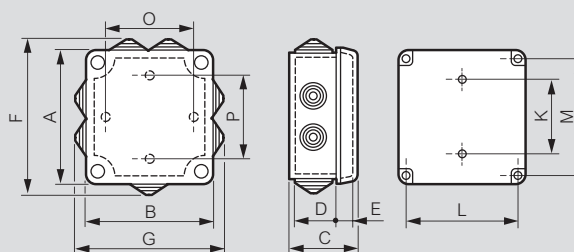
Cat. No. 0921 04



Cat. Nos. 0921 26/27



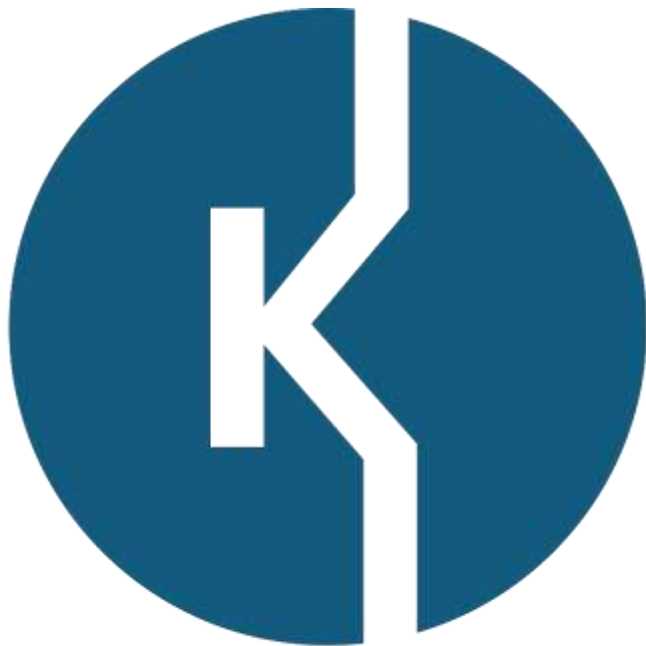
Cat. Nos. 0921 36/37



Cat. Nos.	A	B	F	G	C	D	E	Fixing of box			S dm ²	Fixing of accessories (screw Ø4 mm)	
								K	L	M		O	P
0921 36	116	116	132	132	60	41.8	13.4	50	95	95	1.34	80	80
0921 37	116	116	121	121	60	41.8	13.4	50	95	95	1.34	80	80

Download the full file at

<http://assets.kempstoncontrols.com/doc/Legrand%20Industrial%20and%20power%20protection%20catalogue.pdf>



KEMPSTON
CONTROLS