

According to IEC 60947-3, EN 60947-3, VDE 0660 part 107



Rated Thermal Current $I_U/I_{th}/I_{the}$					
				A	25
Rated Insulation Voltage U_i ¹					
				V	690
Rated Impulse Withstand Voltage U_{imp}					
				kV	4
Rated Operational Current I_e					
AC-21A	Switching of resistive loads, including moderate overloads			A	25
AC-22A	Switching of combined resistive or low inductive loads including moderate overloads		220 V–500 V	A	20
			660 V–690 V		20
Rated Utilization Category					
AC-3	Direct-on-line starting	3 phase, 3 pole	220 V–240 V	kW	4
			380 V–440 V		5,5
			500 V		5,5
			660 V–690 V		5,5
AC-23A	Frequent switching of motors or other high inductive loads	3 phase, 3 pole	220 V–240 V	kW	5,5
			380 V–440 V		7,5
			500 V		7,5
			660 V–690 V		7,5
Short Circuit Protection					
Max. fuse size		gG-characteristic		A	35
Rated short-time withstand current		(1 s-current)		A	350
For connections with insulated ring and fork type cable terminal - copper wires only					
Single-core or stranded wire				mm ²	6
Flexible wire				mm ²	4
Flexible wire with sleeving in accordance with DIN 46228				mm ²	4

¹ Valid for lines with grounded common neutral termination, overvoltage category III, Other values on request.

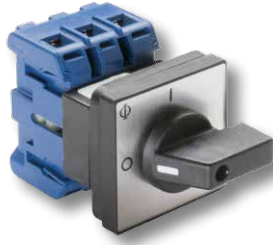
Miscellaneous

Tightening torque of terminal screw:	1,25 Nm (11 lb-in)	
Minimum Voltage:	on request	
Power loss per contact at I_U :	0,7 W	
Resistance to vibration:	min. 4 g, 2-100 Hz, 1,6 mm	
Resistance to shock:	min. 5 g, 6 ms	
Min. Ambient Temperature of Stages:	-5 °C	
Max. Ambient Temperature of Stages:	open at 100 % I_U/I_{th}	50 °C during 24 hours with peaks up to 55 °C
	enclosed at 100 % I_{the}	35 °C during 24 hours with peaks up to 40 °C
Storage temperature:	-40 °C to 85 °C (in case of temperature below -5 °C no shock load permissible)	

Approvals and Standards

IEC 60947 EN 60947			
-----------------------	---	---	--

USA / Canada



Rated Thermal Current I _U /I _{th} /I _{the}						
				A	25	
Rated Insulation Voltage U _i						
				V	600	
Rated Operational Current I _e						
Pilot Duty			Heavy	VAC	A600	
Ampere Rating	Resistive or low inductive loads	ON/OFF 1-0-2	600 V	A	25	
			600 V		25	
Max. Permissible Wire Gage - copper wires only						
Single-core or stranded wire			AWG	10		
Flexible wire: AWG wire (without sleeving)			AWG	10		
Ratings						
	Standard motor load, DOL-Rating (similar AC-3)	3 phase 3 pole	110 V–120 V 220 V–240 V 440 V–480 V 550 V–600 V	HP	1,5 3 5 5	

Miscellaneous

Tightening torque of terminal screw:	1,25 Nm (11 lb-in)	
Minimum Voltage:	on request	
Power loss per contact at I _U :	0,7 W	
Resistance to vibration:	min. 4 g, 2-100 Hz, 1,6 mm	
Resistance to shock:	min. 5 g, 6 ms	
Min. Ambient Temperature of Stages:	-5 °C	
Max. Ambient Temperature of Stages:	open at 100 % I _U /I _{th}	50 °C during 24 hours with peaks up to 55 °C
	enclosed at 100 % I _{the}	35 °C during 24 hours with peaks up to 40 °C
Storage temperature:	-40 °C to 85 °C (in case of temperature below -5 °C no shock load permissible)	

Approvals and Standards

IEC 60947
EN 60947

