

FUSES FOR SEMICONDUCTOR PROTECTION

NORTH AMERICAN AND EUROPEAN STANDARD TYPE SQB


SIZES 1, 2 AND 3



SIBA square body fuses type SQB are available in 3 different body sizes. Each size is available in various mounting styles for global applications. Variety in body sizes, mounting style and amp ratings allow the greatest flexibility in equipment design.

SIBA SQB fuses provide superior engineering for the protection of today's power semiconductors. The silicated process together with special shape and form of the pure silver melting elements give excellent results of low I^2t -values and high interrupting ratings. And they are the most reliable under high cycling load conditions.

All fuses can be fitted with microswitches.

Approvals:	 Recognition
Standards:	DIN 43653 DIN VDE 0636-40 IEC 60269-4 UL 248-13
Class:	aR
Voltage ratings:	AC 700 V / AC 1300 V
Current ratings:	50 up to 1600 A
Sizes:	1, 2 and 3
Tested at:	acc. IEC - $1.1 \times U_n$ acc. UL - $1.0 \times U_n$

Features / Benefits

- ▶ High interrupting rating 200 kA
- ▶ Very low I^2t -values
- ▶ Voltage ratings AC 690/700 V and AC 1250/1300 V
- ▶ Suitable for North American and European standard
- ▶ Reliable also at high cyclic loading
- ▶ Fuse bases and Accessories are available

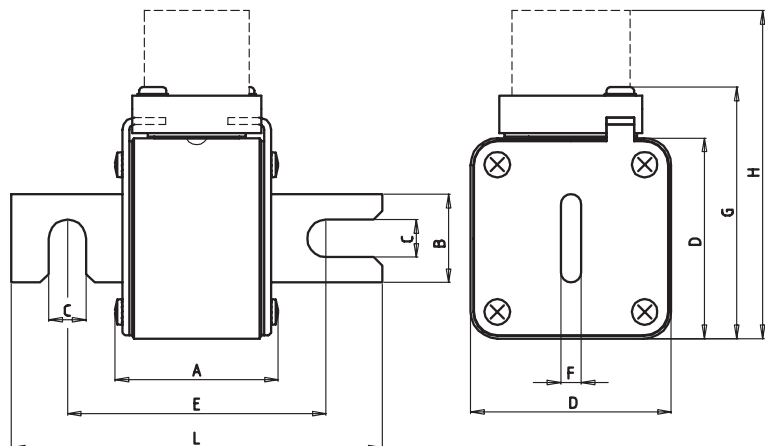


FUSES FOR SEMICONDUCTOR PROTECTION
NORTH AMERICAN AND EUROPEAN STANDARD TYPE SQB

Size **2** Rated voltage **AC 1100-1250/1300 V** Microswitch **fitting** Standard **DIN 43653 / 110 mm fixing**

Rated current	Part No.	UL Rec.	Rated Voltage AC	Weight (kg/100)	Pack
250 A	20 725 32	✓	1250/1300 V	75	2
280 A	20 725 32	✓	1250/1300 V	75	2
315 A	20 725 32	✓	1250/1300 V	75	2
350 A	20 725 32	✓	1250/1300 V	75	2
400 A	20 725 32	✓	1250/1300 V	75	2
450 A	20 725 32	✓	1250/1300 V	75	2
500 A	20 725 32	✓	1250/1300 V	75	2
556 A	20 725 32	✓	1250/1300 V	75	2
630 A	20 725 32	✓	1250/1300 V	75	2
700 A	20 725 32	✓	1100/1200 V	75	2
800 A	20 725 32	✓	1100 V	75	2

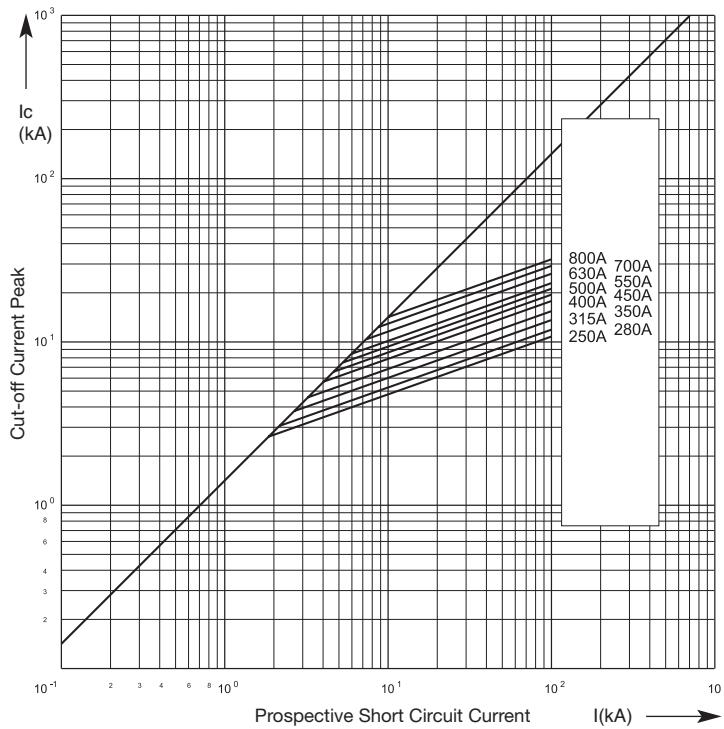
- A 2.78" (70.5 mm)
- B 1.02" (26 mm)
- C 0.43" (11 mm)
- D 2.36" (60 mm)
- E 4.17" (106 mm)
- F 0.24" (6 mm)
- G 2.95" (75 mm)
- H 3.86" (98 mm)
- L 5.43" (138 mm)



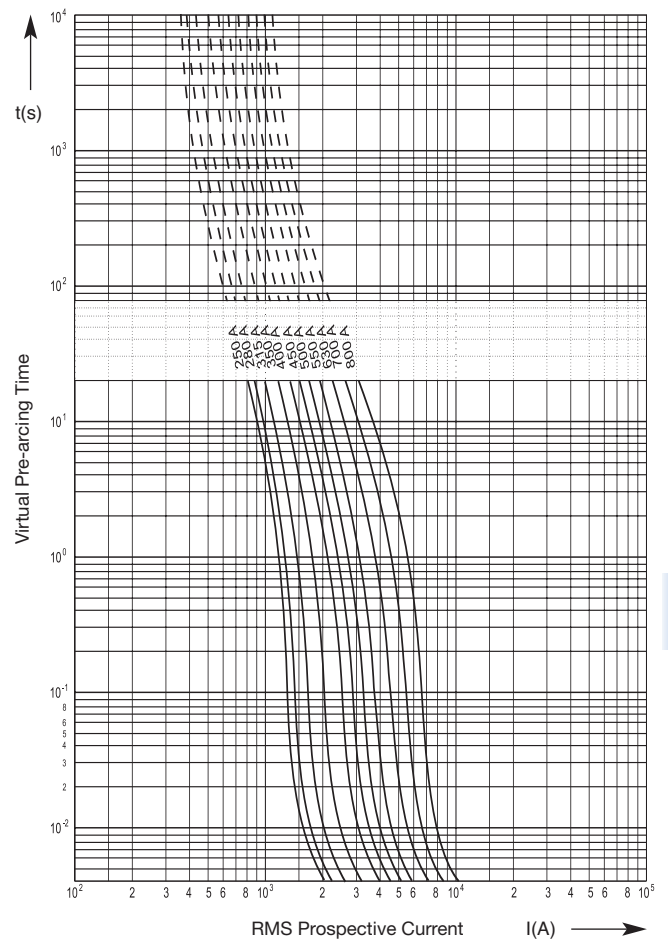
Size 2	Rated voltage AC 1250/1300 V	Operating class aR	Rated breaking capacity 100 kA
-------------------------	---	-------------------------------------	---

Rated current	Rated Voltage U_N IEC 60269-4	Rated Voltage U_N UL 248-13	Power loss W	Pre-arcing I^2t -value A ² s	Total I^2t -value @ 1000 V A ² s
250 A	1250 V	1300 V	55	8,200	45,000
280 A	1250 V	1300 V	59	9,900	56,000
315 A	1250 V	1300 V	66	14,000	78,000
350 A	1250 V	1300 V	71	20,000	110,000
400 A	1250 V	1300 V	75	31,000	170,000
450 A	1250 V	1300 V	80	42,000	240,000
500 A	1250 V	1300 V	90	56,000	310,000
550 A	1250 V	1300 V	105	71,000	350,000
630 A	1250 V	1300 V	110	105,000	540,000
700 A	1100 V	1200 V	115	148,000	710,000
800 A	1100 V	1100 V	123	225,000	1,180,000

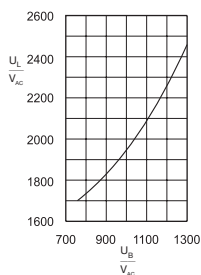
Cut-off-characteristics



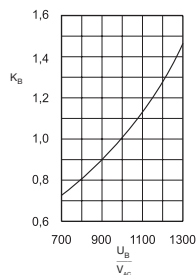
Time / Current Characteristics



Arc voltage-Diagram



Reduction factor for total I²t-value



Reduction factor for power loss

