



OVERLOAD RELAY 18...25 A FOR MOTOR PROTECTION SIZE S3, CLASS 10 FOR CONTACTOR MOUNTING MAIN CIRCUIT: SCREW CONN. AUX. CIRCUIT: SCREW CONN. MANUAL-AUTOMATIC-RESET

Figure similar

product brand name	SIRIUS
Product designation	thermal overload relay
General technical data:	
Size of contactor can be combined company-specific	S3
Active power loss total typical	16.5 W
Insulation voltage	1 000 V
<ul style="list-style-type: none"> with degree of pollution 3 Rated value 	
Surge voltage resistance Rated value	8 kV
Type of assignment	2
Protection class IP	IP20
<ul style="list-style-type: none"> on the front 	
Type of protection	DMT 98 ATEX G 001
Equipment marking	
<ul style="list-style-type: none"> acc. to DIN EN 61346-2 acc. to DIN EN 81346-2 	F F
Ambient conditions:	
Installation altitude at height above sea level maximum	2 000 m
Ambient temperature	
<ul style="list-style-type: none"> during operation during storage during transport 	-20 ... +70 °C -55 ... +80 °C -55 ... +80 °C
Relative humidity during operation	100 %
Main circuit:	

Number of poles for main current circuit	3
Adjustable response value current of the current-dependent overload release	18 ... 25 A
Operating voltage	1 000 V
• at AC-3 Rated value maximum	

Auxiliary circuit:

Number of NC contacts	1
• for auxiliary contacts	
Number of NO contacts	1
• for auxiliary contacts	
Number of CO contacts	0
• for auxiliary contacts	
Operating current of the auxiliary contacts at AC-15	3 A 3 A 3 A 3 A 2 A 1 A
• at 24 V	
• at 110 V	
• at 120 V	
• at 125 V	
• at 230 V	
• at 400 V	
Operating current of the auxiliary contacts at DC-13	1 A 0.22 A 0.22 A 0.11 A
• at 24 V	
• at 110 V	
• at 220 V	

Protective and monitoring functions:

Trip class	CLASS 10
-------------------	----------

Short-circuit:

Design of the fuse link	fuse gL/gG: 6 A, quick: 10 A
• for short-circuit protection of the auxiliary switch required	

Installation/ mounting/ dimensions:

mounting position	with vertical mounting surface +/-135° rotatable, with vertical mounting surface +/- 45° tiltable to the front and back
Mounting type	direct mounting
Height	120 mm
Width	70 mm
Depth	140 mm
Required spacing	
• with side-by-side mounting	
— forwards	
— Backwards	0 mm

— upwards	0 mm
— downwards	0 mm
— at the side	0 mm
• for grounded parts	
— forwards	0 mm
— Backwards	0 mm
— upwards	0 mm
— at the side	6 mm
— downwards	0 mm
• for live parts	
— forwards	0 mm
— Backwards	0 mm
— upwards	0 mm
— downwards	0 mm
— at the side	6 mm

Connections/ Terminals:

Product function	
• removable terminal for auxiliary and control circuit	No
Type of electrical connection	
• for main current circuit	screw-type terminals
• for auxiliary and control current circuit	screw-type terminals
Type of connectable conductor cross-section	
• for main contacts	
— solid	2x (2.5 ... 16 mm ²)
— stranded	2x (10 ... 50 mm ²), 10 ... 70 mm ²
— finely stranded with core end processing	2x (2.5 ... 35 mm ²), 2.5 ... 50 mm ²
• for AWG conductors for main contacts	2x (10 ... 1/0), 1x (10 ... 2/0)
Type of connectable conductor cross-section	
• for auxiliary contacts	
— solid	2x (0.5 ... 1.5 mm ²), 2x (0.75 ... 2.5 mm ²)
— finely stranded with core end processing	2x (0.5 ... 1.5 mm ²), 2x (0.75 ... 2.5 mm ²)
• for AWG conductors for auxiliary contacts	2x (20 ... 16), 2x (18 ... 14)

Mechanical data:

Size of overload relay	S3
-------------------------------	----

Certificates/ approvals:

General Product Approval	For use in hazardous locations	Declaration of Conformity
--------------------------	--------------------------------	---------------------------



CCC



CSA



UL



ATEX



EG-Konf.

Test Certificates	Shipping Approval
-------------------	-------------------

[Special Test Certificate](#)

[Type Test Certificates/Test Report](#)



ABS



BUREAU VERITAS



DNV



GL

Shipping Approval	other
-------------------	-------



LRS



RINA



RMRS

[other](#)

[Environmental Confirmations](#)

Further information

Information- and Downloadcenter (Catalogs, Brochures,...)

<http://www.siemens.com/industrial-controls/catalogs>

Industry Mall (Online ordering system)

<http://www.siemens.com/industrymall>

Cax online generator

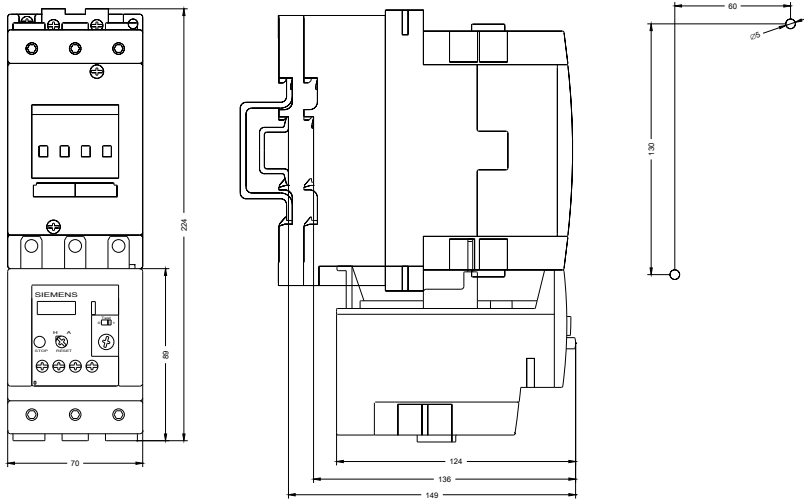
<http://support.automation.siemens.com/WW/CAXorder/default.aspx?lang=en&mfb=3RU11464DB0>

Service&Support (Manuals, Certificates, Characteristics, FAQs,...)

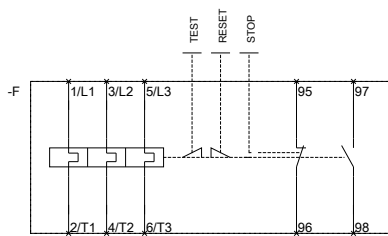
<https://support.industry.siemens.com/cs/ww/en/ps/3RU11464DB0>

Image database (product images, 2D dimension drawings, 3D models, device circuit diagrams, EPLAN macros, ...)

http://www.automation.siemens.com/bilddb/cax_de.aspx?mfb=3RU11464DB0&lang=en



MEBERSCHREZ AIS FUER



QVZREFOABORIECAYGNOR

last modified:

02.06.2015