



BTL7-abcde-Mnnnn-f-lm

BTL7

Magnetostrictive linear position sensor Generation 7

a interface

S = SSI

b Operating voltage

5 = 10 ... 30 V

c Interface characteristic 1

0 = 24 bits, binary, rising
1 = 24 bits, gray, rising
2 = 24 bits, binary, falling
3 = 24 bits, gray, falling
6 = 25 bits, binary, rising
7 = 25 bits, gray, rising
8 = 25 bits, binary, falling
9 = 25 bits, gray, falling
A = 26 bits, binary, rising
B = 26 bits, gray, rising
C = 26 bits, binary, falling
D = 26 bits, gray, falling

d Interface characteristic 2

1 = 1 μm
2 = 5 μm
3 = 10 μm
4 = 20 μm
5 = 40 μm
6 = 100 μm
7 = 2 μm
8 = 50 μm
9 = 0.5 μm

e Interface characteristic 3

B = Synchronous mode
- = Asynchronous mode

Mnnnn Nominal length (4-position)

M0500 = metric in mm
(M0050...M7620)

f Style

P = Profile

l Connection type

S = Connector
KA = Cable (PUR)

m Connection type characteristic 1

for connector:

32 = M16x0.75 connector with 8 pins
115 = M12x1 connector with 8 pins
147 = M16x0.75 connector with 7 pins

for cable (length in meters):

02, 05, 10, 15, 20, 30, 50, 100

Basic features

Approval/Conformity	CE cULus EAC WEEE
Magnets, number (factory setting)	1
Magnets, number max.	cd ≠ 10: 1 cd = 10: 2

Display/Operation

Error value	cd = 10: all bits = 0 d = 1: all bits = 0 d = 7: all bits = 0 d = 9: all bits = 0 otherwise: only bits 2 ²¹ = 1
-------------	----------------------------------------------------------------------------------------------------------------------------------------

Electrical connection

Polarity reversal protected	Ub up to 36 V
Short-circuit protection	to GND and to 36 V DC

Electrical data

Current consumption max. at 24 V DC	100 mA
Inrush current	500 mA / 10 ms
Operating voltage Ub	10...30 VDC
Output signal adjustable	cd ≠ 10: no cd = 10: with software tool
Overvoltage protection	Ub up to 36 V
Switch-on delay max.	nnnn < 1525: 200 ms nnnn ≥ 1525: 600 ms
Voltage-proof up to (GND to housing)	500 V AC

Environmental conditions

Ambient temperature	-40...85 °C
Cable temperature, fixed routing	I = KA: -40 °C ... 90 °C
Cable temperature, flexible routing	I = KA: -5 °C ... 90 °C
EN 55016-2-3, Radiation	For industrial and residential use
EN 60068-2-27, Continuous shock	150 g, 2 ms
EN 60068-2-27, Shock	150 g, 6 ms
EN 60068-2-6, Vibration	20 g, 10...2000 Hz
EN 61000-4-2, ESD	Severity Level 3
EN 61000-4-3, RFI	Severity Level 3
EN 61000-4-4, Burst	Severity Level 3
EN 61000-4-5, Surge	Severity Level 2
EN 61000-4-6, High-frequency fields	Severity Level 3
EN 61000-4-8 Magnetic fields	Severity Level 4
Protection degree	I = S: IP67 with connector I = KA: IP68
Relative humidity	≤ 90 %, non-condensing
Storage temperature	-40...100 °C
Temperature coefficient typ.	≤ 15 ppm/K at 50% of nominal stroke 500mm

Functional safety

MTTF (40 °C)	242 a
--------------	-------

Material

Cable flame-resistant	I = KA: IEC 60332-1
Cable jacket, material	I = KA: PUR
Cover material	Aluminum, Die-cast, nickel plated
Housing material	Aluminum
Housing material, surface protection	Anodized

Mechanical data

Installation length	nnnn + 145 mm
Speed detectable max.	10 m/s

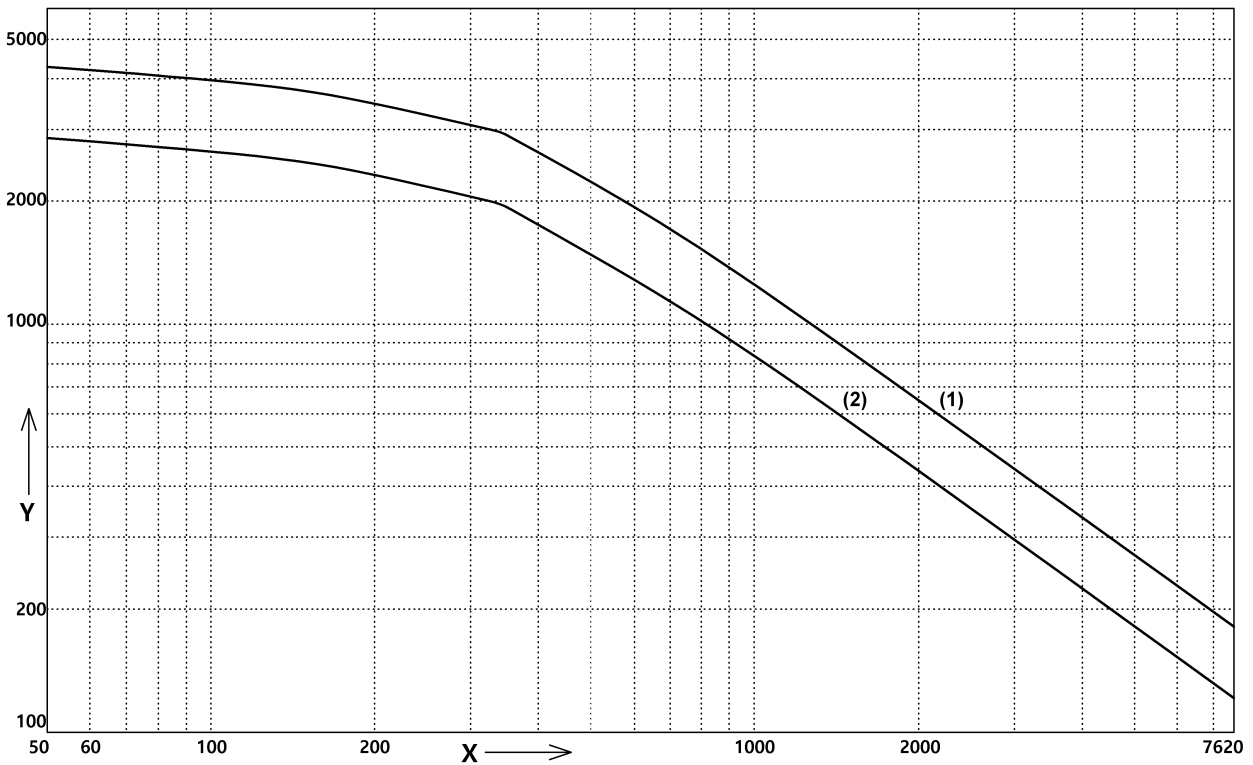
Output/Interface

Interface	SSI
-----------	-----

Range/Distance

Linearity deviation	d = 1, 2, 3, 7, 9: nnnn = 50...5500: ± 30µm d = 4, 5, 6, 8 nnnn = 50...5500: ± 2 LSB nnnn > 5500: ± 0.02% FS
Measuring length	50...7620 mm
Repeat accuracy	≤ ± 5 µm
Sampling frequency max.	See illustration for measuring frequency

Characteristic Diagram



fA,min: 62,5 Hz

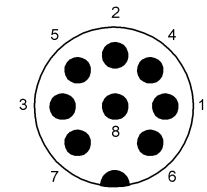
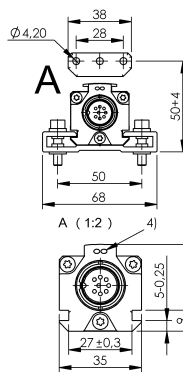
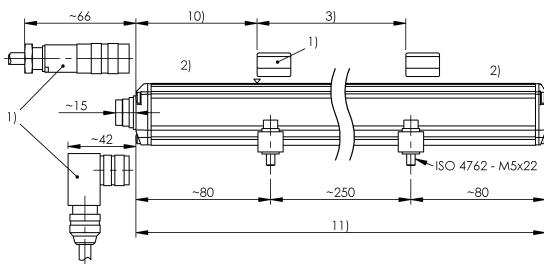
1) 1 magnet

2) 2...16 magnets

x: Nominal length [mm]

y: fA,max Hz

BTL7-S510x-Mxxxx-P-S32



PIN	
1	+Clk
2	+Data
3	-Clk
4	La
5	-Data
6	GND
7	10...30 V DC
8	Lb

1) not included in scope of delivery

2) Non-usable area

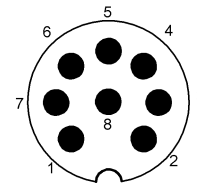
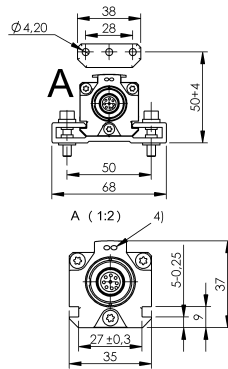
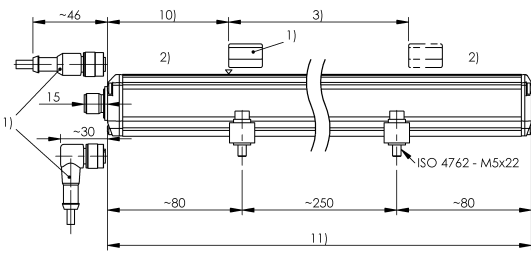
3) Nominal length = Measuring length

4) LED function indicator

10) Null point

11) Installation length

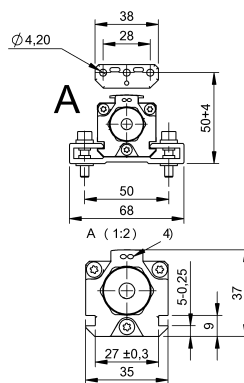
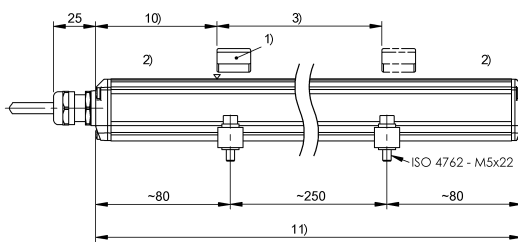
BTL7-S5xxx-Mxxxx-P-S115



PIN	
1	+Clk
2	+Data
3	-Clk
4	NC
5	-Data
6	GND
7	10...30 V DC
8	NC

- 1) not included in scope of delivery
- 2) Non-usable area
- 3) Nominal length = Measuring length
- 4) LED function indicator
- 10) Null point
- 11) Installation length

BTL7-S5xxx-Mxxxx-P-KAxx



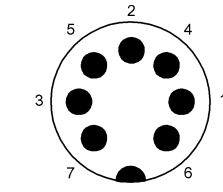
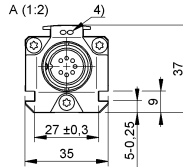
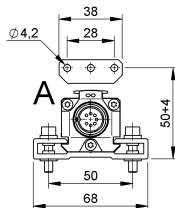
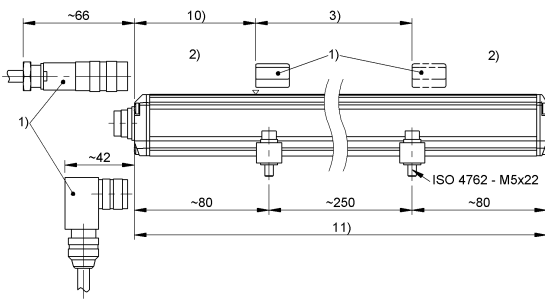
PIN	
YE	+Clk
GY	+Data
PK	-Clk
RD	NC
GN	-Data
BU	GND
BN	10...30 V DC
WH	NC

- 1) not included in scope of delivery
- 2) Non-usable area
- 3) Nominal length = Measuring length
- 4) LED function indicator
- 10) Null point
- 11) Installation length

Magnetostrictive Sensors
BTL7 -P- Series - SSI



BTL7-S5xxx-Mxxxx-P-S147



PIN	
1	-Data
2	+Data
3	+Clk
4	-Clk
5	10...30 V DC
6	GND
7	NC

- 1) not included in scope of delivery
- 2) Non-usable area
- 3) Nominal length = Measuring length
- 4) LED function indicator
- 10) Null point
- 11) Installation length