



## Safe and adaptable power supply for TATA steel Colorcoat® PV Facility

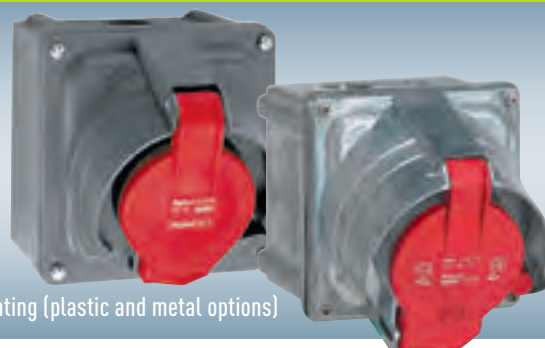
Prisinter sockets and Hypra plugs were specified retrospectively for TATA in a facility which requires machinery to be moved on a regular basis. Machines, originally wired directly to Zucchini tap-offs, are now wired into Hypra plugs, and simply connected and disconnected as required under the safety of Prisinter's interlocked load break switch.

Above:  
Hypra Prisinter socket, Hypra angled plug and Zucchini tap-off

## HYPRA PRISINTER - the choice is yours



Panel mounting (plastic and metal options)



Surface mounting (plastic and metal options)

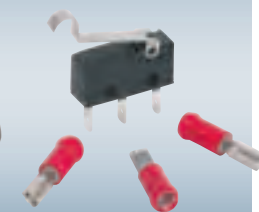
## Related products and accessories



IP44 plugs  
see p. 162 to 167



IP66/67-55 plugs  
see p. 168 to 173



Auxiliary c/o contact work in conjunction with main contacts to provide remote indication and supplementary equipment control  
see p. 156

An innovative answer to safe, secure power connections

# Hypra® Prisinter IP 44/55 - LV 16/32/63 A

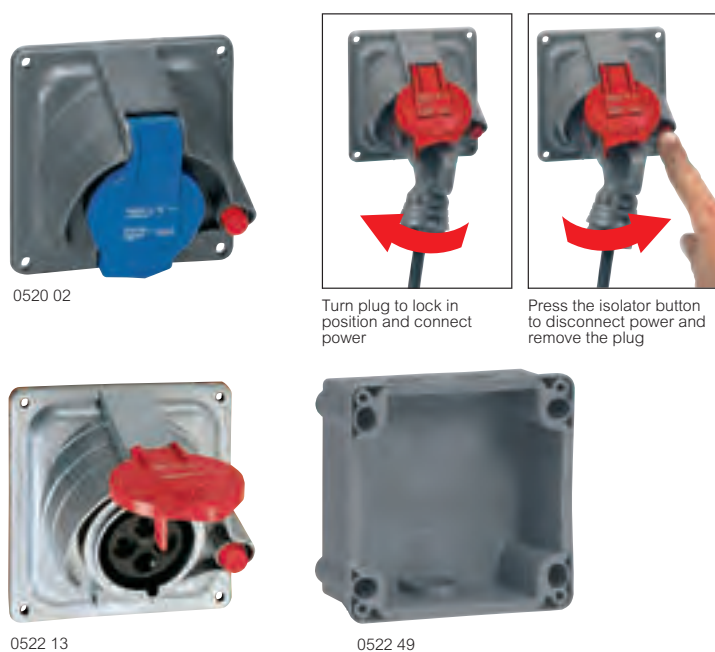
selection chart

HYPRAS® PRISINTER IP 44/55 - LV 16/32/63 A							
<p>Conform to : BS EN 60309-1, BS EN 60309-2, IP 44 when plug inserted IP 54 when used with IP 66/67-55 straight plugs IP 55 with cover closed or used with IP 66/67-55 angled plugs IK 09 (plastic) IK 10 (metal) Self-extinguishing : 960 °C 650 °C for housing Temp. rating : -20 °C to +100 °C</p>		<p>(Back boxes sold separately)</p>			<p>Prisinter</p>		
		Panel mounting sockets		Surface mounting sockets		Auxiliary c/o contact microswitch	
LV		METAL	PLASTIC	METAL	PLASTIC		
100 to 130 V 50/60 Hz	16 A	2 P + ⊥	–	0519 10	–	0519 10+ 0520 49	0521 96
		3 P + ⊥	–	0520 02	–	0520 02+ 0520 49	0521 96
200 to 250 V 50/60 Hz	16 A	3 P + ⊥	–	0520 03	–	0520 03+ 0520 49	0521 96
		3 P + N + ⊥	–	0520 04	–	0520 04+ 0522 49	0521 96
		2 P + ⊥	–	0527 02	–	0527 02+ 0529 49	0521 96
32 A	3 P + ⊥	–	0527 03	–	0527 03+ 0529 49	0521 96	
	3 P + N + ⊥	–	0527 03	–	0527 03+ 0529 49	0521 96	
380 to 415 V 50/60 Hz	16 A	3 P + ⊥	0522 13	0522 03	0522 13+ 0520 59	0522 03+ 0520 49	0521 96
		3 P + N + ⊥	0522 14	0522 04	0522 14+ 0529 59	0522 04+ 0522 49	0521 96
	32 A	3 P + ⊥	0529 13	0529 03	0529 13+ 0522 59	0529 03+ 0529 49	0521 96
		3 P + N + ⊥	0529 14	0529 04	0529 14+ 0522 59	0529 04+ 0529 49	0521 96
	63 A	3 P + ⊥	0538 00	0536 03	0538 00+ 0538 09	0536 03+ 0537 49	0521 96
		3 P + N + ⊥	0538 01	0536 04	0538 01+ 0538 09	0536 04+ 0537 49	0521 96

For pack quantities, see opposite and p. 157

# Hypra® Prisinter IP 44/55 - LV 16 A

interlocked switched sockets



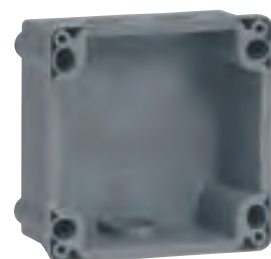
0520 02

Turn plug to lock in position and connect power

Press the isolator button to disconnect power and remove the plug



0522 13



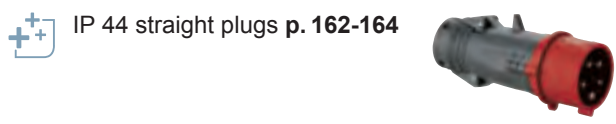
0522 49

Technical information and dimensions p. 158-159  
Conformity to International Standards p. 198

Conform to BS EN 60309-1, BS EN 60309-2  
IP 44 when plug inserted  
IP 54 when used with IP 66/67-55 straight plugs  
IP 55 with cover closed or used with IP 66/67-55 angled plugs  
IK 09 (plastic)  
IK 10 (metal)  
Stainless steel screws  
Brass contacts

Pack	Cat. Nos.		Prisinter panel mounting sockets 16 A
	Metal	Plastic	
1		0519 10	Load break disconnect at the push of the button Accepts Ø6 mm padlock with cover closed Terminals accept 1.5 mm <sup>2</sup> to 4 mm <sup>2</sup> rigid cable (BS EN 60309-1 and IEC 60309-1) Possibility to fit 2 auxiliary C/O contacts Cat. No. 0521 96
1		0520 02	<b>100/130 V</b> ~ 2 P + ⊥
1		0520 03	<b>200/250 V</b> ~ 3 P + ⊥
1		0520 04	3 P + N + ⊥
1	0522 13	0522 03	<b>380/415 V</b> ~ 3 P + ⊥
1	0522 14	0522 04	3 P + N + ⊥

Surface mounting boxes			
Enable Hypra Prisinter panel mounting sockets to be surface mounted Reversible entry box with 3 x M20 entries with 2 blanking plugs plus rear knockout entries			
1	Metal 0520 59	Plastic 0520 49	For 2 P + ⊥ / 3 P + ⊥ sockets For 3 P + N + ⊥ sockets
1	0529 59	0522 49	



Download the full file at

<http://assets.kempstoncontrols.com/doc/Legrand%20Industrial%20and%20power%20protection%20catalogue.pdf>



**KEMPSTON**  
CONTROLS