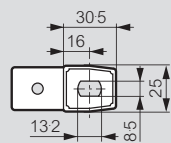


# Marina wall mounting enclosures

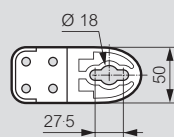
Polyester (GRP) IP 66 - IK 10 (continued)

## Wall mounting brackets

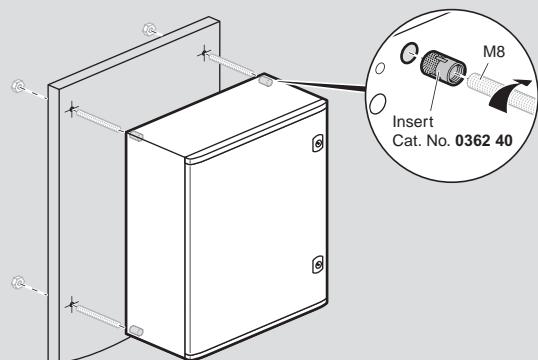
Cat. No. 0364 08  
for enclosures height 300 mm



Cat. No. 0364 09  
for enclosures height ≥ 400 mm



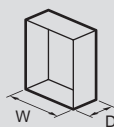
## Wall fixing by threaded rods



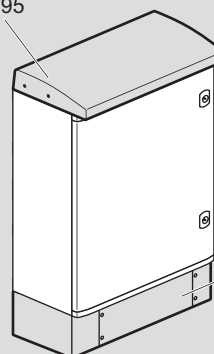
## Floor fixing on plinth

H 170 mm (polyester RAL 7035)

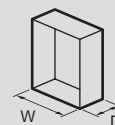
Roof RAL 7035  
Cat. Nos. 0362 93/94/95



| W (mm) | D (mm) |
|--------|--------|
| 500    | 250    |
| 600    | 300    |
| 800    | 300    |



Plinth  
Cat. Nos. 0362 91/92



| W (mm) | D (mm) |
|--------|--------|
| 600    | 300    |
| 800    | 300    |

# Marina free standing enclosures and equipment

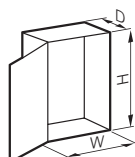
Polyester (GRP) IP 66 - IK 10



Technical information and dimensions **p. 22**  
 Locking accessories **p. 28**  
 Ventilation and heating **p. 29-31**

Grey RAL 7035  
 IP 66 according to IEC EN 60529  
 IK 10 according to IEC EN 62262 (EN 50102)  
 Class II insulation for final assembly according to IEC EN 60439-1  
 Glass fibre reinforced polyester (GRP) enclosures  
 Self extinguishing at 960 °C according to IEC EN 60695-2-11  
 Designed for corrosive environments  
 Stainless steel hinges and hinge pins  
 Reversible door equipped with equipment mounting bosses  
 Supplied with two part gland plate and fixing kit for plain plate or sectioned uprights  
 Three point locking handle with European lock and 2433 A key<sup>1</sup>  
 Depth adjustment of equipment

| Pack | Cat. Nos. | GRP enclosures           |       |                  |             |  |
|------|-----------|--------------------------|-------|------------------|-------------|--|
|      |           | External dimensions (mm) |       |                  | Weight (kg) |  |
|      |           | Height                   | Width | Depth            |             |  |
| 1    | 0362 85   | 1460                     | 800   | 463 <sup>2</sup> | 49          |  |
| 1    | 0362 86   | 1660                     | 800   | 463 <sup>2</sup> | 53          |  |
| 1    | 0362 87   | 1860                     | 800   | 463 <sup>2</sup> | 57          |  |



| Pack | Cat. Nos. | Roof                |       |
|------|-----------|---------------------|-------|
|      |           | For enclosures (mm) |       |
|      |           | Width               | Depth |
| 1    | 0362 97   | 800                 | 463   |

| Pack | Cat. Nos. | Plinth              |       |
|------|-----------|---------------------|-------|
|      |           | For enclosures (mm) |       |
|      |           | Width               | Depth |
| 1    | 0362 96   | 800                 | 463   |

Height 170 mm  
 Front and rear access plates  
 Stackable for extra height (2 max)

| Pack | Cat. Nos. | Equipment                                                                                   |       |                 |
|------|-----------|---------------------------------------------------------------------------------------------|-------|-----------------|
|      |           | Plain plates                                                                                |       |                 |
|      |           | Galvanised steel. Premarked at 100 mm intervals<br>Permissible load : 200 kg/m <sup>2</sup> |       |                 |
|      |           | For enclosures (mm)                                                                         |       | Net weight (kg) |
|      |           | Height                                                                                      | Width |                 |
| 1    | 0349 59   | 1460                                                                                        | 800   | 27              |
| 1    | 0349 50   | 1660                                                                                        | 800   | 30.5            |
| 1    | 0344 18   | 1860                                                                                        | 800   | 34              |

| Pack | Cat. Nos. | Sectioned uprights |             |
|------|-----------|--------------------|-------------|
|      |           | For enclosures     |             |
|      |           | Height (mm)        | Length (mm) |
| 1    | 0363 90   | 1460               | 1284        |
| 1    | 0363 91   | 1660               | 1484        |
| 1    | 0363 92   | 1860               | 1684        |

For Lina 25 rail, Lina rail and Lina 12.5 or Lina 25 plates  
 Set of 2 uprights galvanised steel

1 : Other barrels **p. 28**  
 2 : 487 mm when handle in use

Download the full file at

<http://assets.kempstoncontrols.com/doc/Legrand%20Industrial%20and%20power%20protection%20catalogue.pdf>



**KEMPSTON**  
CONTROLS