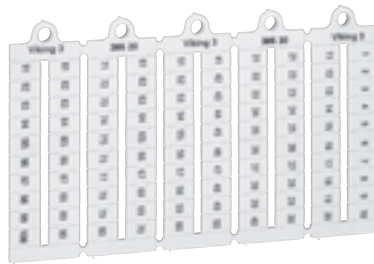


## marking label sheets

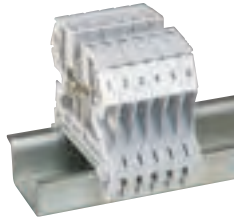
for Viking 3 terminal blocks



0395 20



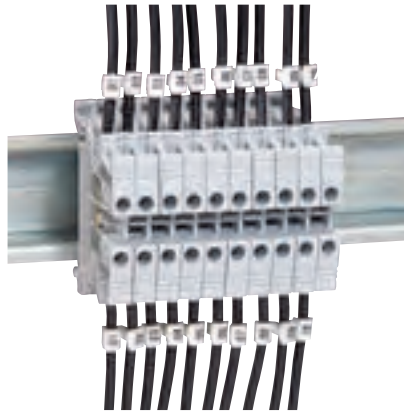
0395 98



0395 05 on Viking 3 terminal blocks

## CAB 3<sup>®</sup> marking system

for cables and Viking 3 terminal blocks



Same markers for cable and terminal blocks

Strips of 20 markers  
For cables or Viking 3 terminal blocks

Technical information p. 143

| Pack | Cat. Nos. | Blank markers   |
|------|-----------|---|
| 1000 | 0395 00   | Displayed by sheet of 100 pre-cut markers               |
| 1000 | 0395 01   | Manual marking with black felt tip pen Cat. No. 0395 98 |
| 1000 | 0395 02   | For blocks 5 mm width                                   |
|      |           | For blocks 6 mm width                                   |
|      |           | For blocks 8 mm width                                   |

### Pre-printed markers – numbers

| Horizontal format |         |                          |
|-------------------|---------|--------------------------|
| Width of 5 mm     |         |                          |
| 1000              | 0395 05 | From 1 to 10 (10 times)  |
| 1000              | 0395 06 | From 11 to 20 (10 times) |
| 1000              | 0395 09 | From 1 to 50 (2 times)   |
| 1000              | 0395 10 | From 1 to 100            |
| Width of 6 mm     |         |                          |
| 1000              | 0395 15 | From 1 to 10 (10 times)  |
| 1000              | 0395 16 | From 11 to 20 (10 times) |
| 1000              | 0395 19 | From 1 to 50 (2 times)   |
| 1000              | 0395 20 | From 1 to 100            |
| 1000              | 0395 21 | From 101 to 200          |

### Black felt tip pen

|    |         |                  |
|----|---------|------------------|
| 10 | 0395 98 | Permanent marker |
|----|---------|------------------|

| Pack | Cat. Nos. | Markers for cables 1.5 to 2.5 mm <sup>2</sup> cross section and terminal blocks |
|------|-----------|---|
| 240  | 0381 60   | Numbers : black on white background   |
|      |           | 01 to 20  |
| 240  | 0381 61   | 21 to 40  |
| 240  | 0381 62   | 41 to 60  |
| 240  | 0381 63   | 61 to 80  |

Viking 3 terminal blocks  
p. 118-135



# CAB 3® marking system

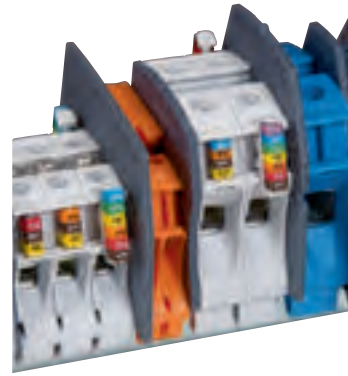
for cables and Viking 3 terminal blocks (continued)



Perfect alignment of markers



0382 12



Terminal blocks with CAB 3 markers and label holders

Technical information p. 143

| Pack* | Cat. Nos. |         | Markers for cables 0-15 to 0-5 mm <sup>2</sup> and 0-5 to 1-5 mm <sup>2</sup> cross section and terminal blocks             |  |
|-------|-----------|---------|---|--|
|       |           |         | On Viking 3 terminal blocks<br>- 4 markers 0-15 to 0-5 mm <sup>2</sup> max.<br>- 3 markers 0-15 to 1-5 mm <sup>2</sup> max. |  |
|       |           |         | <b>Digits : international colour code</b>   |  |
| 1 000 | 1 200     | 0381 00 | 0382 10   | 0  |
| 1 000 | 1 200     | 0381 01 | 0382 11   | 1  |
| 1 000 | 1 200     | 0381 02 | 0382 12   | 2  |
| 1 000 | 1 200     | 0381 03 | 0382 13   | 3  |
| 1 000 | 1 200     | 0381 04 | 0382 14   | 4  |
| 1 000 | 1 200     | 0381 05 | 0382 15   | 5  |
| 1 000 | 1 200     | 0381 06 | 0382 16   | 6  |
| 1 000 | 1 200     | 0381 07 | 0382 17   | 7  |
| 1 000 | 1 200     | 0381 08 | 0382 18   | 8  |
| 1 000 | 1 200     | 0381 09 | 0382 19   | 9  |
|       |           |         |   | <b>Letters : black on yellow background</b>              |
| 300   | 0381 10   | 0383 00 |   | A  |
| 300   | 0381 11   | 0383 01 |   | B  |
| 300   | 0381 12   | 0383 02 |   | C  |
| 300   | 0381 13   | 0383 03 |   | D  |
| 300   | 0381 14   | 0383 04 |   | E  |
| 300   | 0381 15   | 0383 05 |   | F  |
| 300   | 0381 16   | 0383 06 |   | G  |
| 300   | 0381 17   | 0383 07 |   | H  |
| 300   | 0381 18   | 0383 08 |   | I  |
| 300   | 0381 19   | 0383 09 |   | J  |
| 300   | 0381 20   | 0383 10 |   | K  |
| 300   | 0381 21   | 0383 11 |   | L  |
| 300   | 0381 22   | 0383 12 |   | M  |
| 300   | 0381 23   | 0383 13 |   | N  |
| 300   | 0381 24   | 0383 14 |   | O  |
| 300   | 0381 25   | 0383 15 |   | P  |
| 300   | 0381 26   | 0383 16 |   | Q  |
| 300   | 0381 27   | 0383 17 |   | R  |
| 300   | 0381 28   | 0383 18 |   | S  |
| 300   | 0381 29   | 0383 19 |   | T  |
| 300   | 0381 30   | 0383 20 |   | U  |
| 300   | 0381 31   | 0383 21 |   | V  |
| 300   | 0381 32   | 0383 22 |   | W  |
| 300   | 0381 33   | 0383 23 |   | X  |
| 300   | 0381 34   | 0383 24 |   | Y  |
| 300   | 0381 35   | 0383 25 |   | Z  |
|       |           |         |   | <b>Conventional symbols : black on yellow background</b> |
| 300   | 0381 40   | 0382 70 |   | /  |
| 300   | 0381 41   | 0382 71 |   | •  |
| 300   | 0381 42   | 0382 72 |   | +  |
| 300   | 0381 43   | 0382 73 |   | -  |
| 300   | 0381 44   | 0382 74 |   | ~  |
| 300   |           | 0382 75 |   | ≡  |
| 300   |           | 0382 76 |   | ⊕  |

| Pack* | Cat. Nos. |         | Markers for cables 1-5 to 2-5 mm <sup>2</sup> and 4 to 6 mm <sup>2</sup> cross section |  |
|-------|-----------|---------|--|--|
|       |           |         |  | <b>Digits : international colour code</b>                |
| 1 200 | 800       | 0382 20 | 0382 30  | 0  |
| 1 200 | 800       | 0382 21 | 0382 31  | 1  |
| 1 200 | 800       | 0382 22 | 0382 32  | 2  |
| 1 200 | 800       | 0382 23 | 0382 33  | 3  |
| 1 200 | 800       | 0382 24 | 0382 34  | 4  |
| 1 200 | 800       | 0382 25 | 0382 35  | 5  |
| 1 200 | 800       | 0382 26 | 0382 36  | 6  |
| 1 200 | 800       | 0382 27 | 0382 37  | 7  |
| 1 200 | 800       | 0382 28 | 0382 38  | 8  |
| 1 200 | 800       | 0382 29 | 0382 39  | 9  |
|       |           |         |  | <b>Letters : black on yellow background</b>              |
| 300   | 0383 30   | 0383 60 |  | A  |
| 300   | 0383 31   | 0383 61 |  | B  |
| 300   | 0383 32   | 0383 62 |  | C  |
| 300   | 0383 33   | 0383 63 |  | D  |
| 300   | 0383 34   | 0383 64 |  | E  |
| 300   | 0383 35   | 0383 65 |  | F  |
| 300   | 0383 36   | 0383 66 |  | G  |
| 300   | 0383 37   | 0383 67 |  | H  |
| 300   | 0383 38   | 0383 68 |  | I  |
| 300   | 0383 39   | 0383 69 |  | J  |
| 300   | 0383 40   | 0383 70 |  | K  |
| 300   | 0383 41   | 0383 71 |  | L  |
| 300   | 0383 42   | 0383 72 |  | M  |
| 300   | 0383 43   | 0383 73 |  | N  |
| 300   | 0383 44   | 0383 74 |  | O  |
| 300   | 0383 45   | 0383 75 |  | P  |
| 300   | 0383 46   | 0383 76 |  | Q  |
| 300   | 0383 47   | 0383 77 |  | R  |
| 300   | 0383 48   | 0383 78 |  | S  |
| 300   | 0383 49   | 0383 79 |  | T  |
| 300   | 0383 50   | 0383 80 |  | U  |
| 300   | 0383 51   | 0383 81 |  | V  |
| 300   | 0383 52   | 0383 82 |  | W  |
| 300   | 0383 53   | 0383 83 |  | X  |
| 300   | 0383 54   | 0383 84 |  | Y  |
| 300   | 0383 55   | 0383 85 |  | Z  |
|       |           |         |  | <b>Conventional symbols : black on yellow background</b> |
| 300   | 0382 80   | 0382 90 |  | /  |
| 300   | 0382 81   | 0382 91 |  | •  |
| 300   | 0382 82   | 0382 92 |  | +  |
| 300   | 0382 83   | 0382 93 |  | -  |
| 300   | 0382 84   | 0382 94 |  | ~  |
| 300   | 0382 85   | 0382 95 |  | ≡  |
| 300   | 0382 86   | 0382 96 |  | ⊕  |

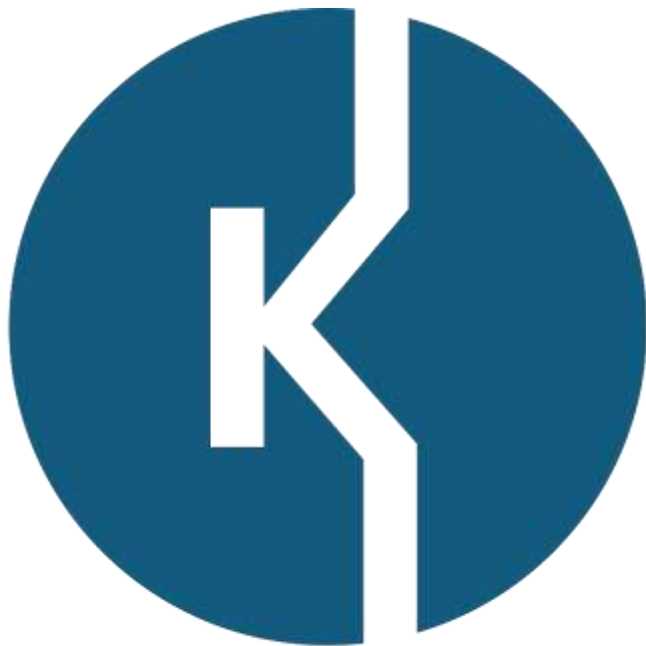
1 : Up to 0-5 mm<sup>2</sup>: strips of 25 markers  
From 0-5 mm<sup>2</sup> to 2-5 mm<sup>2</sup>: strips of 30 markers  
Upper 2-5 mm<sup>2</sup>: strips of 20 markers

CAB 3 accessories p. 142  
Viking 3 terminal blocks p. 118-135



Download the full file at

<http://assets.kempstoncontrols.com/doc/Legrand%20Industrial%20and%20power%20protection%20catalogue.pdf>



**KEMPSTON**  
CONTROLS