



### T4V7H 355-12Z

- Metal enclosure
- 66,7 mm x 76 mm x 38 mm
- only for positioning tasks
- Mounting details to EN 50041
- Switching points to EN 50041
- 3 cable entries lateral M 20 x 1.5
- Wide range of alternative actuators
- Good resistance to oil and petroleum spirit
- Actuator heads can be repositioned by 4 x 90°

## Data

### Ordering data

Product type description	T4V7H 355-12Z
Article number (order number)	101173081
EAN (European Article Number)	4030661302027
eCl@ss number, Version 9.0	27-27-06-01

### Certifications

Certificates	cULus EAC
--------------	--------------

### General data

Product name	T 355 roller lever 7H
Housing construction form	Norm construction design
Enclosure material	Aluminium
Enclosure coating material	Painted
Material of the contacts, electrical	Silver
Lever material	Metal film
Roller material	Plastic
Gross weight	335 g

### General data - Features

Number of auxiliary contacts	1
Number of safety contacts	2

### Safety appraisal

Standards	BG-GS-ET-15 ISO 13849-1 EN 60947-5-1
Mission Time	20 Year(s)

### Safety appraisal - Safety outputs

B10d Normally-closed contact (NC)	20,000,000 Operations
-----------------------------------	-----------------------

### Mechanical data

Actuating element	Roller lever
Mechanical life, minimum	30,000,000 Operations
Actuating speed, maximum	2.5 m/s
Note (Actuating speed)	Actuating speed with actuating angle 30° to switch axis
Note (Switchover time)	Switchover time in accordance with actuating speed
Actuating torque, minimum	0.31 Nm

#### **Mechanical data - Connection technique**

Terminal Connector	Screw connection
Cable section, minimum	0.75 mm <sup>2</sup>
Cable section, maximum	2.5 mm <sup>2</sup>
Note (Cable section)	All indications about the cable section are including the conductor ferrules.

#### **Mechanical data - Dimensions**

Height of sensor	183 mm
Length of sensor	57.25 mm
Width of sensor	40.5 mm

#### **Ambient conditions**

Protection class	IP67
Ambient temperature, minimum	-30 °C
Ambient temperature, maximum	+80 °C

#### **Ambient conditions - Insulation value**

Rated impulse withstand voltage	4 kV
---------------------------------	------

#### **Electrical data**

Thermal test current	10 A
Required rated short-circuit current to EN 60947-5-1	1,000 A
Utilisation category AC-15	230 VAC
Utilisation category AC-15	4 A
Utilisation category DC-13	24 VDC
Utilisation category DC-13	4 A
Switching element	NO contact, NC contact
Switching principle	Slow action
Bounce duration, maximum	2 ms
Switching frequency	5,000 /h

#### **Ordering code**

Product type description:

(1)(2) 3(3)5-(4)Z(5)-(6)-(7)-(8)-(9)

(1)

**Z** Snap action  
**T** Slow action

(2)

**S** Plunger S

**R** Roller plunger R  
**H** Roller lever H  
**10H** Rod lever 10H  
**7H** Roller lever 7H  
**1K** Offset roller lever 1K  
**3K** Angle roller lever 3K  
**RMS** Brass roller

(3)

**3** slim design  
**5** large design

(4)

**11** 1 NO contacts/1 NC contact  
**02** 2 NC contact  
**20** 2 NO contacts (not suitable for safety applications)  
**01/01** 1 NC contact left / 1 NC contact right  
**12** 1 NO contact/2 NC contacts  
**03** 3 NC contact

(5)

**H** Slow action with staggered contacts  
**UE** Slow action with overlapping contacts

(6)

**G24** with LED

(7)

**without** Cable entry M20  
**NPT** Cable entry NPT 1/2"  
**ST** M12 connector with A-coding (Caution! According to EN 60204-1, the versions with connector must only be used in PELV circuits.)  
**ST-2310** M12 connector with B-coding (Caution! According to EN 60204-1, the versions with connector must only be used in PELV circuits.)

(8)

**2138** Roller lever 7H for position switches with safety function

(9)

**1637** Gold-plated contacts

## Pictures

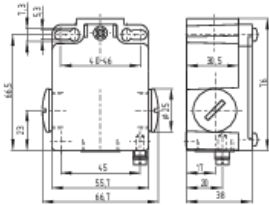
### Product picture (catalogue individual photo)

ID: k355hf02

| 483,4 kB | .jpg | 188.383 x 369.358 mm - 534 x 1047 Pixel - 72 dpi  
 | 179,8 kB | .jpg | 26.649 x 52.216 mm - 320 x 627 Pixel - 305 dpi  
 | 98,9 kB | .png | 74.083 x 144.992 mm - 210 x 411 Pixel - 72 dpi



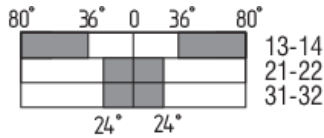
### Dimensional drawing basic component



ID: 1x355g01

| 32,9 kB | .cdr |  
 | 33,1 kB | .jpg | 112.889 x 78.317 mm - 320 x 222 Pixel - 72 dpi  
 | 10,6 kB | .png | 74.083 x 51.506 mm - 210 x 146 Pixel - 72 dpi  
 | 132,5 kB | .jpg | 352.778 x 245.181 mm - 1000 x 695 Pixel - 72 dpi

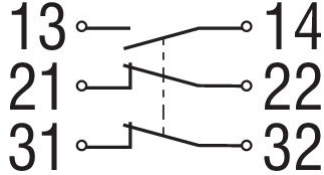
### Switch travel diagram



ID: kh335s22

| 25,9 kB | .cdr |  
 | 2,1 kB | .png | 74.083 x 29.986 mm - 210 x 85 Pixel - 72 dpi  
 | 19,2 kB | .jpg | 112.889 x 45.508 mm - 320 x 129 Pixel - 72 dpi

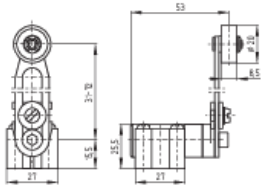
### Diagram



ID: k2o1sk02

| 18,4 kB | .cdr |  
 | 25,2 kB | .jpg | 112.889 x 61.736 mm - 320 x 175 Pixel - 72 dpi

### Dimensional drawing actuator



ID: 1h355g02

| 104,9 kB | .jpg | 352.778 x 243.769 mm - 1000 x 691 Pixel - 72 dpi  
 | 30,2 kB | .cdr |  
 | 9,6 kB | .png | 74.083 x 51.153 mm - 210 x 145 Pixel - 72 dpi

K.A. Schmersal GmbH & Co. KG, Mödinghofe 3, D-42279 Wuppertal

The details and data referred to have been carefully checked. Images may diverge from original. Further technical data can be found in the manual. Technical amendments and errors possible.

Generated on 07.06.2020 14:06:10