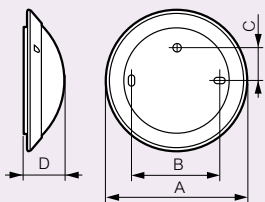


bulkhead lights

Decorative bulkhead lights

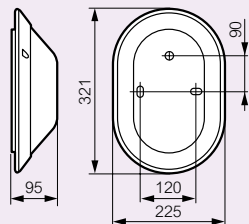
For exterior use

Cat.Nos 0 620 00/01/03/06/20



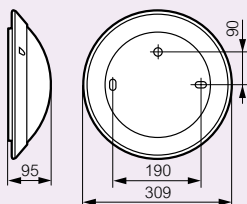
	A	B	C	D
Size 1	296	190	90	95
Size 1	340	240	95	110

Cat.Nos 0 620 30/34/36



For interior use

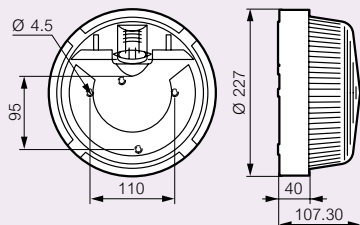
Cat.No 0 621 90



Weatherproof bulkhead lights

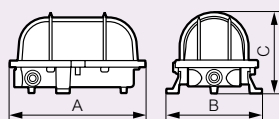
Round - IP 44 - IK 07

Cat.Nos 0 604 50/51/58/59



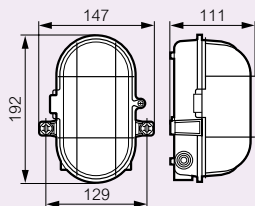
Oval - IP 44 - IK 06

Cat.Nos 0 604 15/16/05/92



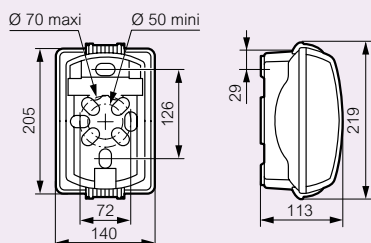
Cat.Nos	A	B	C
0 604 92	178	126	108
0 604 05	178	126	108
0 604 15	169	126	106
0 604 14	175	126	105

Cat.No 0 604 19



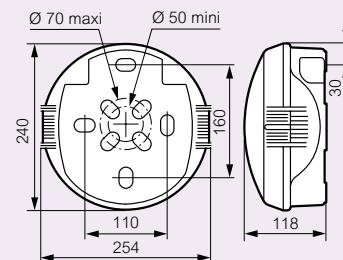
Plexo rectangular - IP 54 - IK 08

Cat.Nos 0 624 00/02



Koro round - IP 54 - IK 08

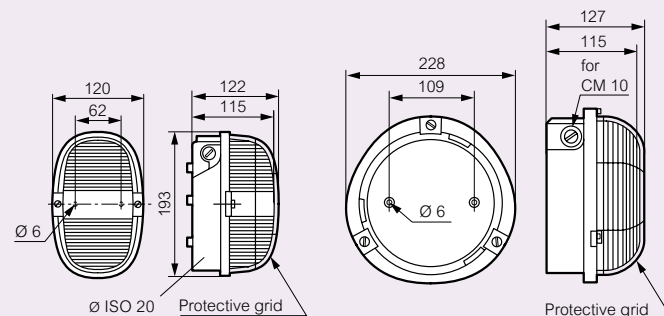
Cat.Nos 0 624 25/26



For tough environment

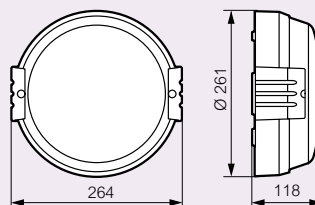
Cat.Nos 0 604 77, 0 605 08

Cat.Nos 0 604 83, 0 605 09

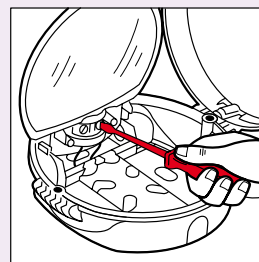


Vandal - resistant bulkhead lights

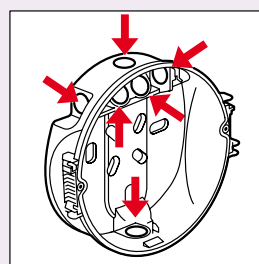
Cat.No 0 624 15



Koro bulkhead lights have multiple access points and can be wired without removing the plate
A distinct advantage when one finds oneself 3 m from the ground



The articulated plate swivels and enables direct wiring while retaining the option of connection outside the bulkhead lamp



Total accessibility with 6 knock-out cable entries
Several power supply methods (tube with Plexo end cap Ø20) or DLP mini-trunking 32 x 20 with Plexo adaptor
Power supply cables way through at the rear, outside of the enclosure