



Pack	Cat. Nos.	Accessories
<b>Blanking plates</b>		
10	7300 95	1 gang - 86 x 86 mm
10	7300 96	2 gang - 86 x 146 mm
<b>LED packs</b>		
Relevant Synergy functions are designed to accept the LED packs for fitting at time of installation or retrospectively by a qualified person Compatible with fluorescent loads		
10	7301 58	Electronic LED locator pack – green diodes : max. current 0.2 mA provides illumination to locate function such as switches in low light
10	7300 58	Electronic LED power indicator pack – red diodes : nominal current 2 mA provides indication of 'power on' condition in such functions as sockets and control switches
<b>Outlet plate - VDI/low voltage</b>		
10	7300 52	1 gang - 86 x 86 mm with cable clamp and outlet gland
<b>Contrast frames</b>		
Aid Part M compliance when using Synergy White wiring accessories		
10	8218 46	1 gang contrast frame
10	8218 47	2 gang contrast frame
<b>Accessory frames</b>		
10	7300 53	1 gang - 86 x 86 x 11 mm with bottom cord outlet For flush to wall external cord connection suitable for use with 13 A and 20 A control switches and other relevant 86 x 86 mm functions Integral cord grip
10	7301 95	1 gang - 86 x 86 x 7 mm spacer frame
5	7301 96	2 gang - 86 x 146 x 7 mm spacer frame
<b>Spare screw cap covers</b>		
10	7301 53	Pack of 50 caps to cover mounting screws

Grid selection charts **p. 64-65**  
Grid modules **p. 61-63**  
Arteur modules [www.legrand.co.uk](http://www.legrand.co.uk)

Pack	Cat. Nos.	Euro module front plates
Suitable for use with standard 25 x 50 mm euro data module inserts		
10	7300 99	1 gang - 86 x 86 mm
10	7301 00	2 modules - aperture size 50 x 50 mm
10	7301 00	2 gang - 86 x 146 mm 4 modules - aperture size 50 x 100 mm

Pack	Cat. Nos.	Carrier plates for Arteur, Nuvo or Vantage modules (square)
No additional support frame required Enable a Synergy installation to benefit from additional functionality, such as international sockets and to match audio and lighting systems with wiring accessories		
10	7300 91	1 gang - 86 x 86 mm 1 module
10	7300 92	1 gang - 86 x 86 mm 2 modules
10	7300 93	2 gang - 86 x 146 mm 3 modules
10	7300 94	2 gang - 86 x 146 mm 4 modules

Pack	Cat. Nos.	1 and 2 gang front plates for grid modules
Must be used with support frames, see below		
10	7301 91	1 gang - 86 x 86 mm 1 small aperture module
10	7301 92	1 gang - 86 x 86 mm 2 small aperture modules
10	7301 93	2 gang - 86 x 146 mm 3 small aperture modules
10	7301 94	2 gang - 86 x 146 mm 4 small aperture modules

Pack	Cat. Nos.	1 and 2 gang support frames for grid modules
10	7354 90	1 gang 1 module
10	7354 91	1 gang 2 modules
10	7354 92	2 gang 3/4 modules

## surface mounting moulded back boxes

## flush mounting steel back boxes



7364 06



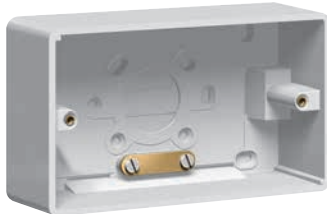
7364 07



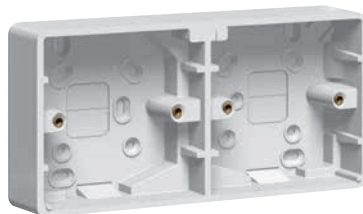
0891 10



0891 13



7364 11



7364 13




0891 11

### Pack Cat. Nos. Surface mounting moulded boxes - thermoset

Conform to BS 5733  
Material : white thermoset  
Mini trunking knockouts located around periphery of boxes

Dimensions : 1 gang - 87 x 87 mm  
2 gang - 87 x 147 mm

#### Depth 16 mm

10 7364 03  1 gang  
With earth terminal

#### Depth 35 mm

10 7364 06  1 gang

5 7364 10  2 gang

5 7364 13  2 x 1 gang

#### Depth 47 mm

10 7364 07  1 gang

5 7364 11  2 gang

### Architrave back boxes

#### Depth 30 mm


10 7364 05  Dimensions : 86 x 36 mm

5 7364 04  Dimensions : 146 x 36 mm

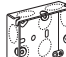
### Pack Cat. Nos. Flush mounting back boxes - steel

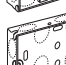
Conform to BS 4662  
Material : galvanised steel  
Top, side and back knockout entries according to type of box

#### Depth 16 mm


100 0891 09  1 gang with 1 fixed lug, 1 adjustable lug and 1 earth terminal

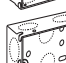
#### Depth 25 mm

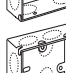
50 0891 10  1 gang with 3 fixed lugs, 1 adjustable lug and 1 earth terminal

10 0891 11  2 gang with 1 fixed lug, 1 adjustable lug and 1 earth terminal

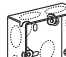
#### Depth 35 mm

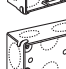
50 0891 13  1 gang with 3 fixed lugs, 1 adjustable lug and 1 earth terminal

40 0891 14  2 gang with 1 fixed lug, 1 adjustable lug and 1 earth terminal

40 0891 40  Dual box with 2 earth terminals  
Accepts 2 single gang accessories

#### Depth 48 mm

25 0891 17  1 gang with 3 fixed lugs, 1 adjustable lug and 1 earth terminal

20 0891 18  2 gang with 1 fixed lug, 1 adjustable lug and 1 earth terminal

### Architrave back boxes

#### Depth 26 mm

5 7364 40  Dimensions : 82 x 28 mm

5 7364 41  Dimensions : 142 x 28 mm

Download the full file at

<http://assets.kempstoncontrols.com/doc/Synergy%20Wiring%20Accessories.pdf>



**KEMPSTON**  
CONTROLS