

Synergy® traditional switches and dimmers



7330 00



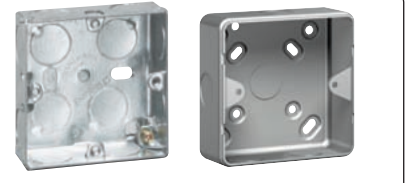
7332 02



7330 46



7332 47



Flush and surface mounting back boxes p. 187



7330 06



7332 07



7330 09



7332 09

Brushed stainless steel front plates : brushed stainless steel with clear epoxy satin lacquer coating
 Polished stainless steel front plates : electroplated stainless steel plate with trivalent chrome for mirror finish
 White interiors and rockers
 Terminal screws captive and backed off ready for cabling

Pack	Cat. Nos.		Single pole plate switches 10 AX - 250 V~	
	Stainless steel		Conform to BS EN 60669-1 : 2000	
	Brushed	Polished	Flush mounting back box : min. 16 mm deep Nominal plate dimensions : 1, 2 and 3 gang - 86 x 86 mm 4 and 6 gang - 86 x 146 mm	
1	7330 00	7332 00		1 gang - 1 way
1	7330 01	7332 01		1 gang - 2 way
1	7330 05	7332 05		1 gang - intermediate
1	7330 02	7332 02		2 gang - 2 way
1	7330 03	7332 03		3 gang - 2 way
1	7330 04	7332 04		4 gang - 2 way
1	7330 06	7332 06		6 gang - 2 way

Pack	Cat. Nos.		Single pole plate switches 20 AX - 250 V~	
	Stainless steel		Conform to BS EN 60669-1 : 2000	
	Brushed	Polished	Flush mounting back box : min. 25 mm deep Nominal plate dimensions : 86 x 86 mm	
1	7331 31	7333 31		1 gang - 2 way
1	7331 32	7333 32		2 gang - 2 way
1	7331 33	7333 33		3 gang - 2 way

Pack	Cat. Nos.		Single pole push switches 10 A - 250 V~	
	Stainless steel		Conform to BS EN 60669-1 : 2000	
	Brushed	Polished	Flush mounting back box : min. 16 mm deep Nominal plate dimensions : 86 x 86 mm	
1	7330 07	7332 07		1 gang - 2 way push switch

Pack	Cat. Nos.		Dimmer units - 230 V~	
	Stainless steel		Conform to BS EN 60669-2-1 : 2000 and BS EN 55015	
	Brushed	Polished	Not suitable for fluorescent load Flush mounting back box : min. 25 mm deep Nominal plate dimensions : 86 x 86 mm	
1	7330 46	7332 46		1 gang - 2 way 50 Hz 40 W-250 W push on/off rotary
1	7330 47	7332 47		2 gang - 2 way 50 Hz 40 W-250 W push on/off rotary

Pack	Cat. Nos.		Dimmer units - 230 V~ - electronic type	
	Stainless steel		Conform to BS EN 60669-2-1 : 2000 and BS EN 55015	
	Brushed	Polished	Not suitable for fluorescent load Flush mounting back box : min. 25 mm deep Nominal plate dimensions : 86 x 86 mm	
1	7331 56	7333 56		1 gang - 2 way 50-60 Hz 40 W-400 W push on/off rotary
1	7331 57	7333 57		2 gang - 2 way 50-60 Hz 40 W-400 W push on/off rotary

Pack	Cat. Nos.		3 pole fan switches 10 A - 250 V~	
	Stainless steel		Conform to BS EN 60669-1 : 2000	
	Brushed	Polished	With integrated padlockable safety block in OFF position Flush mounting back box : min. 25 mm deep Nominal plate dimensions : 86 x 86 mm	
1	7330 09	7332 09		3 pole fan switch

Synergy® traditional socket outlets



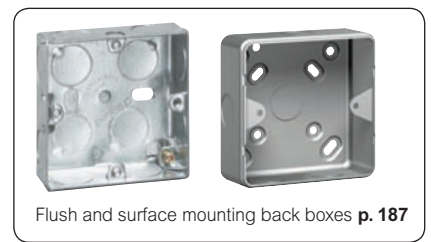
7330 70



7332 61



7330 97



Flush and surface mounting back boxes p. 187



7330 71



7332 74



7330 89



7332 59



Red LED power indicator

Brushed stainless steel front plates : brushed stainless steel with clear epoxy satin lacquer coating
 Polished stainless steel front plates : electroplated stainless steel plate with trivalent chrome for mirror finish
 White interiors and rockers
 Terminal screws captive and backed off ready for cabling

Pack	Cat. Nos.		Double pole socket outlets 13 A - 250 V~	
	Stainless steel Brushed Polished		Conform to BS 1363 - Part 2 : 1995 2 earth terminals Flush mounting back box : min. 25 mm deep Nominal plate dimensions : 1 gang - 86 x 86 mm 2 gang - 86 x 146 mm	
1	7330 60	7332 60		1 gang – switched
1	7330 61	7332 61		1 gang – switched + red LED power indicator
1	7330 70	7332 70		2 gang – switched
1	7330 71	7332 71		2 gang – switched + red LED power indicator
1	7330 74	7332 74		2 gang – switched outboard for standard and clean earth applications

Pack	Cat. Nos.		Unswitched socket outlets 13 A - 250 V~	
	Stainless steel Brushed Polished		Conform to BS 1363 - Part 2 : 1995 2 earth terminals Flush mounting back box : min. 25 mm deep Nominal plate dimensions : 1 gang - 86 x 86 mm 2 gang - 86 x 146 mm	
1	7330 65	7332 65		1 gang – unswitched
1	7330 75	7332 75		2 gang – unswitched

Pack	Cat. Nos.		Key switched socket 13 A - 250 V~	
	Stainless steel Brushed Polished		Conform to BS 1363 - part 2 : 1995 Flush mounting back box : min. 35 mm deep Nominal plate dimensions : 86 x 146 mm	
1	8200 71	8200 72		2 gang single socket with DP key switch

Pack	Cat. Nos.		RCD sockets 13 A - 250 V~	
	Stainless steel Brushed Polished		Conform to BS 7288 : 1990 and BS 1363 - Part 2 : 1995 Conventional earth pin release shutter Maximum operating current 16 A Incorporate a "test and reset" button Flush mounting back box : min. 25 mm deep Nominal plate dimensions : 86 x 146 mm Active (electronically latched) - trips in the event of a power failure - suitable in applications where automatic restoration of supply would be hazardous, e.g. machinery, power tools	
1	7330 97	7332 97		RCD unit 2 gang DP 30 mA active
	Stainless steel Brushed Polished		Passive (mechanically latched) - does not trip in the event of a power failure - suitable in applications where automatic restoration of supply is required, e.g. fridge, freezer, unmanned areas	
1	7330 98	7332 98		RCD unit 2 gang DP 30 mA passive

Pack	Cat. Nos.		Socket outlets 15 A - 250 V~	
	Stainless steel Brushed Polished		Conform to BS 546 : 1950 Flush mounting back box : min. 35 mm deep Nominal plate dimensions : 86 x 86 mm	
1	7330 88	7332 88		1 gang – unswitched
1	7330 89	7332 89		1 gang – switched

Pack	Cat. Nos.		Socket outlets 2 A - 250 V~	
	Stainless steel Brushed Polished		Conform to BS 546 : 1950 Flush mounting back box : min. 25 mm deep Nominal plate dimensions : 86 x 86 mm	
1	7330 59	7332 59		1 gang – unswitched

Download the full file at

<http://assets.kempstoncontrols.com/doc/Legrand%20Wiring%20Devices%202012.pdf>



KEMPSTON
CONTROLS