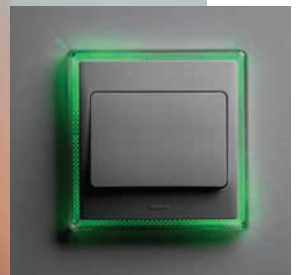


CLIPPER

a fresh look

for a much
loved classic



Marrying smooth curves with a slim profile and no visible screws, Legrand's Clipper range has a simple, understated appearance.

Its larger rocker, contrast colour frames and neon surrounds make it the ideal choice for assisted living installations and to aid with Part M compliance.



Clipper large rocker switches



Conform to BS EN 60669-1
 Front plates : polycarbonate
 Dimensions : 86.5 x 86.5 x 10.5 mm
 Flush mounting back box : min. 25 mm deep

Pack	Cat. Nos.	Single pole large rocker plate switches 10 AX - 250 V~
10 4	2810 01 2810 08	1 gang – 2 way 1 gang – 2 way intermediate
10	2810 03	2 gang – 2 way
10	2810 05	3 gang – 2 way

Pack	Cat. Nos.	Single pole large rocker push switch 10 AX - 250 V~
10	2810 41	1 gang – 2 way push switch

Pack	Cat. Nos.	Accessories
1	2819 08	Silver surround frame
1	1200	Neon surround frame

flush mounting steel back boxes



Pack	Cat. Nos.	Flush mounting back boxes
Conform to BS 4662 Material : galvanised steel Top, side and back knockout entries according to type of box		
Depth 16 mm		
100	0891 09	1 gang with 1 fixed lug, 1 adjustable lug and 1 earth terminal
Depth 25 mm		
50	0891 10	1 gang with 3 fixed lugs, 1 adjustable lug and 1 earth terminal
10	0891 11	2 gang with 1 fixed lug, 1 adjustable lug and 1 earth terminal
Depth 35 mm		
50	0891 13	1 gang with 3 fixed lugs, 1 adjustable lug and 1 earth terminal
40	0891 14	2 gang with 1 fixed lug, 1 adjustable lug and 1 earth terminal
40	0891 40	Dual box with 2 earth terminals Accepts 2 single gang accessories
Depth 48 mm		
25	0891 17	1 gang with 3 fixed lugs, 1 adjustable lug and 1 earth terminal
20	0891 18	2 gang with 1 fixed lug, 1 adjustable lug and 1 earth terminal

Pack	Cat. Nos.	Architrave back boxes
Depth 26 mm		
5	7364 40	Dimensions : 82 x 28 mm
5	7364 41	Dimensions : 142 x 28 mm

Download the full file at

<http://assets.kempstoncontrols.com/doc/Wiring%20Accessories%20Product%20Guide.pdf>



KEMPSTON
CONTROLS