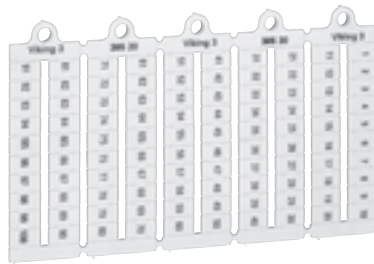


marking label sheets

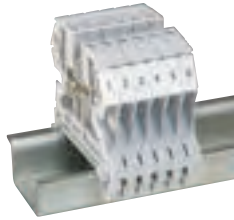
for Viking 3 terminal blocks



0395 20



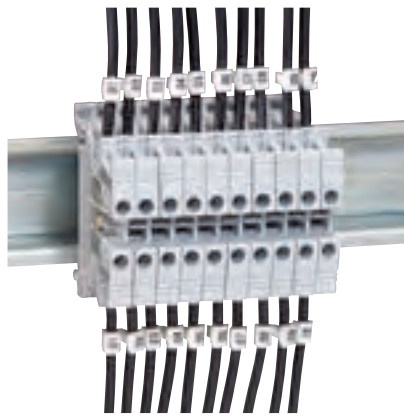
0395 98



0395 05 on Viking 3 terminal blocks

CAB 3[®] marking system

for cables and Viking 3 terminal blocks



Same markers for cable and terminal blocks

Strips of 20 markers
For cables or Viking 3 terminal blocks

Technical information p. 143

| Pack | Cat. Nos. | Blank markers |
|------|-----------|---|
| 1000 | 0395 00 | Displayed by sheet of 100 pre-cut markers |
| 1000 | 0395 01 | Manual marking with black felt tip pen Cat. No. 0395 98 |
| 1000 | 0395 02 | For blocks 5 mm width |
| | | For blocks 6 mm width |
| | | For blocks 8 mm width |

Pre-printed markers – numbers

| Horizontal format | | |
|-------------------|---------|--------------------------|
| Width of 5 mm | | |
| 1000 | 0395 05 | From 1 to 10 (10 times) |
| 1000 | 0395 06 | From 11 to 20 (10 times) |
| 1000 | 0395 09 | From 1 to 50 (2 times) |
| 1000 | 0395 10 | From 1 to 100 |
| Width of 6 mm | | |
| 1000 | 0395 15 | From 1 to 10 (10 times) |
| 1000 | 0395 16 | From 11 to 20 (10 times) |
| 1000 | 0395 19 | From 1 to 50 (2 times) |
| 1000 | 0395 20 | From 1 to 100 |
| 1000 | 0395 21 | From 101 to 200 |

Black felt tip pen

| | | |
|----|---------|------------------|
| 10 | 0395 98 | Permanent marker |
|----|---------|------------------|

| Pack | Cat. Nos. | Markers for cables 1.5 to 2.5 mm ² cross section and terminal blocks |
|------|-----------|---|
| 240 | 0381 60 | Numbers : black on white background |
| | | 01 to 20 |
| 240 | 0381 61 | 21 to 40 |
| 240 | 0381 62 | 41 to 60 |
| 240 | 0381 63 | 61 to 80 |

Viking 3 terminal blocks
p. 118-135



CAB 3® marking system

for cables and Viking 3 terminal blocks (continued)



Perfect alignment of markers



0382 12



Terminal blocks with CAB 3 markers and label holders

Technical information p. 143

| Pack* | Cat. Nos. | | Markers for cables 0-15 to 0-5 mm ² and 0-5 to 1-5 mm ² cross section and terminal blocks | |
|-------|-----------|---------|---|--|
| | | | On Viking 3 terminal blocks - 4 markers 0-15 to 0-5 mm ² max. - 3 markers 0-15 to 1-5 mm ² max. | |
| | | | Digits : international colour code | |
| 1 000 | 1 200 | 0381 00 | 0382 10 | 0 |
| 1 000 | 1 200 | 0381 01 | 0382 11 | 1 |
| 1 000 | 1 200 | 0381 02 | 0382 12 | 2 |
| 1 000 | 1 200 | 0381 03 | 0382 13 | 3 |
| 1 000 | 1 200 | 0381 04 | 0382 14 | 4 |
| 1 000 | 1 200 | 0381 05 | 0382 15 | 5 |
| 1 000 | 1 200 | 0381 06 | 0382 16 | 6 |
| 1 000 | 1 200 | 0381 07 | 0382 17 | 7 |
| 1 000 | 1 200 | 0381 08 | 0382 18 | 8 |
| 1 000 | 1 200 | 0381 09 | 0382 19 | 9 |
| | | | | Letters : black on yellow background |
| 300 | 0381 10 | 0383 00 | | A |
| 300 | 0381 11 | 0383 01 | | B |
| 300 | 0381 12 | 0383 02 | | C |
| 300 | 0381 13 | 0383 03 | | D |
| 300 | 0381 14 | 0383 04 | | E |
| 300 | 0381 15 | 0383 05 | | F |
| 300 | 0381 16 | 0383 06 | | G |
| 300 | 0381 17 | 0383 07 | | H |
| 300 | 0381 18 | 0383 08 | | I |
| 300 | 0381 19 | 0383 09 | | J |
| 300 | 0381 20 | 0383 10 | | K |
| 300 | 0381 21 | 0383 11 | | L |
| 300 | 0381 22 | 0383 12 | | M |
| 300 | 0381 23 | 0383 13 | | N |
| 300 | 0381 24 | 0383 14 | | O |
| 300 | 0381 25 | 0383 15 | | P |
| 300 | 0381 26 | 0383 16 | | Q |
| 300 | 0381 27 | 0383 17 | | R |
| 300 | 0381 28 | 0383 18 | | S |
| 300 | 0381 29 | 0383 19 | | T |
| 300 | 0381 30 | 0383 20 | | U |
| 300 | 0381 31 | 0383 21 | | V |
| 300 | 0381 32 | 0383 22 | | W |
| 300 | 0381 33 | 0383 23 | | X |
| 300 | 0381 34 | 0383 24 | | Y |
| 300 | 0381 35 | 0383 25 | | Z |
| | | | | Conventional symbols : black on yellow background |
| 300 | 0381 40 | 0382 70 | | / |
| 300 | 0381 41 | 0382 71 | | • |
| 300 | 0381 42 | 0382 72 | | + |
| 300 | 0381 43 | 0382 73 | | - |
| 300 | 0381 44 | 0382 74 | | ~ |
| 300 | | 0382 75 | | ≡ |
| 300 | | 0382 76 | | ⊕ |

| Pack* | Cat. Nos. | | Markers for cables 1-5 to 2-5 mm ² and 4 to 6 mm ² cross section | |
|-------|-----------|---------|--|--|
| | | | | Digits : international colour code |
| 1 200 | 800 | 0382 20 | 0382 30 | 0 |
| 1 200 | 800 | 0382 21 | 0382 31 | 1 |
| 1 200 | 800 | 0382 22 | 0382 32 | 2 |
| 1 200 | 800 | 0382 23 | 0382 33 | 3 |
| 1 200 | 800 | 0382 24 | 0382 34 | 4 |
| 1 200 | 800 | 0382 25 | 0382 35 | 5 |
| 1 200 | 800 | 0382 26 | 0382 36 | 6 |
| 1 200 | 800 | 0382 27 | 0382 37 | 7 |
| 1 200 | 800 | 0382 28 | 0382 38 | 8 |
| 1 200 | 800 | 0382 29 | 0382 39 | 9 |
| | | | | Letters : black on yellow background |
| 300 | 0383 30 | 0383 60 | | A |
| 300 | 0383 31 | 0383 61 | | B |
| 300 | 0383 32 | 0383 62 | | C |
| 300 | 0383 33 | 0383 63 | | D |
| 300 | 0383 34 | 0383 64 | | E |
| 300 | 0383 35 | 0383 65 | | F |
| 300 | 0383 36 | 0383 66 | | G |
| 300 | 0383 37 | 0383 67 | | H |
| 300 | 0383 38 | 0383 68 | | I |
| 300 | 0383 39 | 0383 69 | | J |
| 300 | 0383 40 | 0383 70 | | K |
| 300 | 0383 41 | 0383 71 | | L |
| 300 | 0383 42 | 0383 72 | | M |
| 300 | 0383 43 | 0383 73 | | N |
| 300 | 0383 44 | 0383 74 | | O |
| 300 | 0383 45 | 0383 75 | | P |
| 300 | 0383 46 | 0383 76 | | Q |
| 300 | 0383 47 | 0383 77 | | R |
| 300 | 0383 48 | 0383 78 | | S |
| 300 | 0383 49 | 0383 79 | | T |
| 300 | 0383 50 | 0383 80 | | U |
| 300 | 0383 51 | 0383 81 | | V |
| 300 | 0383 52 | 0383 82 | | W |
| 300 | 0383 53 | 0383 83 | | X |
| 300 | 0383 54 | 0383 84 | | Y |
| 300 | 0383 55 | 0383 85 | | Z |
| | | | | Conventional symbols : black on yellow background |
| 300 | 0382 80 | 0382 90 | | / |
| 300 | 0382 81 | 0382 91 | | • |
| 300 | 0382 82 | 0382 92 | | + |
| 300 | 0382 83 | 0382 93 | | - |
| 300 | 0382 84 | 0382 94 | | ~ |
| 300 | 0382 85 | 0382 95 | | ≡ |
| 300 | 0382 86 | 0382 96 | | ⊕ |

1 : Up to 0-5 mm²: strips of 25 markers
From 0-5 mm² to 2-5 mm²: strips of 30 markers
Upper 2-5 mm²: strips of 20 markers

CAB 3 accessories p. 142
Viking 3 terminal blocks p. 118-135



Download the full file at

<http://assets.kempstoncontrols.com/doc/Legrand%20Industrial%20and%20power%20protection%20catalogue.pdf>



KEMPSTON
CONTROLS