

Multiple Level Switch LS-400E (1-4 switch points)

MULTI POINT

Max. contact loads of the reed switch:
SPST 50 VA; 0.5 A; 250 VAC (NC/NO).
SPDT 10VA; 0.3A; 100 Vdc
(Higher voltage on request).
The data NC/NO are defined for an empty tank.

Specifications

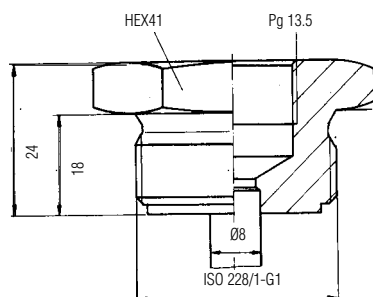
Materials		
Stem	Brass	Stainless Steel
Mounting type	Brass	Stainless Steel
Float	Buna N	Stainless Steel
Operating pressure	10 bar	20 bar
Float temperature*	-20°C ... +80°C Water -20°C ... +110°C Oil	-20°C ... +150°C
Min. specific gravity of the liquid	0.46 g/cm ³	0.85 g/cm ³
Depth of immersion at a density of 1	~9mm	~21mm
Protection rating	IP65 (IP64 for Potted Cable/Leads)	

Mounting Direction

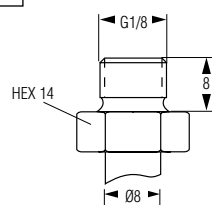
Tank top : 0 Bottom : U

Mounting Type

TM/TC

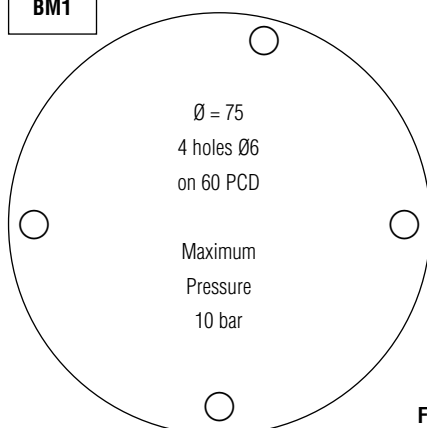


CM/CC

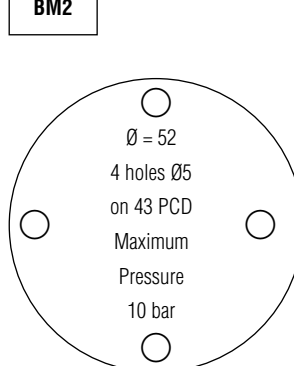


Available with potted cable/leads only.

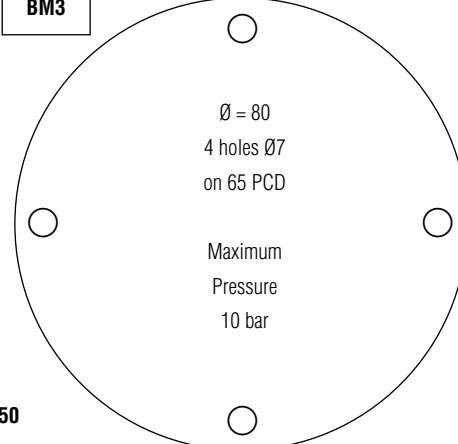
BM1



BM2



BM3



Flanges are only available with DIN 43650 Connector or Potted Cable/Leads.

Flange thickness = 5mm

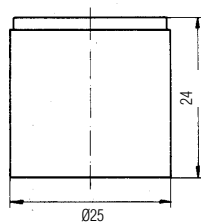
Standard flanges shown

Other flanges available for OEM applications.

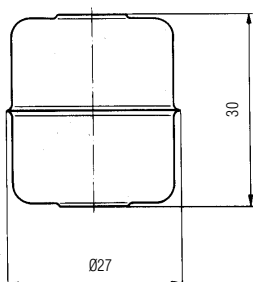


LEVEL SWITCHES

Floats



N = Buna N

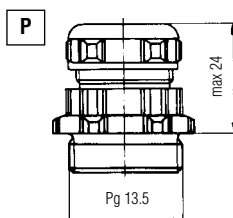


C = Stainless Steel

Electrical Connection

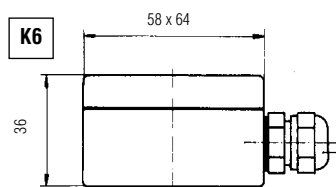
Pg 13.5 Cable gland

Cable (PVC=0.34mm² or 0.25mm²)
standard length appr. 1m;
Temperature: -20 ... +80°C



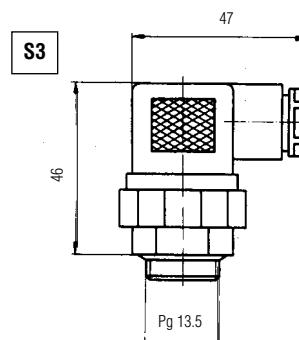
Terminal box 6-poles

Temperature: -20 ... +150°C



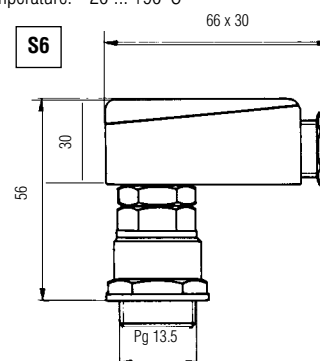
Plug connector acc. DIN 43650

3 poles + earth
Temperature: -20 ... +90°C



Plug connector acc. DIN 43651

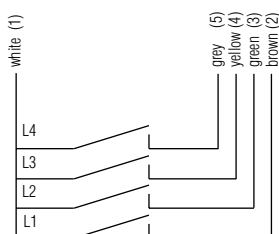
6 poles + earth
Temperature: -20 ... +90°C



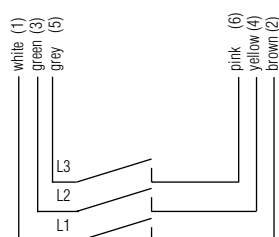
Switching Groups

(Pin correlation of the plug connectors)

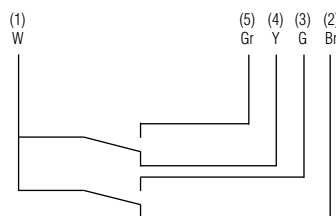
Group 1



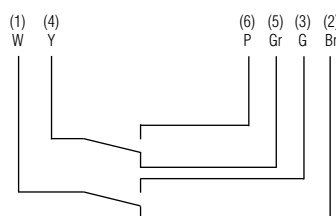
Group 2



Group 3



Group 4



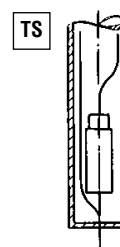
Temperature Switch

For large or OEM applications the LS-400E may be fitted with a temperature switch.

It is installed at the lower end of the stem and reduces the number of switch points by one.

Maximum Rating 2A, 120Vac, 2A, 24Vdc.

For full specification contact your sales office.



LS-400E Multiple Level Switch check list

MULTI POINT

LEVEL SWITCHES

(Please copy and use as order form)

Customer: _____

Order no.: _____ Quantity: _____

Application specific data:

(Please complete fully and accurately)

1. Medium _____

2. Pressure (bar): Min _____ Max _____

3. Temperature (°C): Min _____ Max _____

4. Specific gravity (g/cm3): _____ Min _____ Max _____

5. Viscosity (SSU): _____

6. Tank: Material _____ Depth _____

7. Connection periphery (eg relay, PLC,.....): _____

LS-400E - 1 2 3 4 5 6

1. Mounting direction:	Through tank top	<input type="checkbox"/>	O
	Through tank bottom	<input type="checkbox"/>	U
2. Mounting Type	Brass	<input type="checkbox"/>	TM
Tank screw:	Stainless Steel	<input type="checkbox"/>	TC
Flange ø75:	Brass	<input type="checkbox"/>	BM1*
ø52:	Brass	<input type="checkbox"/>	BM2*
ø80:	Brass	<input type="checkbox"/>	BM3*
Put in Plug G1/8:	Brass	<input type="checkbox"/>	CM
	Stainless Steel	<input type="checkbox"/>	CC
No Mounting	Brass Stem	<input type="checkbox"/>	OM
	Stainless Steel	<input type="checkbox"/>	OC
3. Floats:	Buna N	<input type="checkbox"/>	N
	Stainless Steel	<input type="checkbox"/>	C
4. Electrical connection:	Plug connector DIN 43650	<input type="checkbox"/>	S3
	max. switch points Group 1=2, Group 2=1		
	Plug connector DIN 43651	<input type="checkbox"/>	S6*
	Cable and gland	<input type="checkbox"/>	P*
	Potted Cable	<input type="checkbox"/>	VC
	Potted Leads	<input type="checkbox"/>	VL
	Terminal box 6-poles	<input type="checkbox"/>	K6*
5. Switching group:	Group 1	<input type="checkbox"/>	1
	Group 2	<input type="checkbox"/>	2
	Group 3 (10VA, 0.3A, 100Vdc)	<input type="checkbox"/>	3
	Group 4 (10VA, 0.3A, 100Vdc)	<input type="checkbox"/>	4
6. Options:	Bent Stem	<input type="checkbox"/>	BS
	Temperature Switch	<input type="checkbox"/>	TS

*S6, P, K6 not available with flange options BM1, 2 and 3

Please specify each non listed part:.....

.....

.....

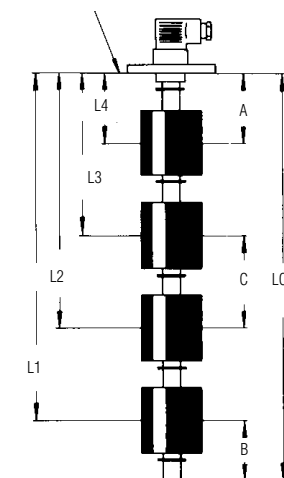
.....

Dimensions

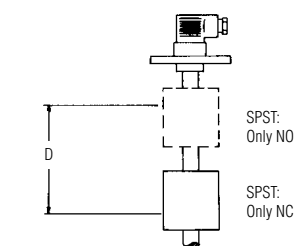
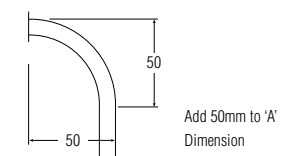
- L₀** = 800mm max.
A = min. from reference edge to highest switch point.
B = min. from stem end to lowest switch point.
C = min. between two switch points
D = min. dual action
 (One float actuates two switch points)

Stem	Brass	Stainless Steel
A	38mm	46mm
B	23mm	35mm
C	44mm	60mm
D	3mm	3mm

Reference edge (Sealing Face)



Bent Stem Option



Level dimensions (Tolerances ± 3mm) related to the mid of float.

Distance level	NO	NC	SPDT
L1 =	<input type="checkbox"/>	<input type="checkbox"/>	<input type="checkbox"/>
L2 =	<input type="checkbox"/>	<input type="checkbox"/>	<input type="checkbox"/>
L3 =	<input type="checkbox"/>	<input type="checkbox"/>	<input type="checkbox"/>
L4 =	<input type="checkbox"/>	<input type="checkbox"/>	<input type="checkbox"/>
L0 =	±2mmmax. 800 mm		

Standard Products in **bold**